

OFFICE OF STATE AID ROAD CONSTRUCTION



FISCAL YEAR 2005 ANNUAL REPORT

**OFFICE OF
STATE AID ROAD CONSTRUCTION**

MISSISSIPPI DEPARTMENT OF TRANSPORTATION
P. O. BOX 1850
JACKSON, MISSISSIPPI 39215-1850

J. Brooks Miller, Sr., P.E.
State Aid Engineer
Telephone (601) 359-7150

412 Woodrow Wilson Avenue
Jackson, MS 39216
Fax (601) 359-7141

September 20, 2005

The Honorable Haley Barbour, Governor, and
Members of the Mississippi Legislature

Gentlemen:

RE: Annual Report, Office of State Aid Road Construction
Fiscal Year July 1, 2004, thru June 30, 2005

The State Aid Engineer respectfully submits this Annual Report of the Operations of the Office of State Aid Road Construction for Fiscal Year 2005.

Included are operation summaries of the past fiscal year, together with a brief summary of the overall background and functions of the office at the state and county levels. We hope that this information will be of interest and help to the Governor and all members of the Legislature, as well as other individuals concerned with the State Aid Road Program.

During Fiscal Year 2005, the counties awarded \$105,944,641 in construction contracts. This was comprised of \$64,518,540 for State Aid (SAP) projects; \$31,688,766 for Federal Aid projects which included \$12,921,200 for twenty-one (21) Bridge Replacement (BR) projects; \$8,104,100 for Local System Bridge Program (LSBP) projects; \$948,100 for Local System Road Program (LSRP) projects and \$685,135 for Bridge Inspection (BR-NBIS) projects.

Through its improved system of roads, the State Aid Program continues to contribute to the construction and maintenance of roads and bridges in all counties of the state. Many employment opportunities are provided during the actual construction of State Aid roads.

We encourage the Legislature to conduct a thorough study of the State Aid Program so that any legislative changes made will strengthen the program and serve the long-term interests of the citizens of Mississippi.

Your recommendations and support of the State Aid Program are respectfully requested.

Respectfully submitted,



J. Brooks Miller, Sr.
State Aid Engineer

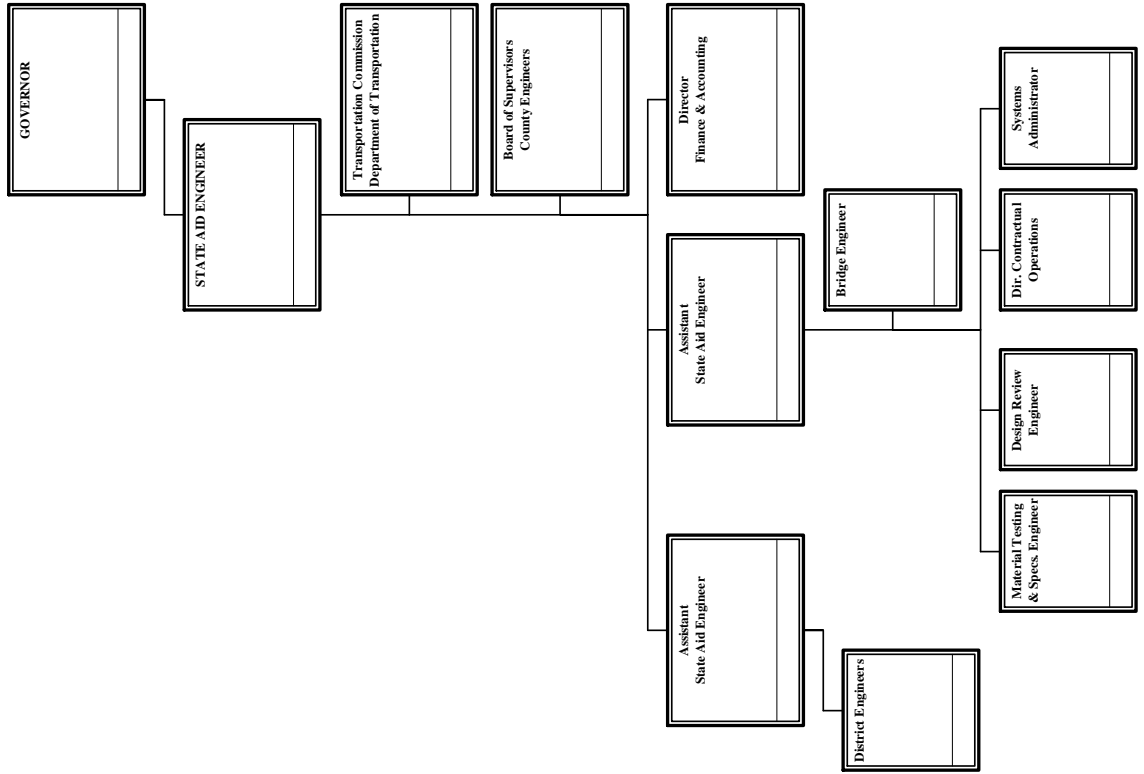
OFFICE OF STATE AID ROAD CONSTRUCTION
SUMMARY ANNUAL REPORT
FOR
THE FISCAL YEAR JULY 1, 2004, TO JUNE 30, 2005
TOGETHER WITH
A PROGRESS REPORT FROM THE BEGINNING OF THE
PROGRAM (MAY, 1950) TO JUNE 30, 2005

TABLE OF CONTENTS

	<u>Page</u>
Organizational Chart	1
State Aid Road Program:	
Background of Program	2
Organization of Program	3
Operation of Program	4
Type or Character of Construction and Reseal Programs	5
Progress of Program	6
Revenue Sources and Amounts	10
Receipts and Disbursements	11
Funding Summary	12
Summary of Administrative Expenses	13
Out-of-State Travel to Conventions and Meetings	15
Automobile Expenditures for State-Owned Vehicles	16
Improvements Let to Contract from July 1, 2004, thru June 30, 2005	17
Improvements Made on State Aid System from June, 1950, thru June 30, 2005	19
State Aid Program Construction and Engineering Disbursements from July 1, 2004, thru June 30, 2005	22
Local System Bridge Program Construction and Engineering Disbursements from July 1, 2004, thru June 30, 2005	25

**OFFICE OF STATE AID ROAD CONSTRUCTION
ORGANIZATION CHART**

Fiscal Year 2005
Annual Report



THE STATE AID ROAD PROGRAM

This report primarily summarizes the operations and progress of the State Aid Program for the fiscal year July 1, 2004, to June 30, 2005.

It is considered appropriate, however, to include an overall background of the program covering the enabling legislation, organization and functions at the State Aid Office and county levels, total funds expended, and total construction improvements accomplished.

An estimate of the program volume anticipated for the fiscal year July 1, 2005, to June 30, 2006, is also included in the report.

BACKGROUND OF PROGRAM

The State Aid Program had its beginning with the passage of Chapter 6, Laws of the Extraordinary Session of 1949 (Section 65-9-9 of the Mississippi Code of 1972). This legislation provided for the creation of a division within the State Highway Department, to be known as the Division of State Aid Road Construction, and to be charged with the responsibility of administering the program at the state level. The 1992 Legislature passed Senate Bill 2763 which created the Mississippi Department of Transportation. Under this bill the State Highway Department became known as the Department of Transportation and the Division of State Aid Road Construction became known as the Office of State Aid Road Construction.

The Enabling Act also provided for a State Aid System, to be composed of the principal collector and distributor routes in the 82 counties, connecting with the State Highway System and other principal county roads to form a network of secondary roads for the state. This system was originally limited to 11,656.4 miles, with each county allocated a percentage of this eligible mileage. The State Legislature at its 1962 Regular Session increased the eligible system mileage to 23,312.8 miles. No change was made in the allocation percentages. In 1994 under House Bill 1302 the allocation percentages were revised and the eligible mileage was increased to 25,856.2 miles. Realizing that such a large "eligible" system could not be improved with the present revenues, the State Aid Office has encouraged the counties to hold the designated mileage to a reasonable and realistic minimum. The Boards of Supervisors have cooperated accordingly and, as a result, there are only 19,021.2 miles actually designated by the Boards and approved by the State Aid Engineer as of June 30, 2005.

The 1994 Regular Session of the Legislature passed House Bill 1302 which included the establishment of a Local System Bridge Replacement and Rehabilitation Program (LSBP). The program provides funding for replacement and rehabilitation of deficient bridges maintained by counties or municipalities excluding bridges on the State Aid System, the municipal urban system or the rural major collector system. The Office of State Aid Road Construction is charged with the responsibility of administering the LSBP program under rules and regulations promulgated by the State Aid Engineer.

The 2001 Regular Session of the Legislature passed Senate Bill No. 2318 which established the Local System Road Program (LSRP). The program gives the counties the ability to use LSBP and State Aid funds (subject to certain criteria) for the construction, reconstruction and paving of county roads not on the State Aid Road System.

ORGANIZATION OF PROGRAM

Organization of the State Aid Office

The State Aid Enabling Act provides that the Office of State Aid Road Construction be directed by a State Aid Engineer, who is appointed by the Governor for terms of four years each (as amended by the Legislature in 1985). It further provides that the State Aid Engineer hire assistant engineers and other employees necessary to carry out the duties and responsibilities set out in the enabling legislation.

The actual organization of the office began with the appointment of the first State Aid Engineer on May 11, 1950. The office was authorized in 2005 to have an organization for a staff of forty-two (42) full-time employees, including fifteen (15) Registered Professional Engineers. All positions are approved by the Department of Finance and Administration and the State Personnel Board.

Organization at the County Level

Each Board of Supervisors, as the governing agency of the county, is required by statute to appoint a County Engineer, who is a Registered Professional Engineer, to act for and on behalf of the Board and to administer the engineering functions at the county level, subject to the rules and regulations promulgated by the State Aid Engineer.

There are 45 County Engineers now serving the 82 counties. Some are employed on a full-time basis, while others are generally employed on a part-time basis but devoting such time as is necessary to carry out the duties of their respective counties' State Aid Programs.

Presently, there are 22 County Engineers serving one county each; 12 serving two counties each; 9 serving three counties each; 1 serving four counties; and 1 serving five counties.

The Board is also required to appoint a Local System Bridge Engineer to administer the LSBP program at the county level. The duties of the LSBP Engineer parallel those of the County Engineer and the Board may elect to appoint the County Engineer as the LSBP Engineer. At the present time only 2 of the 82 counties have chosen to appoint an engineer other than their County Engineer to serve as their LSBP Engineer.

OPERATION OF THE PROGRAM

Operation of the Program at the County Level

It is the responsibility of the Board of Supervisors to designate the roads to be included in the county's State Aid System; adopt annual construction programs; acquire rights-of-way for State Aid projects; advertise for bids; award contracts; and maintain completed projects after construction.

The County Engineers' responsibilities and duties include, but are not limited to, the following: Assist the Boards of Supervisors in the designation and modification of their State Aid Systems; prepare annual construction programs; make surveys and prepare detailed plans and designs; make field inspections with the State Aid Engineer's representatives; prepare proposals for advertisement for bids; attend lettings at the county level; provide engineering controls (staking, etc.); supervise and inspect construction; prepare estimates for payment to the contractors; and make annual maintenance inspections of completed projects.

Operation of the Program at the State Level

It is the responsibility of the State Aid Engineer and his staff to prepare and adopt uniform design standards and specifications for the construction and maintenance of State Aid projects; approve all additions to the State Aid System; approve all construction programs, plans and specifications; authorize advertisement for bids; concur in the award of the contracts; approve and disburse all payments made from the project fund; approve the final acceptance of completed projects; and make annual and other periodic inspections of completed projects to see that they are properly maintained by the respective Boards of Supervisors.

TYPE OR CHARACTER OF CONSTRUCTION AND RESEAL PROGRAMS

Construction

During the early years of the program (the 1950's), many counties had a great need for bridges and graded roadways with a gravel surface, although many other counties began their State Aid Programs with the construction of hard-surfaced (blacktop) improvements.

It has been the objective throughout the program to construct roads that would connect with the State Highway System and other State Aid routes to form a network of secondary roads. At the present time, all programs now being approved provide for the future completion of a hard-surfaced facility.

The first hard-surfaced State Aid roads, which were completed in the beginning of the program, now need asphalt overlays. It will be noted from the summaries to follow in this report that a total of 3,035.8 miles of hot mix asphalt overlay construction (some surfaces were widened) has been accomplished. This points to the fact that the principal or arterial State Aid roads must now be upgraded to meet increasing traffic volumes and heavier loads. It is anticipated that the need for these betterments on the principal routes will continue to increase.

Maintenance and Reseal Work

The original State Aid Act did not permit the use of State Aid funds for the reseal of existing bituminous surfaces, which work consists of a light application of liquid asphalt and a light application of a fine or seal aggregate to cover the asphalt. Reseal work is regarded as maintenance. The Legislature, during its 1962 Session, amended the law to permit the use of State Aid funds (not to exceed 10%) to reseal hard-surfaced roads which had been constructed through the use of State Aid Funds. This 10% limitation was eliminated during the 1982 Legislative Session.

Bituminous surface treatments need to be resealed on an average of every five or six years to protect the surfaces and the investments made therein. A total of 27,529.8 miles have been resealed, with 1,126.1 miles of this total being contracted during the 2005 fiscal year.

The Legislature, during the 1982 Regular Session, amended Section 65-9-25 of the Mississippi Code of 1972 to permit additional State Aid funds to be used for maintenance, repair and reconstruction of State Aid roads which have been constructed in accordance with State Aid standards and specifications.

Estimated Program Volume for July 1, 2005, thru June 30, 2006

It is difficult to estimate the miles of construction and reseal improvements that will be let to contract during the coming fiscal year. However, the State Aid Road Construction Program has the potential for a \$100 to \$165 million total program for the fiscal year 2005. In addition, we expect to place under contract \$20 million in LSBP Funds.

As of June 30, 2005, programs (proposed improvements) have been adopted by the Boards of Supervisors and approved by the State Aid Engineer for the following work:

Number of Projects (Const., Reseal & Maint.)	370
Total Estimated Cost	\$199,411,786
Number of LSBP Projects	146
Total Estimated Cost	\$32,424,273
Number of LSRP Projects	6
Total Estimated Cost	\$2,484,500

The Boards of Supervisors began the new four-year term on January 1, 2004, and have available for planning and expenditure purposes 90% of the State Aid revenue that will accrue during the 2004-2007 period.

Bridge Replacement and Rehabilitation is a major Federal program that has helped the counties to improve the seriously deficient condition of many State Aid and Federal Aid System bridges. Historically, the Mississippi Department of Transportation has transferred 30% of the Bridge Replacement funds that are apportioned to the State to the State Aid program for replacement of deficient bridges on county roads. However, in FY05 only 15% or \$7,000,000 was transferred. Accurate projections of future amounts to be transferred by Mississippi Department of Transportation are unavailable at this time.

The cost per mile for the construction of projects, embracing grading, drainage structures, small bridges, base and bituminous surfacing, ranges from \$275,599 per mile to \$607,977 per mile, depending on the soil conditions, availability of construction materials and terrain. The average cost of construction projects in fiscal year 2005 was \$414,883 per mile.

Projects involving large bridges with long spans and/or projects requiring higher design standards because of heavy traffic demands or other special conditions should not be considered in these cost ranges.

Liquid seal (resealing) projects range from \$21,221 to \$38,777 per mile, depending on the location and on the leveling and base course corrections needed. The average cost of reseal projects in fiscal year 2005 was \$28,750 per mile.

PROGRESS OF PROGRAM

Projects Placed Under Contract from July 1, 2004, thru June 30, 2005

	#	Miles	Cost
Total LSBP Projects (37 Bridges Replaced)	29	5.123	8,104,100
Total LSRP (LSBP Funds)	1	2.542	831,700
Total LSRP (SA Funds)	1	3.868	116,400
Total Bridge Inspection Projects	4	0.000	685,135
Total Bridge Posting Projects	0	0.000	0
State Aid & Federal Aid Projects (excluding Bridge Inspection & Bridge Posting)			
Construction			
Grading, Drainage Structures & Paving		43.040	
Grading, Drainage Structures & Gravel Surface		3.407	
Bridges (71)		1.491	
Asphalt Overlay Construction		13.503	
Total Construction Improvements	78	<u>61.441</u>	47,175,166
Reseal & Maintenance Projects (Previously Paved State Aid Routes)	63	<u>1,126.057</u>	49,032,140
Total Construction, Reseal & Maintenance Projects	<u>141</u>		<u>96,207,306</u>

NOTE: The above totals, by Counties, are included elsewhere in this report.

Amounts and Types of Funds Contracted:

State Aid	67,963,678
County	1,423,775
Federal Funds:	
MDOT Funds	1,768,523
Surface Transportation	7,978,855
Appalachian Access	1,395,046
Bridge Replacement	12,187,466
Congestion Relief	0
Defense Access	3,080,203
Emergency Relief	0
Federal Land Highways	0
High Priority	409,760
National Corridor Planning & Development (NCPD)	0
Transportation-Community-System Preservation (TCSP)	0
Total Funds Contracted	<u>96,207,306</u>

Projects Completed and/or Placed Under Contract from Beginning of Program in June, 1950, thru June 30, 2005

	#	Miles	Cost
Total LSBP Projects (1,267 Bridges Replaced)	656	128.017	189,740,895
Total LSRP (LSBP Funds)	1	0.000	831,700
Total LSRP (SA Funds)	3	2.089	510,900
Total Bridge Inspection Projects	48	0.000	18,723,152
Total Bridge Posting Projects	6	0.000	4,056,418
State Aid & Federal Aid Projects (excluding Bridge Inspection and Bridge Posting)			
Construction			
Grading, Drainage Structures & Paving		10,886.509	
Grading, Drainage Structures & Gravel Surface		829.460	
Bridges (4,489)		106.329	
Asphalt Overlay Construction		3,035.869	
Total Construction Improvements	8,037	14,858.167	1,784,042,288
Reseal & Maintenance Projects			
(Previously Paved State Aid Routes)	1,336	27,529.846	424,576,260
Total Construction, Reseal & Maintenance Projects	9,373		2,208,618,548

OFFICE OF STATE AID ROAD CONSTRUCTION**FY 2005 ANNUAL REPORT**

NOTE: The above totals, by Counties, are included elsewhere in this report.

Projects in Contract Stage as of June 30, 2005

	#	Miles	Cost
Total LSBP Projects	45	9.519	15,944,800
Total LSRP (LSBP Funds)	1	2.542	831,700
Total LSRP (SA Funds)	3	5.957	510,900
Total Bridge Inspection Projects	2	0.000	357,815
Total Bridge Posting Projects	0	0.000	0
State Aid Projects (State Aid Funds):			
Construction	78	74.189	45,544,944
Maintenance	45	361.580	30,650,200
Reseal	33	1,358.840	37,909,500
Federal Aid Projects (State Aid , Federal & LSBP Funds):			
Surface Transportation	29	138.461	18,854,078
Appalachian Access	3	0.933	1,984,582
Bridge Replacement	63	22.698	59,065,554
Congestion Relief	0	0.000	0
Defence Access	2	9.305	3,074,681
Emergency Relief	1	0.127	488,000
High Priority	9	38.996	15,526,477
Public Land Highways	1	8.000	1,819,253
Railroad Signal	1	0.000	51,071
Total State Aid & Federal Aid Projects	265	2,013.129	214,968,340

REVENUE SOURCES AND AMOUNTS

Revenues for the State Aid Program are derived from the following state and federal sources:

State Sources:

- (a) Section 27-65-75, Mississippi Code of 1972 (as amended by the 1994 and 1999 Regular Sessions of the Legislature), provides for a minimum diversion of \$48,000,000 or 23.25%, whichever is greater, from gasoline, diesel fuel or kerosene tax revenue and \$3,000,000 from sales tax collections into the Office of State Aid Road Construction special fund in each fiscal year. Senate Bill 2010 gave the Bond Commission authority to issue \$20,000,000 in bonds for FY 2005 and \$20,000,000 in bonds for FY 2006 for the Local System Bridge Program (LSBP). In FY 2005 we received \$3,000,000 in advance against the FY 2005 future bond issue. The LSBP fund earned interest on investments in the amount of \$49,560.22 for FY 2005.
- (b) Section 65-9-17 authorizes the counties to use County funds to supplement State Aid funds for the construction of State Aid roads.

Federal Sources (Regular):

MDOT provides a portion of the Surface Transportation Program funds and Bridge Replacement funds made available to the State of Mississippi by the Federal Government to the counties through the State Aid Office.

Federal Sources (Special):

- (a) Emergency Relief funds are made available by the Federal Government to the counties through the State Aid Office on an individual project basis, to reconstruct roads and bridges on Federal Aid highways damaged or destroyed by floods, hurricanes, catastrophic failure and other disasters.
- (b) Appalachian Access Highway funds are made available to the counties in the twenty county Appalachian area in northeast Mississippi on an individual project basis. These projects are administered by the State Aid Office on an individual project basis through the Federal Highway Administration.
- (c) Other funds earmarked by Congress for selected counties.

RECEIPTS AND DISBURSEMENTS

	State Aid Road Fund	Administrative Fund	Local System Bridge Fund
BEGINNING FUNDS BALANCE 07/01/04			
Unobligated Funds	41,717,121.53	14,877.17	10,703,165.26
Project Funds	19,483,052.91	33.66	6,772,340.29
Federal Aid Matching Funds	(40,918.43)		
Total Beginning Funds Balance	61,159,256.01	14,910.83	17,475,505.55
RECEIPTS			
Gasoline Tax (Section 27-65-75)	53,354,681.12		
Sales Tax (Section 27-65-75)	3,000,000.00		
County Contributions	1,766,158.00		316,257.81
FHWA Reimbursements	18,337,382.00		
Federal Aid Matching Requirements	2,906,517.04		
Interest on Investments			49,560.22
Loan from MDB	15,000,000.00		
Transfers in	0.00	2,968,426.83	3,244,353.96
Refunds & Miscellaneous Revenue	0.00	9,191.25	
Total Receipts	94,364,738.16	2,977,618.08	3,610,171.99
TOTAL FUNDS AVAILABLE FOR EXPENDITURE	155,523,994.17	2,992,528.91	21,085,677.54
DISBURSEMENTS			
Construction Expenditures:			
State Aid Construction	58,418,900.95		8,676,608.05
Federal Aid Construction	20,728,765.89		
Debt Service Construction	14,424,313.33		
Retainage	(885,724.29)		84,449.00
MDOT Testing	357,006.36		71,220.85
Total Construction Expenditures	93,043,262.24	0.00	8,832,277.90
Other Expenditures:			
Transfers to State Highway Fund 3941	2,906,517.04		
Transfer to Administrative Fund	2,793,426.83		
Transfer to Other Funds	18,454,548.96		
Administrative Expenditures		2,969,673.02	
Loan Debt Service	1,781,905.46		
Refund to Counties & Misc. Transfers	255,656.95		235,863.00
Total Other Expenditures	26,192,055.24	2,969,673.02	235,863.00
Total Disbursements	119,235,317.48	2,969,673.02	9,068,140.90
ENDING FUND BALANCE 06/30/05			
Unobligated Funds	1,273,991.16	22,855.89	5,230,940.54
Project Funds	36,168,451.37		6,786,596.10
Federal Aid Matching Funds	(1,153,765.84)		
Total Ending Funds Balance	36,288,676.69	22,855.89	12,017,536.64
TOTAL FUNDS ACCOUNTED FOR	155,523,994.17	2,992,528.91	21,085,677.54

FUNDING SUMMARY

FUNDS MADE AVAILABLE DURING FY 2005

Sources:

Gasoline Tax (Section 27-65-75)	53,354,681	
Sales Tax	3,000,000	
Local System Bridge Funds	3,244,354	
County Contributions	2,082,416	
Interest on Investments	49,560	
Refunds and Miscellaneous Revenue	9,191	
Administrative Transfer from Counties	2,968,427	
Transfer to Budget Contingency Fund	(18,454,549)	
Federal Funds--		
FHWA Reimbursements	18,337,382	
Federal Aid Matching Requirements	2,906,517	
MDB Loan	15,000,000	
Total Federal Funds	36,243,899	
Total Fiscal Year Revenue		82,497,979
Less: Requirements for Administrative Expenses		(2,969,673)
Total Funds Made Available for Construction During FY 2005		79,528,306

PROJECTION OF REVENUE FOR FY 2006 AND FY 2007

Sources:

	<u>FY 2006</u>	<u>FY 2007</u>
Gasoline Tax (Section 27-65-75)	57,000,000	57,000,000
Sales Tax	3,000,000	3,000,000
General Funds or Bond Sales	0	20,000,000
Local System Bridge Funds	20,000,000	20,000,000
Refunds and Miscellaneous Revenue	700,000	700,000
County Contributions	2,200,000	2,200,000
Federal Aid Funds--		
Surface Transportation Program	7,700,000	7,700,000
Appalachian Access Highways	2,600,000	2,600,000
Bridge Replacement	16,000,000	16,000,000
Debt Service Loans	10,750,000	10,750,000
Priority Projects	10,950,000	10,950,000
Total Fiscal Year Revenue	130,900,000	150,900,000
Less: Requirements for Administrative Expenses	(3,018,224)	(3,018,224)
Total Revenue Available for Construction	127,881,776	147,881,776

SUMMARY OF ADMINISTRATIVE EXPENSES**Salaries, Wages and Fringe Benefits:**

Employer's Contributions:		
Salaries and Wages	1,874,950.18	
Personal Leave Pay	12,198.07	
Retirement Matching	183,997.04	
Social Security Matching	137,315.56	
Workers' Compensation	10,827.00	
Group Health Insurance	143,685.00	
Group Life Insurance	4,457.70	
Unemployment Insurance Tax	3,255.00	
Cafeteria Plan	2,327.50	\$ 2,373,013.05

Travel:

In-State	32,648.87	
Out-of-State	11,938.37	44,587.24

Contractual Services:

Tuition	3,142.00	
Employee Training	15,442.05	
Travel Related Registration	3,685.00	
Postage	20,080.00	
Freight	1,137.18	
Public Information	70.00	
Rental of Office Equipment	17,646.15	
Repair/Service Passenger Vehicle	1,643.65	
Repair/Service Office Equipment	12,375.04	
Fees and Professional Services--		
SAAS	5,180.23	
MMRS	7,835.76	
Audit Department	27,015.91	
State Personnel Board	6,160.00	
Personal Service Contracts	94,779.35	
Recording & Notary Fees	232.00	
Contract Payroll Taxes Matching	7,132.25	
SPAHRs Refunds of Deductions	19.07	
Other	51,540.00	
Tort Claims Board Assessment	29,589.65	
Insurance and Fidelity Bonds	938.00	
Insurance Computer Equipment	1,144.00	
Membership Dues	370.00	
ITS Fees	3,570.00	
ITS Training/Education	1,065.00	
Service Fees to State Computer Center	13,109.12	
Software Acquisition	26,902.62	

SUMMARY OF ADMINISTRATIVE EXPENSES

Telephone--		
Monthly Fee	14,567.00	
Long Distance	1,540.08	
Usage Time Cellular Telephones	3,262.11	
Maintenance/Repair of IS Equipment	2,146.25	
Maintenance/Repair Telephone System	908.50	
Prior Year Expense	1,030.23	375,258.20
Commodities:		
Printing and Binding	1,797.35	
Duplication Supplies	3,008.22	
Office Supplies and Materials	4,921.56	
Paper Supplies	1,844.80	
Maps and Manuals	980.53	
Office Equipment	5,538.76	
Other Supplies and Materials--		
Fuels Gasoline	21,105.21	
Fuel Card - Oils, Greases, Etc.	4,327.44	
Tires and Tubes - Auto	1,321.95	
Other Equipment Repair	5,757.01	
Engineering Supplies	648.56	
Repair Parts	36.91	
Decals Signs Other than Road Construction	169.20	
Informaiton System Equipment Repairs	2,232.02	
Other Supplies and Materials	979.85	
Other Equipment	1,031.09	55,700.46
Capital Outlay:		
Automobiles	68,872.00	
Office Machines, Furniture & Fixtures	3,077.34	
Photo and Reproduciton Equipment	1,305.00	
Mainframe Systems Equipment	47,205.40	
Other Equipment	649.00	121,108.74
Total		\$ 2,969,667.69

OUT-OF-STATE TRAVEL TO CONVENTIONS AND MEETINGS

Employee's Name	Destination	Purpose	Total Cost	Date
J. Brooks Miller	Norfolk, VA	Airline Ticket	258.90	Jul-04
J. Brooks Miller	Phoeniz, AZ	Learn nationwide policies & procedures	784.85	Jul-04
J. Brooks Miller	Phoeniz, AZ	Airline Ticket	420.40	Jul-04
J. Brooks Miller	Norfolk, VA	Learn nationwide policies & procedures	829.52	Aug-04
Bill Norton	Nashville, TN	Learn trends on roadway construction	1,605.01	Aug-04
Darrel Broom	Little Rock, AR	Study GPS potential for State Aid	310.86	Sep-04
Darrel Broom	Norfolk, VA	Learn nationwide policies & procedures	1,774.41	Sep-04
Martha Ludke	San Diego, CA	EEO and Title VII Training-Civil Rights	993.18	Sep-04
Martha Ludke	San Diego, CA	Airline Ticket	384.40	Sep-04
Sandra Mohr	San Diego, CA	EEO and Title VII Training-Civil Rights	1,068.95	Sep-04
Sandra Mohr	San Diego, CA	Airline Ticket	384.40	Sep-04
Paul Rigby	Nashville, TN	Improve efficiency in federal funds mgm	864.31	Apr-05
H. Carey Webb	Birmingham, AL	Learn new specs for highway bridges	84.45	Apr-05
Dan Jordan	Nashville, TN	Improve efficiency in federal funds mgm	397.43	May-05
Dan Jordan	Nashville, TN	Airline Ticket	399.30	May-05
Freddy Hollis	Pittsburgh, PA	Learn bridge design & maintenance methods	728.95	Jun-05
J. Brooks Miller	Nashville, TN	Learn successful consultation process	649.05	Jun-05
Grand Total			\$11,938.37	

AUTOMOBILE EXPENDITURES FOR STATE-OWNED VEHICLES

Make/Model	Unit #	Year	Cost	Cost of Use Estimate	Operating Expense	Total Expense	Miles Traveled	Cost Per Mile
Jeep Cherokee	V118	1999	16,536	1,687.21	2,330.98	4,018.19	21,454	.1873
Chevrolet Lumina	V119	2000	13,727	2,913.81	2,164.59	5,078.40	37,051	.1371
Chevrolet Lumina	V120	2000	13,727	1,179.18	1,608.35	2,787.53	14,994	.1859
Chevrolet Lumina	V121	2000	13,727	1,860.46	1,879.21	3,739.67	23,657	.1581
Chevrolet Lumina	V122	2000	13,727	2,075.95	1,933.86	4,009.81	26,397	.1519
Ford/Crown Victoria	V123	2001	19,166	1,902.70	2,010.16	3,912.86	24,194	.1617
Ford/Crown Victoria	V124	2001	19,166	1,423.44	2,172.16	3,595.60	18,100	.1987
Ford/Taurus	V125	2004	11,893	3,307.97	3,978.85	7,286.82	42,063	.1732
Ford/Taurus	V126	2004	11,893	3,144.47	2,747.25	5,891.72	39,984	.1474
Ford/Taurus	V127	2004	11,863	2,787.35	3,158.95	5,946.30	35,443	.1678
Ford/Crown Victoria	V128	2004	19,786	1,780.56	1,804.70	3,585.26	22,641	.1584
Ford/Taurus	V129	2005	12,396		561.45	561.45	7,042	.0797
Ford/Taurus	V130	2005	12,396		673.34	673.34	9,273	.0726
Ford/Taurus	V131	2005	12,396		463.04	463.04	6,687	.0692
Ford/Taurus	V132	2005	12,396		592.55	592.55	6,811	.0870
Ford/Crown Victoria	V133	2005	19,288		318.81	318.81	4,263	.0748

IMPROVEMENTS LETS TO CONTRACT FROM JULY 1, 2004, THRU JUNE 30, 2005

County	Construction Miles and Cost						Reseal & Maintenance		
	Surfacing	Grading & Gravel	Bridges		Resurfacing	Total Miles	Cost	Miles	Cost
			#	Miles					
Adams	-	-	-	-	-	-	-	-	0
Alcorn	0.228	0.210	2	0.048	-	0.486	1,134,500	3.028	230,900
Amite	-	-	-	-	-	-	-	47.173	1,319,600
Attala	0.125	0.292	3	0.016	-	0.433	703,000	-	0
Benton	-	-	-	-	-	-	-	1.339	259,900
Bolivar	0.638	-	6	0.054	-	0.692	1,913,000	32.710	1,268,400
Calhoun	0.456	-	3	0.053	-	0.509	1,157,000	21.980	369,800
Carroll	-	-	-	-	-	-	-	53.651	1,590,200
Chickasaw	-	0.168	1	0.017	-	0.185	212,200	52.907	1,236,000
Choctaw	-	-	-	-	-	-	-	31.358	1,138,000
Claiborne	0.671	-	1	0.013	-	0.684	1,091,000	-	0
Clarke	-	-	1	0.016	-	0.016	-	0.037	134,500
Clay	-	0.404	2	0.020	-	0.424	641,700	6.802	1,074,700
Coahoma	-	-	-	-	-	-	-	1.893	155,800
Copiah	4.615	-	-	-	-	4.615	2,199,400	24.915	1,606,700
Covington	0.514	-	3	0.107	-	0.621	1,581,900	-	0
DeSoto	0.833	-	-	-	3.359	4.192	686,000	9.485	1,333,100
Forrest	-	-	-	-	-	-	-	9.745	740,400
Franklin	-	-	-	-	-	-	-	68.244	1,388,100
George	-	-	-	-	-	-	-	33.125	1,691,300
Greene	0.729	-	-	-	-	0.729	132,500	16.072	1,146,500
Grenada	9.282	-	1	0.023	-	9.305	3,263,767	-	0
Hancock	0.347	-	2	0.035	2.800	3.182	858,800	10.405	1,800,600
Harrison	-	-	-	-	-	-	-	37.260	3,193,800
Hinds	-	-	-	-	-	-	-	-	0
Holmes	-	0.294	1	0.023	-	0.317	415,300	-	0
Humphreys	-	-	-	-	-	-	-	-	0
Issaquena	-	-	-	-	-	-	-	17.151	655,200
Itawamba	-	-	-	-	-	-	-	7.718	608,600
Jackson	2.119	-	1	0.060	-	2.179	4,588,200	-	0
Jasper	0.895	-	4	0.141	-	1.036	2,725,500	-	0
Jefferson	-	-	-	-	-	-	-	-	0
Jefferson Davis	-	-	-	-	-	-	-	0.508	667,200
Jones	0.531	-	3	0.060	-	0.591	975,700	-	0
Kemper	0.121	-	1	0.007	-	0.128	282,700	0.037	141,700
Lafayette	0.212	-	2	0.049	-	0.261	583,100	-	0
Lamar	0.077	-	1	0.036	-	0.113	357,400	43.521	1,116,000
Lauderdale	0.133	-	1	0.023	-	0.156	347,900	85.459	2,163,200
Lawrence	-	-	-	-	-	-	-	35.707	881,100
Leake	3.995	-	1	0.006	-	4.001	1,039,400	-	0
Lee	0.340	-	4	0.066	-	0.406	1,409,600	2.327	188,900
Leflore	-	-	-	-	-	-	332,100	4.397	0
Lincoln	0.284	-	-	-	-	0.284	222,000	-	0
Lowndes	0.369	-	2	0.027	-	0.396	1,112,300	24.322	1,671,400
Madison	-	-	-	-	-	-	-	45.409	953,400

IMPROVEMENTS LETS TO CONTRACT FROM JULY 1, 2004, THRU JUNE 30, 2005

County	Construction Miles and Cost						Reseal & Maintenance		
	Surfacing	Grading & Gravel	Bridges		Resur-facing	Total Miles	Cost	Miles	Cost
			#	Miles					
Marion	-	-	-	-	-	-	-	84.824	1,419,800
Marshall	3.343	-	6	0.164	4.491	7.998	5,346,699	8.730	238,200
Monroe	-	-	-	-	-	-	-	45.618	2,157,000
Montgomery	-	0.355	3	0.040	-	0.395	889,800	19.704	529,400
Neshoba	-	-	-	-	-	-	-	-	0
Newton	-	-	1	0.004	2.853	2.857	890,700	-	0
Noxubee	1.921	-	-	-	-	1.921	450,900	-	0
Oktibbeha	-	-	-	-	-	-	-	-	0
Panola	-	-	-	-	-	-	-	-	0
Pearl River	0.189	-	1	0.037	-	0.226	464,900	20.645	1,293,640
Perry	0.711	-	4	0.043	-	0.754	1,150,100	-	2,652,000
Pike	-	-	-	-	-	-	-	80.490	0
Pontotoc	2.224	-	-	-	-	2.224	776,300	36.298	1,941,500
Prentiss	-	-	-	-	-	-	-	12.561	384,000
Quitman	-	-	-	-	-	-	136,100	0.008	0
Rankin	0.769	-	1	0.049	-	0.818	864,000	-	0
Scott	-	-	-	-	-	-	-	-	0
Sharkey	0.433	-	2	0.047	-	0.480	1,108,700	17.089	953,400
Simpson	0.437	-	1	0.029	-	0.466	564,200	8.104	711,000
Smith	0.425	-	2	0.102	-	0.527	253,200	-	0
Stone	-	-	-	-	-	-	-	-	0
Sunflower	-	-	-	-	-	-	-	-	0
Tallahatchie	0.067	1.609	1	0.024	-	1.700	891,100	-	0
Tate	0.364	-	1	0.005	-	0.369	394,900	-	0
Tippah	-	-	-	-	-	-	-	0.033	150,000
Tishomingo	-	-	-	-	-	-	27,400	10.970	866,700
Tunica	-	-	-	-	-	-	-	13.709	0
Union	-	-	-	-	-	-	-	-	0
Walthall	0.608	0.075	1	0.006	-	0.689	684,200	0.123	1,975,800
Warren	1.297	-	-	-	-	1.297	1,004,100	-	0
Washington	-	-	-	-	-	-	-	-	0
Wayne	1.559	-	-	-	-	1.559	155,000	3.038	451,600
Webster	-	-	-	-	-	-	-	-	0
Wilkinson	1.003	-	-	-	-	1.003	493,300	-	0
Winston	-	-	-	-	-	-	-	0.132	110,400
Yalobusha	0.176	-	1	0.041	-	0.217	663,600	19.870	688,800
Yazoo	-	-	-	-	-	-	-	15.426	1,783,900
Totals	43.040	3.407	71	1.491	13.503	61.441	47,175,166	1,126.057	49,032,140

OFFICE OF STATE AID ROAD CONSTRUCTION

FY 2005 ANNUAL REPORT

IMPROVEMENTS MADE ON THE STATE AID SYSTEM FROM JUNE 30, 1950, THRU JUNE 20, 2005

County	State Aid Mileage			State Aid Improvements										Funds Expended or Obligated To Contact	
	Total Allocation	Actually Designated	Paved Mileage	Grading & Grav. Surf.	Brs. Structural		Total Actual Miles	Overlay or Resurf.	Total Construction	Surfacing Reseal/Maint.	Construction	Reseal/Maint.			
					#	Miles									
Adams	249.5	190.600	46.748	0.742	16	0.585	48.075	37.642	85.717	97.357	17,457,565	1,901,456			
Alcorn	307.7	178.200	112.200	1.788	48	0.957	114.945	27.107	142.052	257.954	20,470,932	4,019,421			
Amite	398.7	258.950	189.505	3.889	51	1.339	194.733	55.216	249.949	584.328	25,697,863	7,781,343			
Attala	345.0	250.850	139.654	8.707	58	1.496	149.857	-	149.857	517.495	22,237,886	5,215,688			
Benton	198.2	174.300	101.041	9.564	32	0.609	111.214	-	111.214	146.142	13,303,867	2,019,998			
Bolivar	326.4	202.700	98.415	7.117	46	0.874	106.406	80.137	186.543	207.487	22,179,984	4,800,249			
Calhoun	321.7	237.900	128.089	15.738	83	1.513	145.340	47.753	193.093	448.680	20,556,242	5,591,424			
Carroll	300.7	214.100	109.366	13.025	64	1.371	123.762	46.056	169.818	300.827	20,454,773	5,515,212			
Chickasaw	237.8	195.880	103.351	15.353	65	1.317	120.021	0.463	120.484	290.418	17,071,720	3,578,367			
Choctaw	228.5	199.700	111.061	30.263	77	1.319	142.643	0.225	142.868	327.534	15,966,905	5,970,129			
Claiborne	240.1	154.500	92.636	10.000	25	1.202	103.838	86.751	190.589	168.005	21,095,872	4,348,371			
Clarke	370.7	291.000	205.656	0.862	52	1.446	207.964	32.970	240.934	527.879	22,993,409	7,294,558			
Clay	240.1	168.000	96.935	9.725	63	1.499	108.159	27.903	136.062	277.944	28,634,287	5,279,224			
Coahoma	340.4	216.100	150.113	1.345	26	0.763	152.221	260.262	312.483	337.513	22,161,913	4,053,884			
Copiah	442.9	385.700	240.226	4.415	105	2.637	247.278	23.305	270.583	645.405	38,061,196	6,291,475			
Covington	270.4	223.800	145.565	2.344	72	2.311	150.220	9.994	160.214	544.669	18,616,639	5,817,550			
DeSoto	408.0	193.400	108.691	20.603	51	1.054	130.348	22.452	152.800	154.185	20,101,425	5,339,329			
Forrest	296.1	260.600	63.656	5.608	70	2.105	71.369	63.902	135.271	294.555	22,525,524	5,655,605			
Franklin	398.7	225.880	154.972	0.980	39	1.596	157.548	37.215	194.763	412.054	25,788,662	6,754,754			
George	256.4	177.300	123.878	5.210	46	1.109	130.197	11.302	141.499	293.555	17,605,050	5,444,902			
Greene	412.6	290.200	207.278	9.549	90	2.087	218.914	39.261	258.175	424.176	36,603,015	3,924,080			
Grenada	226.1	156.200	101.101	1.914	31	0.740	103.755	25.741	129.496	357.026	29,476,600	4,345,114			
Hancock	251.8	163.200	83.626	10.139	36	0.645	94.410	23.201	117.611	183.347	15,854,853	4,879,716			
Harrison	396.3	267.700	140.997	1.871	53	2.009	144.877	22.187	167.064	381.071	31,769,571	7,508,310			
Hinds	431.3	368.300	247.522	1.504	36	1.284	250.310	82.688	332.998	198.859	27,397,420	4,890,129			
Holmes	445.3	322.400	218.708	18.381	60	1.410	238.499	66.023	304.522	661.811	27,780,472	7,059,817			
Humphreys	216.8	204.900	111.017	16.225	32	0.576	127.818	7.143	134.961	217.800	13,150,297	3,942,269			
Issaquena	135.2	91.100	36.131	21.852	7	0.161	58.144	28.007	86.151	100.074	6,843,275	2,839,707			
Itawamba	317.1	222.350	160.724	6.298	77	1.665	168.687	13.439	182.126	314.273	23,877,398	5,515,368			
Jackson	361.4	146.300	60.149	6.723	28	1.517	68.389	7.893	76.282	87.990	20,232,985	5,099,211			
Jasper	307.7	291.400	172.101	4.278	71	1.765	178.144	26.025	204.169	387.136	24,174,755	5,182,250			
Jefferson	221.5	160.300	74.520	6.345	43	1.041	81.906	21.256	103.162	230.461	14,539,978	3,026,877			

OFFICE OF STATE AID ROAD CONSTRUCTION

FY 2005 ANNUAL REPORT

IMPROVEMENTS MADE ON THE STATE AID SYSTEM FROM JUNE 30, 1950, THRU JUNE 20, 2005

County	State Aid Mileage			State Aid Improvements										Funds Expended or Obligated To Contact	
	Total Allocation	Actually Designated	Paved Mileage	Grading & Grav. Surf.	Brs. Structural		Total Actual Miles	Overlay or Resurf.	Total Construction	Surfacing Reseal/Maint.	Construction	Reseal/Maint.			
					#	Miles									
Jefferson Dav	268.1	188.800	112.775	3.829	54	1.233	117.837	45.476	163.313	359.894	14,875,445	7,070,408			
Jones	503.6	329.300	179.037	30.507	76	2.258	211.802	49.439	261.241	514.557	30,775,576	7,096,065			
Kemper	382.3	288.350	205.216	34.444	84	1.496	241.156	29.968	271.124	360.768	27,656,316	4,945,795			
Lafayette	326.4	184.700	107.014	8.410	94	1.850	117.274	28.876	146.150	321.648	21,399,718	3,960,153			
Lamar	307.7	207.780	107.300	1.474	50	1.506	110.280	87.450	197.730	472.198	17,557,468	6,484,236			
Lauderdale	419.6	414.200	249.607	1.619	62	1.314	252.540	96.368	348.908	461.226	23,964,369	8,439,996			
Lawrence	261.1	212.820	120.260	8.177	58	1.407	129.844	65.999	195.843	399.586	24,998,505	5,699,412			
Leake	291.4	223.330	146.788	11.073	60	1.455	159.316	15.997	175.313	290.129	25,715,657	3,563,469			
Lee	361.4	194.400	107.020	17.876	68	1.258	126.154	19.648	145.802	288.339	24,933,874	6,487,105			
Leflore	300.7	275.900	134.409	5.456	59	2.585	142.450	6.988	149.438	522.060	23,419,489	7,691,670			
Lincoln	433.6	360.200	195.090	4.187	68	1.825	201.102	31.596	232.698	501.465	34,920,778	6,596,852			
Lowndes	384.7	189.000	111.944	6.966	59	1.272	120.182	116.778	236.960	290.509	26,485,086	5,442,948			
Madison	345.0	285.300	154.445	3.352	55	1.353	159.150	52.124	211.274	421.207	25,460,644	4,383,339			
Marion	321.7	286.100	183.222	3.838	61	1.181	188.241	92.845	281.086	546.836	18,254,900	7,726,570			
Marshall	335.7	211.000	114.100	8.431	39	1.361	123.892	6.191	130.083	172.532	22,097,281	2,512,361			
Monroe	347.4	203.700	141.206	7.454	44	0.895	149.555	26.800	176.355	356.798	20,711,268	5,841,223			
Montgomery	251.8	209.450	89.916	24.223	80	1.509	115.648	7.047	122.695	275.509	18,822,037	5,025,654			
Neshoba	377.7	312.200	179.976	34.354	87	1.514	215.844	9.884	225.728	344.112	27,130,247	3,987,792			
Newton	284.4	273.000	166.748	6.404	64	0.952	174.104	12.234	186.338	268.930	19,813,212	3,529,848			
Noxubee	317.1	222.000	127.970	6.353	55	1.088	135.411	19.013	154.424	332.594	21,803,129	4,255,593			
Oktibbeha	300.7	202.400	130.717	10.148	18	0.316	141.181	21.228	162.409	408.148	14,866,889	4,191,797			
Panola	361.4	250.400	157.260	6.412	53	1.116	164.788	107.062	271.850	412.390	27,012,743	3,963,110			
Pearl River	382.3	239.600	145.843	14.277	58	1.724	161.844	39.014	200.858	533.622	20,174,715	7,488,520			
Perry	286.8	223.800	92.351	6.040	62	1.496	99.887	32.700	132.587	366.290	19,009,799	4,723,406			
Pike	333.4	257.100	129.346	15.350	54	1.212	145.908	7.637	153.545	447.221	17,498,910	8,297,238			
Pontotoc	279.8	180.090	98.043	9.879	23	0.540	108.462	4.712	113.174	229.088	13,783,226	5,514,826			
Prentiss	268.1	198.520	121.782	20.222	65	1.280	143.284	22.492	165.776	235.891	20,664,081	4,575,753			
Quitman	219.1	184.600	86.054	6.238	49	1.346	93.638	21.750	115.388	114.445	14,914,593	1,784,694			
Rankin	524.5	270.200	136.146	10.242	81	1.514	147.902	92.167	240.069	266.219	39,484,283	5,698,863			
Scott	289.1	223.300	135.192	15.120	80	1.162	151.474	11.786	163.260	321.974	18,051,309	5,410,423			
Sharkey	174.9	111.600	73.556	14.392	15	0.468	88.416	36.992	125.408	161.739	10,504,286	4,202,596			
Simpson	328.7	286.750	170.908	3.872	75	1.828	176.608	20.196	196.804	485.466	23,647,708	5,171,473			

OFFICE OF STATE AID ROAD CONSTRUCTION

FY 2005 ANNUAL REPORT

IMPROVEMENTS MADE ON THE STATE AID SYSTEM FROM JUNE 30, 1950, THRU JUNE 20, 2005

County	State Aid Mileage		State Aid Improvements										Funds Expended or Obligated To Contact	
	Total Allocation	Actually Designated	Paved Mileage	Grading & Grav. Surf.	Brs. Structural		Total Actual Miles	Overlay or Resurf.	Total Construction	Surfacing Reseal/Maint.	Construction	Reseal/Maint.		
					#	Miles								
Smith	321.7	260.000	181.912	10.627	64	1.721	194.260	10.445	204.705	473.303	25,023,889	5,714,492		
Stone	202.8	181.900	125.032	2.088	29	0.584	127.704	43.593	171.297	295.569	13,225,604	3,445,860		
Sunflower	412.6	249.800	137.842	19.202	51	1.560	158.604	55.264	213.868	212.022	28,664,965	3,617,058		
Tallahatchie	296.1	289.400	140.561	21.601	38	1.221	163.383	23.341	186.724	419.578	18,716,594	5,892,835		
Tate	265.8	164.800	50.944	17.418	58	1.674	70.036	22.070	92.106	148.658	17,035,317	3,245,396		
Tippah	289.1	217.300	136.737	13.654	50	0.789	151.180	9.196	160.376	209.881	20,021,907	3,270,569		
Tishomingo	263.4	200.100	122.432	4.107	53	1.153	127.692	62.973	190.665	140.497	21,158,503	4,833,622		
Tunica	242.5	204.200	139.189	12.521	78	0.582	152.292	92.584	244.876	194.350	17,611,287	4,190,678		
Union	270.4	188.100	106.778	15.952	42	0.908	123.638	17.358	140.996	170.001	22,559,962	3,908,285		
Walthall	277.4	218.910	126.857	3.129	68	1.325	131.311	28.163	159.474	479.472	16,763,134	7,808,161		
Warren	347.4	193.200	68.916	8.015	29	0.762	77.693	47.143	124.836	198.998	19,791,966	3,199,756		
Washington	377.7	359.500	77.808	0.499	54	1.688	79.995	71.274	151.269	105.026	29,893,562	5,423,281		
Wayne	410.3	372.100	221.180	11.439	70	1.736	234.355	8.297	242.652	632.384	24,979,986	9,772,871		
Webster	277.4	212.900	106.694	7.263	74	1.183	115.140	5.187	120.327	514.054	16,147,093	7,212,645		
Wilkinson	223.8	152.900	93.687	1.636	29	0.819	96.142	39.793	135.935	240.880	15,353,719	3,723,672		
Winston	291.4	277.950	192.736	34.845	61	1.118	228.699	23.093	251.792	264.977	24,017,046	2,902,292		
Yalobusha	214.5	176.700	98.925	1.284	42	0.775	100.984	-	100.984	464.663	13,621,003	5,314,990		
Yazoo	401.0	317.800	211.406	11.204	36	1.415	224.025	104.119	328.144	504.133	24,366,878	8,450,818		
Totals	25,856.2	19,021.260	10,886.509	829.460	4,489	106.329	11,822.298	3,035.869	14,858.167	27,529.846	1,784,042,288	424,576,260		

STATE AID PROGRAM CONSTRUCTION AND ENGINEERING DISBURSEMENTS BY COUNTY AND SYSTEM FROM JULY 1, 2004, THRU JUNE 30, 2005

COUNTY	RR CROSSING RRS/STP-C & RR SIGNAL RRP/STP-S	MIDOT HIGH PRIORITY MS	RURAL SECONDARY GRADE RSG/STPG	ACCESS HIGHWAY LAKES AHL	34	36	PUBLIC LAND HIGHWAYS PLH	62	DEFENSE ACCESS AGMC	64	EMERGENCY RELIEF	66	CONGESTION RELIEF	68	LOCAL SYSTEM ROAD PROJECTS	80	STATE AID PROJECTS SAP	81	SURFACE TRANSPORTATION RURAL COUNTIES STP	82 & 46	BRIDGE REPLACE BR	85
Adams		19	32	34	36	62	64	66	68	80	81	82 & 46	85				860,539.89					892,049
Alcorn					25,601.27						236,179.43							394,245.12				29,853
Amite											1,139,313.77							428,766.89				461,176
Attala											875.00							223,648.56				602,823
Benton											68,770.87							759,608.79				354,186
Bolivar											1,284,556.71							106,751.69				185,294
Calhoun											1,325,852.71							790,559.83				800,148
Carroll											46,689.61							610,452.94				200,613
Chickasaw					199,094.99						772,696.35							1,618,066.29				42,714
Choctaw											307,265.94							84,666.07				890,405
Claiborne											1,809,292.86							45,212.96				1,443,112
Clarke											594,172.03							1,168,212				
Clay											1,604,125.48							612,186.85				
Coahoma											29,884.10							333,335.36				193,776
Copiah											852,925.53							4,729.70				6,022
Covington											859,828.31							425,391.55				3,523,366
DeSoto											1,028,548.82							281,598.88				
Forrest											148,314.02							183,556.36				150,714
Franklin											89,638.00							521,786.27				
George											58,418.80							148,314.02				36,985.48
Greene											26,878.17							183,556.36				
Grenada											709,978.19							521,786.27				
Hancock											58,418.80							148,314.02				150,714
Harrison											26,878.17							183,556.36				
Hinds											709,978.19							521,786.27				
Holmes											58,418.80							148,314.02				36,985.48
Humphreys											26,878.17							183,556.36				
Issaquena											709,978.19							521,786.27				
Itawamba											58,418.80							148,314.02				178,736
Jackson											26,878.17							183,556.36				418,144
Jasper											709,978.19							521,786.27				468,428
Jefferson											58,418.80							148,314.02				711,747
Jeff Davis											209,125.81							646,598.83				15,825
Jones											1,549,603.93							18,734.60				
Kemper											1,549,603.93							142,028.74				1,037,915
Lafayette											1,716,873.84							172,874.96				
Lamar											456,355.22							394,108.46				45,695
Lauderdale											1,890,810.35							73,874.95				65,322

OFFICE OF STATE AID ROAD CONSTRUCTION

FY 2005

STATE AID PROGRAM CONSTRUCTION AND ENGINEERING DISBURSEMENTS BY COUNTY AND SYSTEM FROM JULY 1, 2004, THRU JUNE 30, 2005

COUNTY	RR CROSSING RRS/STP-C RRP/STP-S	MIDOT HIGH PRIORITY MS	RURAL SECONDARY GRADE RSG/STPG	ACCESS HIGHWAY LAKES AHL	34	36	APPALACHIAN ACCESS HIGHWAY APL	PUBLIC LAND HIGHWAYS PLH	62	64	66	68	80	81	STATE AID PROJECTS SAP	SURFACE TRANSPORTATION RURAL COUNTIES STP	82 & 46	BRIDGE REPLACEMENT BR	85
Wayne	01 & 02	19	32	34	36	62	64	66	68	80	81	666,838.47	10,143.40	1,167,490.31	10,143.40	315,901			
Webster														7,348.88	416,250.17	365,687			
Wilkinson						31,533.84								463,834.78		538,115			
Winston														728,069.49	18,382.88	76,068			
Yalobusha														1,229,113.51	1,820.40				
Yazoo														10,818.59					
Service Center *																			314,353
Statewide **																			
TOTALS BY	0.00	4,343,894.39	128,281.01	0.00	1,253,355.46	126,562.22	425,391.55	221,423.46	0.00	114,053.93	55,920,197.84	4,648,140.21							25,861,962

* System 81, Testing Charges paid to Calvert on SAP 99 99 and to Simmons on SAP 99 100

** System 82, Wetland Mitigation; System 85, Bridge Inspection and Bridge Posting Projects

**LOCAL SYSTEM BRIDGE PROGRAM CONSTRUCTION AND ENGINEERING DISBURSEMENTS
BY COUNTY AND SYSTEM FROM JULY 1, 2004, THRU JUNE 20, 2005**

COUNTY	LOCAL SYSTEM ROAD PROJECTS	LOCAL SYSTEM BRIDGE PROJECTS	TOTALS BY COUNTY
	80	81	
Adams			0.00
Alcorn		52,432.12	52,432.12
Amite		77,998.76	77,998.76
Attala		243,595.65	243,595.65
Benton		10,808.59	10,808.59
Bolivar		348,707.31	348,707.31
Calhoun		297,791.99	297,791.99
Carroll		19,848.25	19,848.25
Chickasaw		81,547.92	81,547.92
Choctaw			0.00
Claiborne		41,729.64	41,729.64
Clarke		8,659.77	8,659.77
Clay		43,678.04	43,678.04
Coahoma		16,133.69	16,133.69
Copiah		136,973.97	136,973.97
Covington		159,703.48	159,703.48
DeSoto		165,273.83	165,273.83
Forrest		239,486.80	239,486.80
Franklin		378,915.76	378,915.76
George		141,523.16	141,523.16
Greene			0.00
Grenada	196,614.44		196,614.44
Hancock			0.00
Harrison			0.00
Hinds		19,792.40	19,792.40
Holmes		215,201.27	215,201.27
Humphreys		558,042.96	558,042.96
Issaquena			0.00
Itawamba		20,668.32	20,668.32
Jackson		11,381.90	11,381.90
Jasper		215,154.59	215,154.59
Jefferson			0.00
Jeff Davis			0.00
Jones		5,304.60	5,304.60
Kemper		23,617.94	23,617.94
Lafayette		138,880.04	138,880.04
Lamar		75,620.96	75,620.96
Lauderdale		21,441.30	21,441.30
Lawrence		101,533.02	101,533.02
Leake		86,995.55	86,995.55
Lee		139,899.29	139,899.29

**LOCAL SYSTEM BRIDGE PROGRAM CONSTRUCTION AND ENGINEERING DISBURSEMENTS
BY COUNTY AND SYSTEM FROM JULY 1, 2004, THRU JUNE 20, 2005**

COUNTY	LOCAL SYSTEM ROAD PROJECTS	LOCAL SYSTEM BRIDGE PROJECTS	TOTALS BY COUNTY
	80	81	
Leflore			0.00
Lincoln		12,682.92	12,682.92
Lowndes		281,100.53	281,100.53
Madison			0.00
Marion		231,446.08	231,446.08
Marshall		72,250.78	72,250.78
Monroe			0.00
Montgomery		24,126.48	24,126.48
Neshoba			0.00
Newton		1,860.10	1,860.10
Noxubee		137,361.94	137,361.94
Oktibbeha			0.00
Panola		532,283.35	532,283.35
Pearl River		199,066.71	199,066.71
Perry		144,642.09	144,642.09
Pike		185,308.60	185,308.60
Pontotoc		12,665.05	12,665.05
Prentiss		94,438.96	94,438.96
Quitman		11,365.85	11,365.85
Rankin		328,071.06	328,071.06
Scott		65,997.81	65,997.81
Sharkey			0.00
Simpson		27,187.84	27,187.84
Smith		16,524.59	16,524.59
Stone		110,421.74	110,421.74
Sunflower		14,854.31	14,854.31
Tallahatchie			0.00
Tate		20,492.41	20,492.41
Tippah		208,469.91	208,469.91
Tishomingo		20,392.99	20,392.99
Tunica			0.00
Union		11,273.40	11,273.40
Walthall			0.00
Warren		268,255.25	268,255.25
Washington		454,568.34	454,568.34
Wayne		27,666.82	27,666.82
Webster			0.00
Wilkinson		9,082.44	9,082.44
Winston		531,696.24	531,696.24
Yalabusha			0.00
Yazoo		481,766.00	481,766.00
TOTALS BY SYS	196,614.44	8,635,663.46	8,832,277.90

This page intentionally left blank.