

**OFFICE OF STATE AID  
ROAD CONSTRUCTION**



**Annual Report  
Fiscal Year 2010**



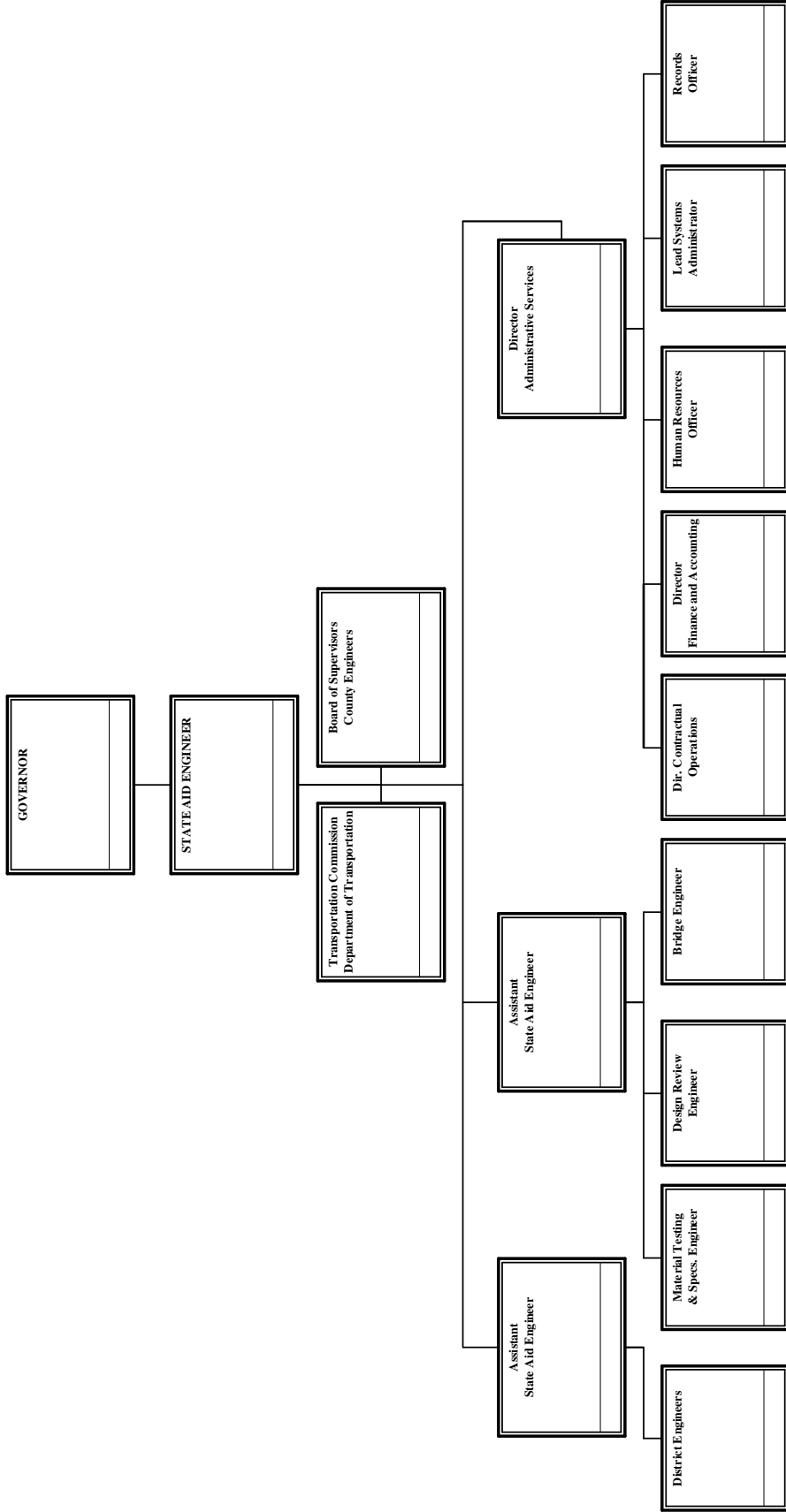
**OFFICE OF STATE AID ROAD CONSTRUCTION**  
**SUMMARY ANNUAL REPORT**  
**FOR**  
**THE FISCAL YEAR JULY 1, 2009 TO JUNE 30, 2010**  
**TOGETHER WITH**  
**A PROGRESS REPORT FROM THE BEGINNING OF THE**  
**PROGRAM (MAY, 1950) TO JUNE 30, 2010**

**TABLE OF CONTENTS**

	<u>Page</u>
Organizational Chart	1
State Aid Road Program:	
Background of Program	2
Organization of Program	3
Operation of Program	4
Type or Character of Construction and Reseal Programs	5
Progress of Program	6
Revenue Sources and Amounts	11
Receipts and Disbursements	13
Funding Summary	14
Summary of Administrative Expenses	15
Out-of-State Travel to Conventions and Meetings	17
Automobile Expenditures for State-Owned Vehicles	18
Improvements Let to Contract from July 1, 2009 thru June 30, 2010	19
Improvements Made on State Aid System from June, 1950, thru June 30, 2010	21
State Aid Program Construction and Engineering Disbursements from July 1, 2009 thru June 30, 2010	24
Local System Bridge Program Construction and Engineering Disbursements from July 1, 2009, thru June 30, 2010	26

**OFFICE OF STATE AID ROAD CONSTRUCTION  
ORGANIZATION CHART**

Fiscal Year 2010  
Annual Report



## **THE STATE AID ROAD PROGRAM**

This report primarily summarizes the operations and progress of the State Aid Program for the fiscal year July 1, 2009 to June 30, 2010.

It is considered appropriate, however, to include an overall background of the program covering the enabling legislation, organization and functions at the State Aid Office and county levels, total funds expended, and total construction improvements accomplished.

An estimate of the program volume anticipated for the fiscal year July 1, 2010 to June 30, 2011 is also included in the report.

### **BACKGROUND OF PROGRAM**

The State Aid Program had its beginning with the passage of Chapter 6, Laws of the Extraordinary Session of 1949 (Section 65-9-[1-33] of the Mississippi Code of 1972). This legislation provided for the creation of a division within the State Highway Department, to be known as the Division of State Aid Road Construction, and to be charged with the responsibility of administering the program at the state level. The 1992 Legislature passed Senate Bill 2763 which created the Mississippi Department of Transportation. Under this bill the State Highway Department became known as the Department of Transportation and the Division of State Aid Road Construction became known as the Office of State Aid Road Construction.

The Enabling Act also provided for a State Aid System, to be composed of the principal collector and distributor routes in the 82 counties, connecting with the State Highway System and other principal county roads to form a network of secondary roads for the state. This system was originally limited to 11,656.4 miles, with each county allocated a percentage of this eligible mileage. The State Legislature at its 1962 Regular Session increased the eligible system mileage to 23,312.8 miles. No change was made in the allocation percentages. In 1994, under House Bill 1302, the allocation percentages were revised and the eligible mileage was increased to 25,857.04 miles. There are 19,002.90 miles actually designated by the Boards and approved by the State Aid Engineer as of June 30, 2010.

The 1994 Regular Session of the Legislature passed House Bill 1302 which included the establishment of a Local System Bridge Replacement and Rehabilitation Program (LSBP), (Section 65-37[1-15] of the Mississippi Code of 1972). The program provides funding for replacement and rehabilitation of deficient bridges maintained by counties or municipalities excluding bridges on the State Aid System, the municipal urban system or the rural major collector system. The Office of State Aid Road Construction is charged with the responsibility of administering the LSBP program under rules and regulations promulgated by the State Aid Engineer.

The 2001 Regular Session of the Legislature passed Senate Bill No. 2318 which established the Local System Road Program (LSRP), (Section 65-18[1-17] of the Mississippi Code of 1972). The program gives the counties the ability to use LSBP and State Aid funds (subject to certain criteria) for the construction, reconstruction and paving of county roads not on the State Aid Road System.

## **ORGANIZATION OF PROGRAM**

### **Organization of the State Aid Office**

The State Aid Enabling Act provides that the Office of State Aid Road Construction be directed by a State Aid Engineer, who is appointed by the Governor for terms of four years each (as amended by the Legislature in 1985). It further provides that the State Aid Engineer hire assistant engineers and other employees necessary to carry out the duties and responsibilities set out in the enabling legislation.

The actual organization of the office began with the appointment of the first State Aid Engineer on May 11, 1950. The office was authorized in 2010 to have an organization for a staff of fifty-three (53) full-time employees, including fifteen (15) Registered Professional Engineers. All positions are approved by the Department of Finance and Administration and the State Personnel Board.

### **Organization at the County Level**

Each Board of Supervisors, as the governing agency of the county, is required by statute to appoint a County Engineer, who is a Registered Professional Engineer, to act for and on behalf of the Board and to administer the engineering functions at the county level, subject to the rules and regulations promulgated by the State Aid Engineer.

The Board is also required to appoint a Local System Bridge Engineer to administer the LSBP program at the county level. The duties of the LSBP Engineer parallel those of the County Engineer and the Board may elect to appoint the County Engineer as the LSBP Engineer.

## **OPERATION OF THE PROGRAM**

### **Operation of the Program at the County Level**

It is the responsibility of the Board of Supervisors to designate the roads to be included in the county's State Aid System; adopt annual construction programs; acquire rights-of-way for State Aid projects; advertise for bids; award contracts; and maintain completed projects after construction.

The County Engineers' responsibilities and duties include, but are not limited to, the following: Assist the Boards of Supervisors in the designation and modification of their State Aid Systems; prepare annual construction programs; make surveys and prepare detailed plans and designs; make field inspections with the State Aid Engineer's representatives; prepare proposals for advertisement for bids; attend lettings at the county level; provide engineering controls (staking, etc.); supervise and inspect construction; prepare estimates for payment to the contractors; and make annual maintenance inspections of completed projects.

### **Operation of the Program at the State Level**

It is the responsibility of the State Aid Engineer and his staff to prepare and adopt uniform design standards and specifications for the construction and maintenance of State Aid projects; approve all additions to the State Aid System; approve all construction programs, plans and specifications; authorize advertisement for bids; concur in the award of the contracts; approve and disburse all payments made from the project fund; approve the final acceptance of completed projects; and make annual and other periodic inspections of completed projects to see that they are properly maintained by the respective Boards of Supervisors.



## **TYPE OR CHARACTER OF CONSTRUCTION AND RESEAL PROGRAMS**

### **Construction**

During the early years of the program (the 1950's), many counties had a great need for bridges and graded roadways with a gravel surface, although many other counties began their State Aid Programs with the construction of hard-surfaced (blacktop) improvements.

It has been the objective throughout the program to construct roads that would connect with the State Highway System and other State Aid routes to form a network of secondary roads. At the present time, all programs now being approved provide for the future completion of a hard-surfaced facility.

The first hard-surfaced State Aid roads, which were completed in the beginning of the program, now need asphalt overlays. It will be noted from the summaries to follow in this report that a total of 3,648.7 miles of hot mix asphalt overlay construction (some surfaces were widened) has been accomplished. This points to the fact that the principal or arterial State Aid roads must now be upgraded to meet increasing traffic volumes and heavier loads. It is anticipated that the need for these betterments on the principal routes will continue to increase.

### **Maintenance and Reseal Work**

The original State Aid Act did not permit the use of State Aid funds for the reseal of existing bituminous surfaces, which work consists of a light application of liquid asphalt and a light application of a fine or seal aggregate to cover the asphalt. Reseal work is regarded as maintenance. The Legislature, during its 1962 Session, amended the law to permit the use of State Aid funds (not to exceed 10%) to reseal hard-surfaced roads which had been constructed through the use of State Aid Funds. This 10% limitation was eliminated during the 1982 Legislative Session.

Bituminous surface treatments need to be resealed on an average of every five or six years to protect the surfaces and the investments made therein. A total of 30,598.09 miles have been resealed, with 1,705.07 miles of this total being contracted during the 2010 fiscal year.

The Legislature, during the 1982 Regular Session, amended Section 65-9-25 of the Mississippi Code of 1972 to permit additional State Aid funds to be used for maintenance, repair and reconstruction of State Aid roads which have been constructed in accordance with State Aid standards and specifications.

## PROGRESS OF PROGRAM

## Projects Placed Under Contract from July 1, 2009 thru June 30, 2010

	#	Miles	Cost
LSBP Projects (106 Bridges Replaced)	86	9.631	24,951,844
LSRP (LSBP Funds)	2	0.494	694,400
LSRP (SA Funds)	1	1.982	831,800
Total LSBP and LSRP Projects (LSBP & SA Funds)	89		26,478,044
State Aid & Federal Aid Projects ( <u>including</u> Bridge Inspections)			
Construction			
Grading, Drainage Structures & Paving		75.039	
Grading, Drainage Structures & Gravel Surface		4.049	
Bridges		14.020	
Asphalt Overlay Construction		559.524	
Total Construction Improvements	49	652.632	39,407,761
Reseal & Maintenance Projects (Previously Paved State Aid Routes)	41	1,705.077	19,990,800
Total State Aid & Federal Aid Project ( <u>including</u> Bridge Inspections)	90		59,398,561
NOTE: The above totals, by Counties, are included elsewhere in this report.			
Amounts and Types of Funds Contracted:			
State Aid			53,981,746
County			1,540,315
Federal Funds:			
MDOT Funds			0
Surface Transportation			6,261,565
Appalachian Access			275,000
Bridge Replacement			4,497,692
Bridge Inspection			0
Bridge Posting			0
Congestion Relief			0
Defense Access			0
Development Infrastructure			0
Eastern Federal Land Highway (EFLH)			366,050
Emergency Relief			2,547,953
Federal Land Highways			0
High Priority			819,968
High Risk Rural Road (HRRRP)			1,206,630
National Corridor Planning & Development (NCPD)			0
Public Lands Highway (PLH)			3,490,298
Rural Infrastructure Fund (RIF)			0
Rural Safety Innovation (RSIP)			74,560
Stimulus (ARRA)			2,738,784
Transportation-Community-System Preservation (TCSP)			222,500
Total Funds Contracted			78,023,061
<b>Grand Total all Projects</b>	<b>179</b>		<b>85,876,605</b>

**Projects Completed and/or Placed Under Contract from Beginning of Program in June, 1950, thru June 30, 2010**

	#	Miles	Cost
LSBP Projects (1,606 Bridges Replaced)	929	165.620	267,602,218
LSRP (LSBP Funds)	5	13.984	3,796,700
LSRP (SA Funds)	<u>11</u>	<u>10.210</u>	<u>4,573,495</u>
 Total LSBP and LSRP Projects (LSBP & SA Funds)	 <u>945</u>		 <u>275,972,413</u>
 State Aid & Federal Aid Project (including Bridge Inspections)			
Construction			
Grading, Drainage Structures & Paving		11,008.639	
Grading, Drainage Structures & Gravel Surface		834.609	
Bridges		122.343	
Asphalt Overlay Construction		3,648.706	
Total Construction Improvements	8,405	<u>15,614.297</u>	1,991,665,433
 Reseal & Maintenance Projects (Previously Paved State Aid Routes)	 <u>1,529</u>	 <u>30,598.093</u>	 <u>588,507,167</u>
 Total State Aid & Federal Aid Project (including Bridge Inspections)	 <u>9,934</u>		 <u>2,580,172,600</u>
 <b>Grand Totals all Projects</b>	 <u>10,879</u>		 <u>2,856,145,013</u>

NOTE: The above totals, by Counties, are included elsewhere in this report.

**Projects in Contract Stage as of June 30, 2010**

	#	Miles	Cost
LSBP Projects	112	14.713	31,092,208
LSRP (LSBP Funds)	2	0.494	694,400
LSRP (SA Funds)	<u>2</u>	<u>3.679</u>	<u>1,930,800</u>
 Total LSBP and LSRP Projects (LSBP & SA Funds)	 <u><u>116</u></u>		 <u><u>33,717,408</u></u>
State Aid Projects (State Aid Funds):			
Construction	39	61.070	29,100,061
Maintenance	27	299.380	21,087,400
Reseal	23	741.200	35,006,420
Federal Aid Projects (State Aid , Federal & LSBP Funds):			
Surface Transportation	18	55.248	31,202,566
Appalachian Access	4	2.335	2,008,223
Bridge Replacement	18	6.293	18,890,805
Bridge Inspection	2	0.000	3,209,440
Bridge Posting	0	0.000	0
Congestion Relief	0	0.000	0
Defence Access	0	0.000	0
Eastern Federal Land Highway (EFLH)	3	0.299	614,350
Emergency Relief	5	30.718	9,042,935
High Priority	28	129.294	61,389,861
High Risk Rural Road (HRRRP)	6	97.979	2,995,975
Public Land Highways	1	7.290	841,055
Railroad Signal	<u>0</u>	<u>0.000</u>	<u>0</u>
 Total State Aid & Federal Aid Projects	 <u><u>174</u></u>	 <u><u>1,431.106</u></u>	 <u><u>215,389,091</u></u>
 <b>Grand Totals all Projects</b>	 <u><u>290</u></u>	 <u><u>1,449.992</u></u>	 <u><u>249,106,499</u></u>

**Estimated Program Volume for July 1, 2009, thru June 30, 2010**

It is difficult to estimate the miles of construction and reseal improvements that will be let to contract during the coming fiscal year. However, the State Aid Road Construction Program has the potential for a \$100 to \$215 million total program for the fiscal year 2010. In addition, we expect to place under contract \$20 million in LSBP Funds.

As of June 30, 2010, programs (proposed improvements) have been adopted by the Boards of Supervisors and approved by the State Aid Engineer for the following work:

<b>Type of Projects</b>	<b>Number of Projects</b>	<b>Estimated Cost</b>
Total LSBP (System 81)	190	54,519,932
Total LSRP (LSBP Funds)(System 80)	3	2,405,712
Total LSRP (SA Funds)(System 80)	2	903,100
State Aid: (State Aid Funds Only)		
Construction (System 81)	44	22,011,536
Maintenance (System 81)	34	22,042,887
Reseal (System 81)	10	8,068,000
State Aid & Federal Aid Funds		
STP (System 82)	45	26,690,529
STPG (System 32)	4	1,636,317
APL (System 36)	5	1,860,765
BR (System 85)	92	72,142,947
EFLH (System 63)	16	6,670,174
ER (System 66)	10	653,007
HRRRP (System 25)	16	3,836,945
MS, FBD (System 19)	61	143,927,401
PLH (System 62)	2	296,349
<b>GRAND TOTAL</b>	<b>534</b>	<b>\$365,665,601</b>
Total State Aid	339	\$307,836,857

The Boards of Supervisors began the new four-year term on January 1, 2008, and have available for planning and expenditure purposes 90% of the State Aid revenue that will accrue during the 2008-2011 period.

Bridge Replacement and Rehabilitation is a major Federal program that has helped the counties to improve the seriously deficient condition of many State Aid and Federal Aid System bridges. Historically, the Mississippi Department of Transportation transferred approximately 30% of the Bridge Replacement funds that are apportioned to the State Aid program for replacement of deficient bridges on county roads. In fiscal year 2010, \$15,534,022 was transferred. State Aid is projected to receive for fiscal year 2011, \$15,000,000 to be transferred by Mississippi Department of Transportation.

The cost per mile for the construction of projects, embracing grading, drainage structures, small bridges, base and bituminous surfacing, ranges from \$311,521.08 per mile to \$1,247,698.80 per mile, depending on the soil conditions, availability of construction materials and terrain. The average cost of construction projects in fiscal year 2010 was \$398,500.89 per mile.

Projects involving large bridges with long spans and/or projects requiring higher design standards because of heavy traffic demands or other special conditions should not be considered in these cost ranges.

Liquid seal (resealing) projects range from \$30463.18 to \$78,083.35 per mile, depending on the location and on the leveling and base course corrections needed. The average cost of resal projects in fiscal year 2010 was \$38,636.75 per mile.

**REVENUE SOURCES AND AMOUNTS**

Revenues for the State Aid Program are derived from the following state and federal sources:

**State Sources:**

- (a) Section 27-65-75, Mississippi Code of 1972 (as amended by the 1994 and 1999 Regular Sessions of the Legislature), provides for a minimum diversion of \$48,000,000 or 23.25%, whichever is greater, from gasoline, diesel fuel or kerosene tax revenue and \$3,000,000 from sales tax collections into the Office of State Aid Road Construction special fund in each fiscal year. Senate Bill 2985 gave the Bond Commission authority to issue \$20 million in bonds for FY 2004 for the Local System Bridge Program (LSBP). In FY 2004 we received \$20 million for the FY 2004 bond issue. Senate Bill 2010 gave the Bond Commission authority to issue \$20 million in bonds for FY 2005 and \$20 million in bonds for FY 2006. In FY 2005 we received \$3 million in advance against the FY 2005 future bond issue. In FY 2006 we received \$17 million for the remainder of the FY 2005 bond issue and \$4 million in advance against the FY 2006 future bond issue. In FY 2007 we received \$6 million against the FY 2006 future bond issue. Senate Bill 3086 and 3201 gave the Bond Commission authority to issue \$20 million in bonds for FY 2007 and FY 2008 respectively. In FY 2008 we received \$10 million against the remaining FY2006 bond issue and \$10 million against the FY 2007 bond issue. In FY 2009 we received \$10 million against the FY 2007 bond issue and \$5 million against the FY 2008 bond issue. House Bill 1665 gave the Bond Commission authority to issue \$15 million in bonds for FY 2009. House Bill 1722 gave the Bond Commission authority to issue \$20 million for FY10. Senate Bill 3181 gave the Bond Commission authority to issue \$20 million for FY11. The State Treasurer and State Bond Commission have committed to issuing debt obligations when needed to provide funds to obligate to projects when bond proceeds are not yet available. However, the State Treasurer was on occasion unable to fulfill this commitment, thus causing delays in letting LSBP projects go to contract. The LSBP fund earned interest on investments in the amount of \$116,082.88 for FY 2010.
- (b) Section 65-9-17 authorizes the counties to use County funds to supplement State Aid funds for the construction of State Aid roads.

**Federal Sources (Regular):**

MDOT provides a portion of the Surface Transportation Program funds and Bridge Replacement funds made available to the State of Mississippi by the Federal Government to the counties through the State Aid Office.

**Federal Sources (Special):**

- (a) Emergency Relief funds are made available by the Federal Government to the counties through the State Aid Office on an individual project basis, to reconstruct roads and bridges on Federal Aid highways damaged or destroyed by floods, hurricanes, catastrophic failure and other disasters.
- (b) Appalachian Access Highway funds are made available to the counties in the twenty-four county Appalachian area in northeast Mississippi on an individual project basis. These projects are administered by the State Aid Office on an individual project basis through the Federal Highway Administration.
- (c) Section 64-4-15, Mississippi Code of 1972, entitles State Aid to be reimbursed by the Mississippi Development Authority for actual expenses incurred in administering and providing engineering services for MDA projects throughout the state. State Aid provides all services on these projects, with the exception of processing payments for services performed.
- (b) Other funds earmarked by Congress for selected counties.



## RECEIPTS AND DISBURSEMENTS

	State Aid Road Fund	Administration Fund	Local System Bridge Fund
<b>BEGINNING FUNDS BALANCE 07/01/09</b>			
Unobligated Funds	14,510,897	326,886	15,121,161
Project Funds	48,324,347		8,828,561
Federal-Aid Matching Funds	(8,047,757)		
Total Beginning Funds Balance	54,787,487	326,886	23,949,721

## RECEIPTS

Gasoline Tax(Section 27-65-75)	46,321,971		
Sales Tax(Section 27-65-75)	3,000,000		
County Contributions	2,143,931		
FHWA Reimbursements	44,458,437		
Federal Aid Matching Requirements	2,841,453		
Transfers in		4,154,846	18,023,824
Miscellaneous Revenue	130,933		
FY10 Budget Reduction	(6,420,124)		
Total Receipts	92,476,601	4,154,846	18,023,824
Total Funds Available for Expenditures	147,264,088	4,481,732	41,973,545

## DISBURSEMENTS

## Construction Expenditures

State Construction	52,538,836		35,456,641
Federal-aid Construction	37,949,308		
Debt Service Construction	19,421		
Retainage	222,164		(58,553)
MDOT Testing	105,424		143,120
Total Construction	90,835,153	0	35,541,208

## Other Expenditures

Transfers to State Highway Fund 3941	3,160,090		
Transfer to Administration Fund	4,139,996		
Transfer to Other Funds	6,240,124		
Payments on MDB Loan	3,769,542		
Administrative Expenditures		4,723,055	
Refund to Counties and Misc. Transfers	586,779		54,907
Total Other Disbursements	17,896,531	4,723,055	54,907
Total Disbursements	108,731,684	4,723,055	35,596,115

## ENDING FUND BALANCE 6/30/10

Unobligated Funds	5,292,595	568,761	(9,946,980)
Project Funds	37,383,522		16,396,616
Federal-Aid Matching Funds	(5,026,003)		
Total Ending Funds Balance	37,650,114	568,761	6,449,636
Total Funds Accounted For	146,381,798	5,291,816	42,045,752

**FUNDING SUMMARY**

**FUNDS MADE AVAILABLE DURING FY 2010**

Sources:

Gasoline Tax (Section 27-65-75)	46,321,971	
Sales Tax (Section 27-65-75)	3,000,000	
County Contributions	2,143,931	
Federal Aid Matching Requirements	2,841,453	
Miscellaneous State Aid Revenue	130,933	
Local System Bridge Funds	18,023,824	
Administrative Transfer from Counties	4,154,846	
FY10 Budget Reduction	(6,420,124)	
Federal Funds--		
FHWA Reimbursements	44,458,437	
Total Federal Funds	<u>44,458,437</u>	
Total Fiscal Year Revenue		114,655,271
Less: Requirements for Administrative Expenses		<u>(4,154,846)</u>
<b>Total Funds Made Available for Construction During FY 2010</b>		<b><u><u>110,500,425</u></u></b>

**PROJECTION OF REVENUE FOR FY 2011 AND FY 2012**

Sources:

	<b><u>FY 2011</u></b>	<b><u>FY 2012</u></b>
Gasoline Tax (Section 27-65-75)	57,000,000	57,000,000
Sales Tax (Section 27-65-75)	3,000,000	3,000,000
County Contributions	22,400,000	22,400,000
Federal Aid Matching Requirements	22,500,000	22,500,000
Miscellaneous State Aid Revenue	4,540,769	4,540,769
Local System Bridge Funds	35,000,000	35,000,000
Administrative Transfer from Counties	5,000,000	5,048,576
Budget Reduction	0	0
Federal Funds - FHWA Reimbursements	<u>90,000,000</u>	<u>90,000,000</u>
Total Fiscal Year Revenue	239,440,769	239,489,345
Less: Requirements for Administrative Expenses	(5,000,000)	(5,048,576)
<b>Total Revenue Available for Construction</b>	<b><u><u>234,440,769</u></u></b>	<b><u><u>234,440,769</u></u></b>

**SUMMARY OF ADMINISTRATIVE EXPENSES**

**Salaries, Wages and Fringe Benefits:**

Salaries and Wages	2,379,415	
Retirement Matching	287,366	
Social Security Matching	175,745	
Workers' Compensation	10,766	
Group Health Insurance	217,279	
COBRA Health Insurance	720	
Group Life Insurance	5,239	
Unemployment Insurance Tax	4,655	
Cafeteria Plan	2,636	3,099,003
		<hr/>

**Travel:**

In-State	40,247	
Out-of-State	12,042	52,289
		<hr/>

**Contractual Services:**

Tuition & Employee Training	12,979	
Travel Related Registration	599	
Postage	20,000	
Freight	588	
Advertising & Public Information	237	
Rents	13,080	
Repair/Service Office Equipment	230	
Engineering Services	667,178	
SAAS	7,348	
MMRS	7,083	
Audit Department	41,601	
State Personnel Board	8,560	
Tort Claims Board Assessment	300	
Fidelity Bonds	5,100	
Insurance Computer Equipment	238	
Procurement Card/Contractual Purchases	2,707	787,828
		<hr/>

**Information Technology:**

IS Professional Fees - Outside Vendor	562,043	
ITS Fees	21,013	
ITS Training/Education	724	
Service Fees to State Computer Center	11,814	
Software Acquisition	2,893	
Telephone Fees	10,015	
Long Distance	1,458	
Usage Time Cellular Telephones	7,236	617,196
		<hr/>

**SUMMARY OF ADMINISTRATIVE EXPENSES**

**Commodities:**

Printing and Binding	6,028	
Duplication Supplies	2,941	
Office Supplies and Materials	8,083	
Paper Supplies	2,028	
Maps and Manuals	287	
Office Equipment	2,167	
Fuel Card - Gas, Oils, Greases, Etc.	28,422	
Tires and Tubes - Auto	2,060	
Vehicle Repairs	1,011	
Batteries & Accessories for Vehicles	2,600	
Engineering Supplies	1,990	
Equipment Repair & Parts	1,908	
Other Supplies and Materials	3,273	
Procurement Card Purchases	2,477	65,276

**Capital Outlay:**

Automobiles	51,873	
Mainframe Systems Equipment	49,590	101,463

**Total**

4,723,055

## OUT-OF-STATE TRAVEL TO CONVENTIONS AND MEETINGS

<b>Employee's Name</b>	<b>Travel Destination</b>	<b>Travel Meeting Title</b>	<b>Total Amount</b>
Charles David Barrett	Nashville, TN	Meeting with Tennessee Department of Transportation	\$194.00
John Ferris Bond	Birmingham, AL	Southern Transportation Civil Rights Conference	\$635.00
Kimberly Cooper	Birmingham, AL	Southern Transportation Civil Rights Conference	\$967.00
Trent Curtis	Palm Springs, CA	AASHTO 2009 Annual Meeting	\$2,506.00
Jerry Gilliland	Palm Springs, CA	AASHTO 2009 Annual Meeting	\$2,185.00
John Harper	Fort Worth, TX	NACE 2010	\$580.00
Travis Henley	Powder Springs, GA	Signs and Markings LEVEL II	\$450.00
Daniel Jordan	Birmingham, AL	Southern Transportation Civil Rights Conference	\$835.00
James Maher	Nashville, TN	Meeting with Tennessee Department of Transportation	\$716.00
Brooks Miller	Palm Springs, CA	AASHTO 2009 Annual Meeting	\$1,617.00
Sandra Lynn Mohr	Birmingham, AL	Southern Transportation Civil Rights Conference	\$937.00
Dan Tolar	Palm Springs, CA	AASHTO 2009 Annual Meeting	\$420.00
<b>GRAND TOTAL</b>			<b>\$12,042.00</b>

**AUTOMOBILE EXPENDITURES FOR STATE-OWNED VEHICLES**

<b>Make/Model</b>	<b>Year</b>	<b>Tag #</b>	<b>Cost</b>	<b>Cost of Use Estimate</b>	<b>Operating Expense</b>	<b>Total Expense</b>	<b>Miles Traveled</b>	<b>Cost per Mile</b>
Ford/Taurus	2005	G032905	12,396	1,262.25	755.45	4,496.90	14,850	0.3028215
Ford/Crown Victoria	2005	G032908	19,288	1,505.18	1,460.07	6,822.85	17,708	0.3852976
Ford/Crown Victoria	2006	G036547	19,792	1,826.91	2,051.12	7,836.43	21,493	0.3646036
Chevrolet/Malibu	2007	G042497	14,990	1,736.13	2,105.82	6,839.95	20,425	0.334881
Chevrolet/Impala	2008	G044301	15,800	1,647.47	1,559.21	6,366.68	19,382	0.3284842
Chevrolet/Impala	2008	G044300	15,800	3,222.95	3,558.47	9,941.42	37,917	0.2621889
Chevrolet/Impala	2008	G044302	15,800	2,703.51	2,495.22	8,358.73	31,806	0.2628036
Chevrolet/Impala	2009	G050967	16,679	1,378.87	1,705.76	6,420.43	16,222	0.3957854
Nissan/Titan	2009	G051350	23,756	447.02	1,401.78	6,600.00	5,259	1.2549905
Nissan/Titan	2009	G051349	23,756	238.43	460.40	5,450.03	2,805	1.9429679
Chevrolet/Impala	2010	G052757	17,291	1,140.62	221.73	4,820.55	13,419	0.3592328
Chevrolet/Impala	2010	G052756	17,291	847.88	103.57	4,409.65	9,975	0.4420697
Chevrolet/Impala	2010	G052758	17,291	1,121.58	283.97	4,863.75	13,195	0.3686052

## IMPROVEMENTS LET TO CONTRACT FROM JULY 1, 2009 THRU JUNE 30, 2010

County	Construction Miles and Cost						Reseal & Maintenance		
	Surfacing	Grading & Gravel	Bridges #	Bridges Miles	Resur- facing	Total Miles	Cost	Miles	Cost
Adams	1.249	-	-	-	-	1.249	-	23	-
Alcorn	5.231	-	7	0.228	-	5.459	-	46	-
Amite	1.609	-	3	0.232	41.678	43.519	-	-	2,359,800
Attala	0.723	0.195	9	0.316	34.486	35.720	213,200	68	-
Benton	2.757	-	3	0.311	-	3.068	411,000	0	-
Bolivar	-	-	-	-	-	-	-	41	-
Calhoun	-	-	-	-	-	-	1,212,300	13	-
Carroll	-	-	3	0.321	45.009	45.330	-	-	1,849,900
Chickasaw	-	-	1	0.104	-	0.104	171,600	17	-
Choctaw	0.100	-	2	0.117	-	0.217	152,750	53	-
Claiborne	-	-	-	-	4.308	4.308	512,500	23	1,656,300
Clarke	0.419	-	2	0.067	-	0.486	221,700	44	-
Clay	-	0.166	4	0.455	-	0.621	-	25	-
Coahoma	-	-	-	-	0.348	0.348	-	24	-
Copiah	-	-	5	0.570	40.858	41.428	275,200	-	2,640,600
Covington	0.207	-	1	0.009	0.543	0.759	-	24	-
DeSoto	0.623	-	2	0.006	3.965	4.594	-	7	-
Forrest	-	-	-	-	11.594	11.594	-	-	-
Franklin	4.197	-	-	-	-	4.197	-	41	-
George	-	-	-	-	-	-	-	-	1,975,700
Greene	-	-	2	0.164	18.989	19.153	267,500	-	1,673,900
Grenada	0.964	-	-	-	-	0.964	982,000	34	-
Hancock	-	-	1	0.123	22.132	22.255	2,547,953	7	-
Harrison	0.330	-	4	0.070	14.420	14.820	662,000	1	-
Hinds	0.536	-	4	0.370	5.424	6.330	402,500	0	-
Holmes	-	-	2	0.300	31.889	32.189	2,148,000	0	2,774,600
Humphreys	-	-	2	0.450	3.558	4.008	1,646,100	-	-
Issaquena	-	-	-	-	-	-	-	5	-
Itawamba	0.271	-	5	0.348	2.707	3.326	1,001,700	11	-
Jackson	-	-	1	0.031	-	0.031	-	-	-
Jasper	-	-	2	0.083	-	0.083	-	0	971,500
Jefferson	-	-	1	0.114	2.443	2.557	828,200	23	-
Jefferson Davis	0.133	-	1	0.022	-	0.155	-	55	-
Jones	0.296	-	3	0.358	10.106	10.760	-	49	-
Kemper	1.532	1.982	3	0.126	-	3.640	-	-	-
Lafayette	0.236	-	4	0.187	4.392	4.815	-	8	452,200
Lamar	-	-	1	0.076	-	0.076	-	6	1,191,700
Lauderdale	-	-	7	0.507	-	0.507	-	5	-
Lawrence	5.585	-	6	1.076	7.549	14.210	-	2	228,100
Leake	-	-	1	0.473	22.700	23.173	2,048,000	-	1,065,600
Lee	1.679	-	3	0.472	-	2.151	-	0	2,772,100
Leflore	-	-	-	-	2.940	2.940	499,600	51	-
Lincoln	10.631	-	1	0.022	-	10.653	3,490,298	47	-
Lowndes	-	-	-	-	0.470	0.470	1,125,700	87	358,900
Madison	0.474	-	1	0.037	5.147	5.658	-	-	1,138,700
Marion	2.159	-	-	-	-	2.159	-	0	111,200
Marshall	4.869	-	2	0.015	2.100	6.984	2,814,300	38	-
Monroe	-	-	-	-	10.945	10.945	-	46	1,437,500
Montgomery	-	0.314	2	0.034	-	0.348	-	7	508,900
Neshoba	2.816	-	3	0.119	-	2.935	522,600	55	-
Newton	-	-	-	-	-	-	-	-	-
Noxubee	-	-	-	-	-	-	-	47	1,640,600
Oktibbeha	1.179	-	-	-	9.509	10.688	2,788,300	6	-

**IMPROVEMENTS LET TO CONTRACT FROM JULY 1, 2009 THRU JUNE 30, 2010**

County	Construction Miles and Cost						Reseal & Maintenance		
	Surfacing	Grading & Gravel	Bridges #	Bridges Miles	Resurfacing	Total Miles	Cost	Miles	Cost
Panola	0.158	0.103	6	0.626	2.524	3.411	-	60	369,900
Pearl River	0.874	-	7	0.296	5.109	6.279	857,800	93	327,700
Perry	2.439	-	-	-	-	2.439	-	0	101,200
Pike	1.484	-	4	0.450	-	1.934	951,500	75	-
Pontotoc	0.656	-	1	0.053	-	0.709	-	12	940,500
Prentiss	0.902	-	3	0.146	7.096	8.144	-	-	1,432,100
Quitman	-	-	-	-	2.740	2.740	-	-	-
Rankin	-	-	-	-	36.178	36.178	6,240,000	-	-
Scott	0.196	0.612	4	0.753	-	1.561	-	39	-
Sharkey	-	-	-	-	3.854	3.854	-	2	-
Simpson	-	0.245	3	0.292	1.865	2.402	-	28	228,300
Smith	1.359	-	1	0.006	-	1.365	840,300	0	921,400
Stone	1.711	-	2	0.034	5.424	7.169	187,800	21	219,500
Sunflower	3.587	-	2	0.198	-	3.785	-	23	1,675,600
Tallahatchie	5.946	-	2	0.228	3.045	9.219	-	3	-
Tate	-	-	3	0.222	-	0.222	-	3	33,900
Tippah	0.403	-	3	0.384	-	0.787	228,700	33	1,002,100
Tishomingo	-	-	-	-	-	-	65,000	42	1,588,600
Tunica	-	-	1	0.042	-	0.042	-	9	-
Union	-	-	1	0.126	-	0.126	-	64	-
Walthall	-	-	2	0.309	59.710	60.019	-	59	184,800
Warren	0.114	-	3	0.464	-	0.578	802,800	4	-
Washington	-	-	3	0.297	-	0.297	-	-	-
Wayne	-	-	-	-	67.704	67.704	1,507,960	-	2,167,600
Webster	-	0.204	4	0.214	-	0.418	-	-	-
Wilkinson	-	0.228	2	0.158	-	0.386	-	-	-
Winston	4.405	-	3	0.158	4.066	8.629	374,900	60	-
Yalobusha	-	-	1	0.158	-	0.158	406,000	36	614,300
Yazoo	-	-	1	0.093	-	0.093	-	-	-
Statewide	-	-	-	-	-	-	-	-	-
<b>Totals</b>	<b>75.039</b>	<b>4.049</b>	<b>166</b>	<b>14.020</b>	<b>559.524</b>	<b>652.632</b>	<b>39,407,761</b>	<b>1,705.077</b>	<b>38,615,300</b>



IMPROVEMENTS MADE ON THE STATE AID SYSTEM FROM JUNE 30, 1950, THRU JUNE 30, 2010

County	State Aid Mileage				State Aid Improvements						Funds Expended or Obligated To Contact	
	Total Allocation	Actually Designated	Paved Mileage	Grading & Grav. Surf.	Brs. Structural #	Actual Miles	Total Overlay or Resurf.	Total Construction	Surfacing Reseal/Maint.	Construction	Reseal/Maint.	
												Miles
Adams	244.42	187.2	48.436	0.742	19	0.604	49.782	37.698	87.480	120.163	21,143,857	2,952,756
Alcorn	280.16	185.1	117.431	1.788	55	1.185	120.404	27.107	147.511	309.050	20,111,748	8,636,121
Amite	398.65	253.15	191.114	3.889	54	1.571	196.574	96.894	293.468	584.328	30,071,154	7,876,245
Attala	345.03	250.85	145.107	8.902	71	1.836	155.845	34.486	190.331	602.856	29,938,915	7,931,898
Benton	205.57	167	104.782	9.564	35	0.920	115.266	-	115.266	171.104	15,475,136	2,825,702
Bolivar	339.41	202.7	101.351	7.117	46	0.874	109.342	80.137	189.479	248.346	25,186,562	7,134,849
Calhoun	321.72	235.3	129.197	15.738	91	1.632	146.567	47.753	194.320	469.022	25,773,507	6,562,283
Carroll	300.74	204.35	110.090	13.025	69	1.740	124.855	91.065	215.920	300.827	22,512,947	7,365,112
Chickasaw	247.19	195.88	104.970	15.353	66	1.421	121.744	0.463	122.207	324.289	16,942,261	5,873,093
Choctaw	235.68	199.7	111.873	30.469	85	1.592	143.934	0.225	144.159	380.394	19,014,615	7,609,306
Clabourne	240.12	154.5	92.636	10.000	25	1.202	103.838	91.059	194.897	244.529	22,178,940	6,513,477
Clarke	370.67	291	206.434	0.862	56	1.586	208.882	32.970	241.852	713.510	25,926,163	10,555,958
Clay	223.90	168	96.968	9.891	68	1.958	108.817	30.530	139.347	302.887	30,426,127	7,404,647
Coahoma	340.37	216.1	150.493	1.345	27	0.793	152.631	160.610	313.241	366.866	24,432,909	5,084,101
Copiah	442.94	387.7	240.339	4.415	111	3.224	247.978	64.163	312.141	645.405	41,174,902	10,616,275
Covington	289.12	223.8	146.394	2.344	74	2.337	151.075	10.537	161.612	584.911	20,608,162	7,976,451
DeSoto	345.17	197.4	100.430	20.603	50	0.954	121.987	29.826	151.813	168.385	31,881,576	8,504,275
Forrest	319.89	261.2	63.807	5.608	70	2.105	71.520	85.944	157.464	310.567	23,315,090	8,852,405
Franklin	398.65	225.88	162.772	0.980	39	1.596	165.348	37.215	202.563	453.142	28,297,215	8,775,854
George	258.73	177.3	123.949	5.210	47	1.113	130.272	11.302	141.574	293.555	17,839,367	7,352,387
Greene	412.64	290.3	207.278	9.549	92	2.251	219.078	58.250	277.328	454.205	38,470,912	6,214,480
Grenada	214.27	165.28	102.065	1.914	31	0.740	104.719	25.741	130.460	429.234	30,353,966	7,089,914
Hancock	251.92	163.2	96.943	10.139	42	0.798	107.880	42.533	150.413	189.897	37,870,408	6,125,616
Harrison	414.63	267.7	134.052	1.871	51	1.954	137.877	36.607	174.484	381.571	41,434,154	8,215,810
Hinds	440.95	359	248.058	1.504	40	1.654	251.216	92.944	344.160	242.352	35,610,924	8,097,929
Holmes	445.27	322.4	222.485	18.381	62	1.710	242.576	97.912	340.488	679.078	31,477,242	11,245,224
Humphreys	223.26	204.9	111.017	16.225	34	1.026	128.268	10.701	138.969	253.435	14,565,602	6,378,169
Issaquena	128.89	91.1	36.131	21.852	7	0.161	58.144	28.007	86.151	105.077	6,559,866	4,734,432
Itawamba	326.98	222.35	161.222	6.298	84	2.041	169.561	16.146	185.707	342.666	27,812,107	6,732,968
Jackson	351.66	146.3	60.193	6.723	29	1.409	68.325	7.893	76.218	87.990	23,956,088	5,447,710
Jasper	307.73	291.4	172.617	4.278	76	1.933	178.828	26.025	204.853	387.182	26,224,038	6,228,750
Jefferson	221.47	188.8	74.806	6.345	45	1.162	82.313	23.699	106.012	298.948	14,148,453	7,772,577
Jefferson Davis	251.58	162.83	112.908	3.829	55	1.255	117.992	46.067	164.059	415.071	18,727,908	7,229,708
Jones	502.20	329.3	178.889	30.507	79	2.616	212.012	59.545	271.557	571.818	35,601,555	11,498,789
Kemper	382.33	288.35	206.748	32.665	88	1.682	241.095	29.968	271.063	360.768	30,771,441	4,941,148

IMPROVEMENTS MADE ON THE STATE AID SYSTEM FROM JUNE 30, 1950, THRU JUNE 30, 2010

County	State Aid Mileage				State Aid Improvements						Funds Expended or Obligated To Contact	
	Total Allocation	Actually Designated	Paved Mileage	Grading & Grav. Surf.	Brs. Structural #	Actual Miles	Total Overlay or Resurf.	Total Construction	Surfacing Reseal/Maint.	Construction	Reseal/Maint.	
												Miles
Lafayette	341.95	184.7	108.252	8.410	101	2.064	118.726	35.438	154.164	343.733	24,813,530	6,152,853
Lamar	318.10	207.78	110.304	1.474	51	1.582	113.360	87.450	200.810	483.832	20,868,677	10,011,740
Lauderdale	439.39	412.3	246.918	1.619	68	1.814	250.351	96.368	346.719	466.253	26,913,412	8,459,098
Lawrence	261.10	207.72	125.845	8.177	64	2.483	136.505	73.548	210.053	401.493	49,375,746	6,418,671
Leake	296.54	223.33	146.788	11.073	61	1.928	159.789	38.697	198.486	333.017	27,961,154	5,895,769
Lee	343.24	194.4	109.494	17.876	74	1.912	129.282	19.648	148.930	357.368	30,187,410	11,423,646
Leflore	311.14	275.9	134.409	5.456	59	2.585	142.450	9.928	152.378	572.890	24,859,649	10,419,670
Lincoln	433.62	358.8	208.446	4.187	69	1.847	214.480	31.596	246.076	548.208	41,297,776	8,233,752
Lowndes	334.88	189	112.242	6.966	60	1.325	120.533	119.007	239.540	377.301	30,287,657	7,793,687
Madison	369.85	285.3	154.919	3.352	56	1.390	159.661	57.271	216.932	421.207	29,003,622	5,522,039
Marion	331.94	287.6	185.490	3.838	62	1.226	190.554	92.845	283.399	546.900	21,553,818	7,939,572
Marshall	315.61	211	120.757	8.431	42	1.497	130.685	13.634	144.319	218.122	34,192,554	5,613,138
Monroe	328.95	203.7	142.349	7.454	45	0.904	150.707	37.745	188.452	402.509	22,379,015	8,171,323
Montgomery	251.78	210.85	89.916	24.537	82	1.543	115.996	10.429	126.425	286.341	20,172,675	7,954,554
Neshoba	377.67	312.2	185.718	34.354	90	1.633	221.705	9.884	231.589	399.864	30,682,682	7,200,892
Newton	296.86	273	170.391	6.404	67	1.048	177.843	12.234	190.077	318.597	23,072,471	4,738,648
Noxubee	317.05	222	127.970	6.497	56	1.125	135.592	19.013	154.605	379.604	23,342,341	5,895,890
Oktibbeha	285.13	202.4	132.558	10.305	24	0.411	143.274	30.737	174.011	413.943	20,937,903	4,879,097
Panola	380.40	250.4	157.586	6.515	60	1.800	165.901	116.497	282.398	472.415	31,866,261	6,085,567
Pearl River	410.01	239.6	146.860	14.277	66	2.080	163.217	49.026	212.243	627.117	30,718,113	11,043,120
Perry	286.75	223.8	90.159	6.040	62	1.463	97.662	32.700	130.362	408.417	23,072,610	6,268,006
Pike	338.50	257.1	133.282	15.512	61	1.716	150.510	7.637	158.147	522.436	22,735,408	10,744,638
Pontotoc	267.15	180.09	98.699	10.225	25	0.616	109.540	4.712	114.252	243.738	14,888,558	8,246,626
Prentiss	281.65	198.52	123.957	20.356	70	1.491	145.804	29.588	175.392	235.924	23,716,442	6,032,754
Quitman	217.38	184.6	86.054	6.238	49	1.346	93.638	27.232	120.870	133.779	15,971,048	3,466,694
Rankin	541.49	270.2	136.958	10.242	81	1.523	148.723	128.345	277.068	284.887	49,506,639	9,143,163
Scott	310.55	223.3	135.873	15.732	88	1.972	153.577	11.786	165.363	397.708	23,035,927	8,624,432
Sharkey	164.28	111.6	73.556	14.392	15	0.468	88.416	40.846	129.262	164.447	11,453,306	4,998,596
Simpson	348.73	286.75	171.519	4.117	81	2.319	177.955	22.061	200.016	513.837	29,029,102	7,393,303
Smith	321.72	260	184.169	10.627	67	1.822	196.618	14.211	210.829	473.399	29,310,188	6,798,492
Stone	223.60	181.9	127.180	2.088	35	0.685	129.953	49.017	178.970	316.936	19,194,664	4,355,660
Sunflower	412.64	249.8	141.429	22.194	53	1.758	165.381	55.264	220.645	259.245	33,428,047	6,740,558
Tallahatchie	296.07	289.43	146.786	21.900	42	1.523	170.209	26.386	196.595	463.680	25,471,895	7,588,635
Tate	244.16	164.8	51.274	17.418	61	1.896	70.588	25.072	95.660	162.211	18,613,948	4,894,706
Tippah	290.95	217.3	138.559	13.654	53	1.173	153.386	9.368	162.754	272.038	24,115,431	4,272,669

IMPROVEMENTS MADE ON THE STATE AID SYSTEM FROM JUNE 30, 1950, THRU JUNE 30, 2010

County	State Aid Mileage			State Aid Improvements							Funds Expended or Obligated To Contact	
	Total Allocation	Actually Designated	Paved Mileage	Grading & Grav. Surf.	Brs. Structural #	Miles	Total Actual Miles	Overlay or Resurf.	Total Construction	Surfacing Reseal/Maint.	Construction	Reseal/Maint.
Tishomingo	263.67	205	122.546	4.107	55	1.175	127.828	62.973	190.801	191.599	21,738,308	7,675,419
Tunica	242.45	204.2	139.189	12.521	79	0.624	152.334	92.584	244.918	203.571	17,449,913	5,884,191
Union	277.64	188.1	107.103	16.112	47	1.133	124.348	17.358	141.706	234.215	24,813,990	5,363,487
Walthall	274.85	218.86	126.857	3.129	70	1.634	131.620	87.873	219.493	538.912	17,778,034	11,012,229
Warren	284.23	193.2	67.877	8.015	32	1.226	77.118	47.143	124.261	232.245	22,721,152	4,910,456
Washington	377.67	359.5	77.808	0.499	57	1.985	80.292	71.274	151.566	105.026	31,283,441	5,186,288
Wayne	410.31	372.1	221.180	11.439	70	1.736	234.355	76.001	310.356	632.384	28,889,545	11,940,471
Webster	277.42	205.5	106.923	7.467	79	1.431	115.821	5.187	121.008	532.608	19,625,947	7,778,285
Wilkinson	223.80	152.9	95.054	1.864	31	0.977	97.895	39.793	137.688	274.195	18,759,404	5,054,172
Winston	296.54	280.55	202.589	34.845	65	1.282	238.716	27.159	265.875	324.493	28,180,303	3,778,392
Yalobusha	212.75	176.7	99.456	1.284	46	0.976	101.716	-	101.716	504.792	15,542,551	6,839,234
Yazoo	400.98	317.8	211.406	11.465	38	1.561	224.432	104.119	328.551	807.229	27,700,301	9,306,462
Totals	25,857.04	19,002.90	11,008.639	834.609	4,742	122.343	11,965.591	3,648.706	15,614.297	30,598.093	2,108,348.383	588,507.167

**OFFICE OF STATE AID ROAD CONSTRUCTION**

**FY 2010 ANNUAL REPORT**

**STATE AID PROGRAM CONSTRUCTION AND ENGINEERING DISBURSEMENTS BY COUNTY AND SYSTEM FROM JULY 1, 2009 THRU JUNE 30, 2010**

COUNTY	RR CROSSING RRS/STP-C & RR SIGNAL RRS/STP-S		MDOT HIGH PRIORITY MS		HIGH RISK RURAL ROAD PROGRAM		RURAL SECONDARY GRADE RSG/STPG		ACCESS HIGHWAY LAKES AHL		APPALACHIAN ACCESS HIGHWAY APL		PUBLIC LAND HIGHWAYS EFL/PLH		DEFENSE ACCESS AGMC		EMERGENCY RELIEF		CONGESTION RELIEF		LOCAL SYSTEM ROAD PROJECTS		STATE AID PROJECTS SAP		SURFACE TRANSPORTATION RURAL COUNTIES STP		BRIDGE REPLACEMENT RR		TOTALS BY COUNTY				
	System	01 & 02	System	19	System	25	System	32	System	34	System	36	System	62 & 63	System	64	System	66	System	68	System	80	System	81	System	82 & 46	System	85					
Adams																															68,852		
Alcorn																																230,168	
Anne																																570,199	
Atala																																488,009	4,207,278
Benton																																812,908	
Bolivar																																1,189,620	
Calhoun																																244,593	943,964
Carroll																																1,229,549	
Chickasaw																																230,662	
Choctaw																																385,015	
Cherokee																																2,088,491	
Clarke																																63,884	72,978
Clay																																349,409	2,044,730
Columbia																																175	83,848
Coshua																																131,895	2,381,839
Copah																																848,587	
Covington																																51,368	413,006
DeSoto																																1,622,701	
Forrest																																819,982	1,645,843
Franklin																																45,204	865,186
George																																20,670	73,181
Greene																																252,247	1,045,972
Greene																																1,173,761	1,193,563
Grenada																																35,862	249,724
Hancock																																599,248	
Harrison																																467,553	1,923,664
Hinds																																399,682	970,849
Holmes																																79,741	578,515
Humphreys																																189,088	189,088
Issaquena																																851,926	1,426,666
Jackson																																177,473	202,000
Jackson																																103,625	1,431
Jasper																																264,986	1,050,056
Jefferson																																667,517	37,208
Jefferson																																501,333	71,186
Jones																																347,385	616,551
Kemper																																768,974	1,054,788
Lafayette																																1,407,403	1,170,388
Lamar																																2,498	771,472
Lauderdale																																1,432,765	21,322
Lawrence																																359,515	1,429,056
Leake																																666,677	1,438,536
Lee																																1,993,051	6,289,709
Lee																																851,049	1,526,726
Leflore																																500	2,067,702
Leflore																																300	2,199,653
Lincn																																296,043	911,564
Lowndes																																2,102,546	2,841,045
Madison																																1,432,396	1,516,933
Marion																																338,174	338,174
Marshall																																1,177,310	1,994,829
Marshall																																675	112,610
Monroe																																1,241,852	1,354,462
Montgomery																																1,378,450	2,096,545
Neshoba																																1,045,895	1,131,292
Newton																																4,836	7,535
Noxubee																																1,644,900	1,646,100

**OFFICE OF STATE AID ROAD CONSTRUCTION**

**FY 2010 ANNUAL REPORT**

**STATE AID PROGRAM CONSTRUCTION AND ENGINEERING DISBURSEMENTS BY COUNTY AND SYSTEM FROM JULY 1, 2009 THRU JUNE 30, 2010**

COUNTY	RR CROSSING RRS/STP-C & RR SIGNAL RRS/STP-S		MDOT HIGH PRIORITY MS		HIGH RISK RURAL ROAD PROGRAM		RURAL SECONDARY GRADE RSG/STPG		ACCESS HIGHWAY LAKES AHL		APPALACHIAN ACCESS HIGHWAY APL		PUBLIC LAND HIGHWAYS EFL/PLH		DEFENSE ACCESS AGMC		EMERGENCY RELIEF		CONGESTION RELIEF		LOCAL SYSTEM ROAD PROJECTS		STATE AID PROJECTS SAP		SURFACE TRANSPORTATION RURAL COUNTIES		BRIDGE REPLACEMENT		TOTALS BY COUNTY						
	System	01 & 02	System	19	System	25	System	32	System	34	System	36	System	62 & 63	System	64	System	66	System	68	System	80	System	81	System	82 & 46	System	BR	System	85					
Okaloosa			575,739								92,614																					668,353			
Panola			1,005,608		91,258													64,984						140,884									1,237,750		
Pearl River			1,936,193		45,238																			2,067,977		21,753							4,136,145		
Perry			34,189										28,858												146,707				33,556				243,310		
Pike					811,580																			1,229,971		382			607,581				2,649,413		
Pontiac											228,561													1,396,093									1,624,654		
Prentiss																								445,375									445,375		
Quitman			42,625																																
Rankin																								1,618,601									1,618,601		
Scott																								1,463,902									1,463,902		
Sharkey			270,935										2,350											153,029									426,314		
Shannon			661,560		5,735																			179,681									830,769		
Smith																								236,908									236,908		
Stone																																			
Stunflower																																			
Tallahatchie			323,197		1,200																			501,748										1,065,998	
Tate																								1,392									1,392		
Tippah																								315,698										315,698	
Tishomingo																								1,251,074									1,251,074		
Tunica						161,750																												161,750	
Union																																			
Walsh																																			
Walsh																																			
Warren																																			
Washington																																			
Wayne																																			
Webster																																			
Wilkinson																																			
Winston			459,591																																
Yalobusha																																			
Yazoo																																			
Service Center **																																			
Statewide **																																			
TOTALS BY SYS.			0.00		17,935,056						986,228	0	469,087		0		1,228,192	0		0	356,302		55,898,732		5,193,673		13,299,342		2,683,325			97,504,698			

\* System 81, Testing Charges paid to Calvert on SAP 99 99 and to Burns & Cooley on SAP 99 100

\*\* System 82, Wetland Mitigation; System 85, Bridge Inspection and Bridge Posting Projects

**LOCAL SYSTEM BRIDGE PROGRAM CONSTRUCTION AND ENGINEERING DISBURSEMENTS  
BY COUNTY AND SYSTEM FROM JULY 1, 2009 THRU JUNE 30, 2010**

COUNTY	LOCAL SYSTEM ROAD PROJECTS	LOCAL SYSTEM BRIDGE PROJECTS	TOTALS BY COUNTY
	System 80	System 81	
Adams		77,552	77,552
Alcorn		488,863	488,863
Amite		288,364	288,364
Attala		532,329	532,329
Benton		296,243	296,243
Bolivar		19,757	19,757
Calhoun		199,296	199,296
Carroll		678,564	678,564
Chickasaw		186,965	186,965
Choctaw		178,440	178,440
Claiborne		420,325	420,325
Clarke		17,269	17,269
Clay		226,958	226,958
Coahoma		0	0
Copiah		316,763	316,763
Covington		-4,664	-4,664
DeSoto	1,719	0	1,719
Forrest		342,746	342,746
Franklin		39,164	39,164
George		350	350
Greene		373,523	373,523
Grenada	0	0	0
Hancock		183,615	183,615
Harrison		13,359	13,359
Hinds		721,380	721,380
Holmes		200,076	200,076
Humphreys		334,899	334,899
Issaquena		0	0
Itawamba		28,894	28,894
Jackson		119,944	119,944
Jasper		95,959	95,959
Jefferson		47,389	47,389
Jeff Davis		666,730	666,730
Jones		565,453	565,453
Kemper		11,919	11,919
Lafayette		7,166	7,166

**LOCAL SYSTEM BRIDGE PROGRAM CONSTRUCTION AND ENGINEERING DISBURSEMENTS  
BY COUNTY AND SYSTEM FROM JULY 1, 2009 THRU JUNE 30, 2010**

COUNTY	LOCAL SYSTEM ROAD PROJECTS	LOCAL SYSTEM BRIDGE PROJECTS	TOTALS BY COUNTY
	System 80	System 81	
Marshall		31,771	31,771
Monroe		227,951	227,951
Montgomery		2,941	2,941
Neshoba		331,793	331,793
Newton		184,967	184,967
Noxubee		2,316	2,316
Oktibbeha		115,119	115,119
Panola		498,544	498,544
Pearl River		480,237	480,237
Perry		15,074	15,074
Pike		769,888	769,888
Pontotoc		75,079	75,079
Prentiss		311,671	311,671
Quitman		3,664	3,664
Rankin	0	0	0
Scott		0	0
Sharkey		0	0
Simpson		407,246	407,246
Smith		39,289	39,289
Stone		20,750	20,750
Sunflower		70,700	70,700
Tallahatchie		24,563	24,563
Tate		130,560	130,560
Tippah		137,630	137,630
Tishomingo		125	125
Tunica	91,334	6,515	97,849
Union		167,887	167,887
Walthall		297,527	297,527
Warren		503,735	503,735
Washington		401,512	401,512
Wayne		28,025	28,025
Webster		235,083	235,083
Wilkinson		294,026	294,026
Winston		617,796	617,796
Yalabusha		11,023	11,023
Yazoo		602,716	602,716
<b>TOTALS BY SYSTEM</b>	<b>93,053</b>	<b>17,632,480</b>	<b>17,725,533</b>

This page intentionally left blank.