

OFFICE OF STATE AID ROAD CONSTRUCTION



**Annual Report
Fiscal Year 2014**

OFFICE OF STATE AID ROAD CONSTRUCTION

SUMMARY ANNUAL REPORT

FOR

THE FISCAL YEAR JULY 1, 2013 TO JUNE 30, 2014

TOGETHER WITH

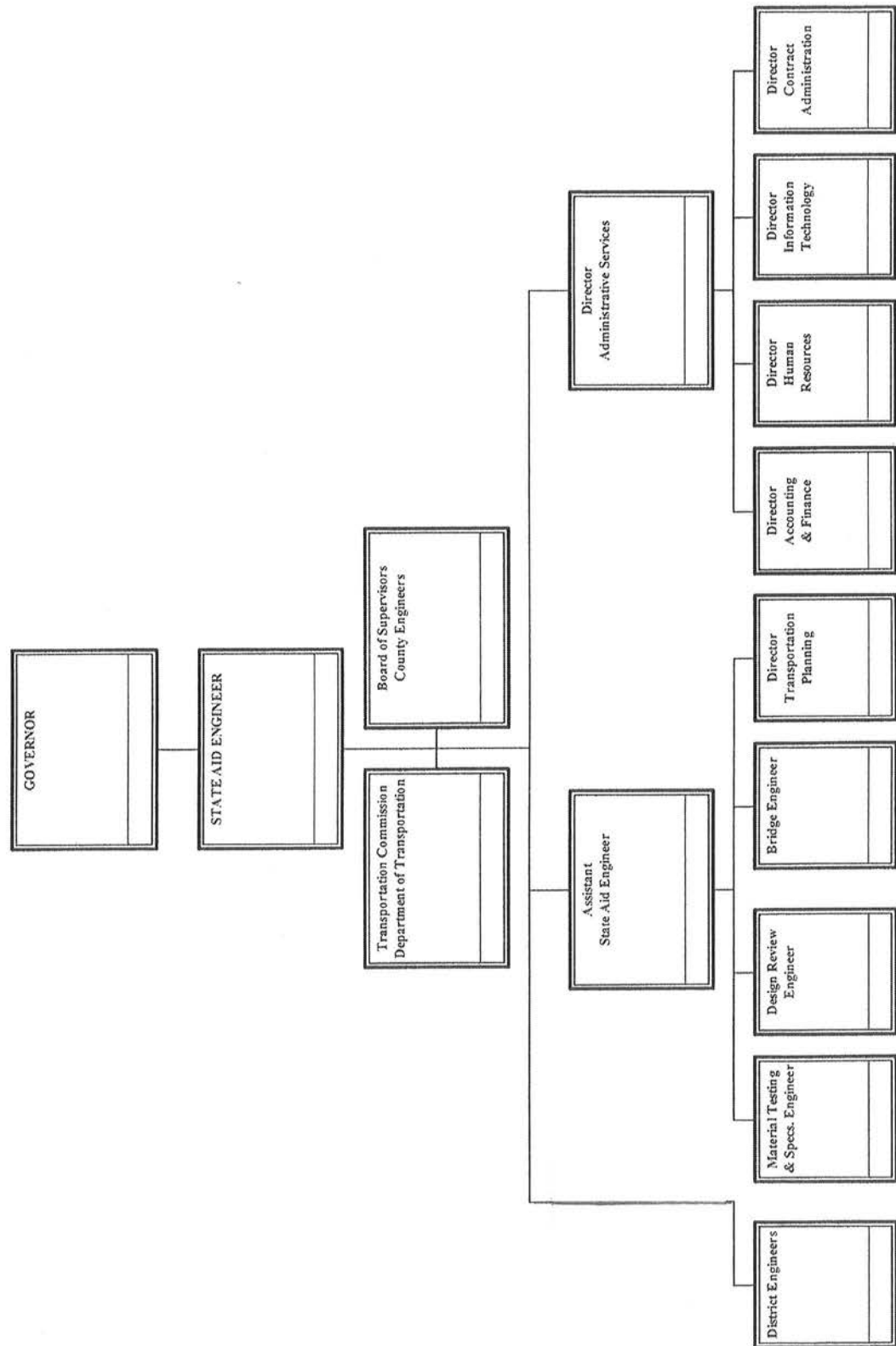
A PROGRESS REPORT FROM THE BEGINNING OF THE

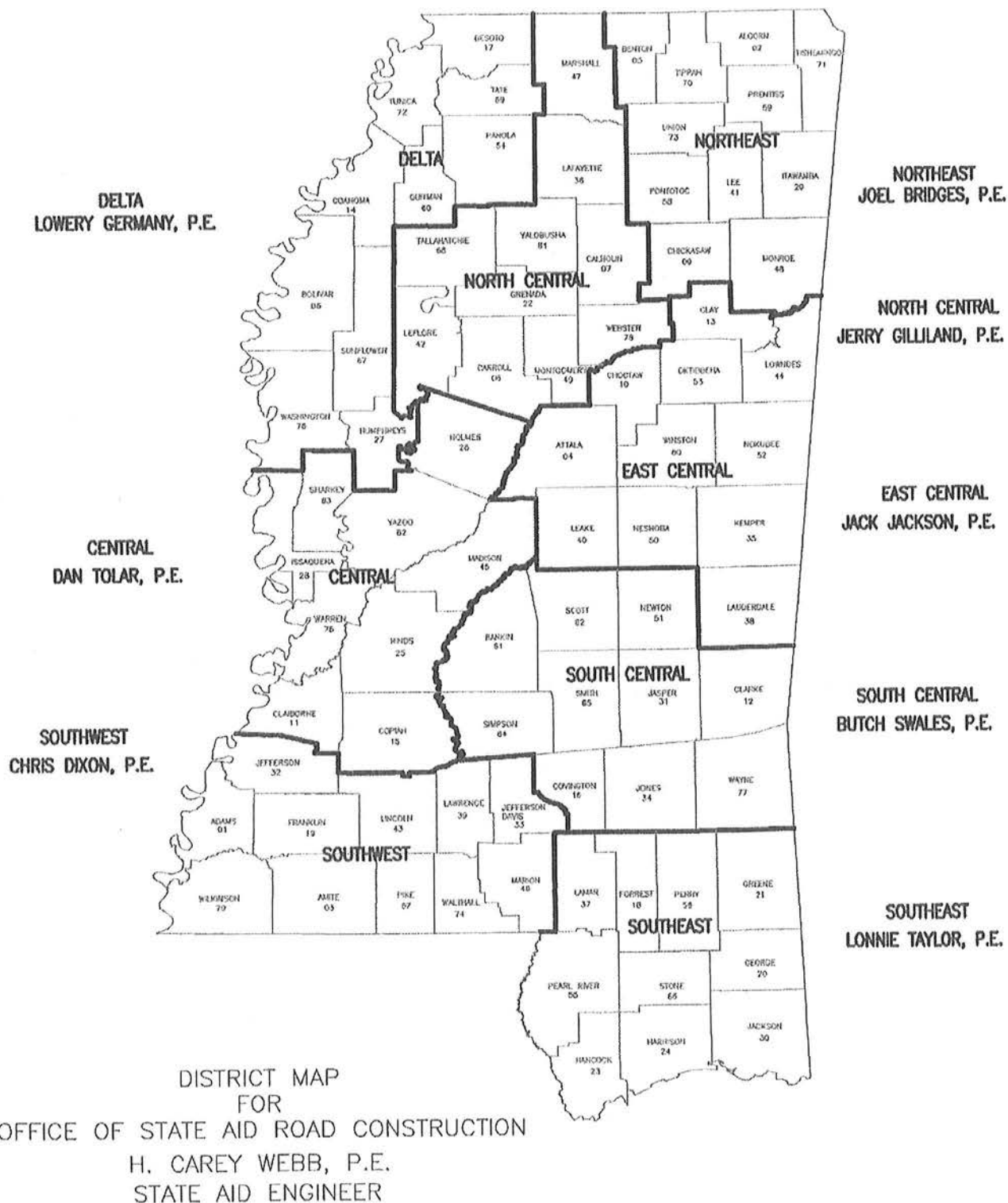
PROGRAM (MAY, 1950) TO JUNE 30, 2014

TABLE OF CONTENTS

	<u>Page</u>
Organizational Chart	1
District Map	2
State Aid Road Program:	
Background of Program	3
Organization of Program	4
Operation of Program	5
Type or Character of Construction and Reseal Programs	6
Progress of Program	7
Revenue Sources and Amounts	12
Receipts and Disbursements	14
Funding Summary	15
Summary of Administrative Expenses	16
Out-of-State Travel to Conventions and Meetings	18
Automobile Expenditures for State-Owned Vehicles	19
Improvements Let to Contract from July 1, 2013 thru June 30, 2014	20
Improvements Made on State Aid System from June, 1950, thru June 30, 2014	22
State Aid Program Construction and Engineering Disbursements from July 1, 2013 thru June 30, 2014	25
Local System Bridge Program Construction and Engineering Disbursements from July 1, 2013, thru June 30, 2014	27

OFFICE OF STATE AID ROAD CONSTRUCTION
ORGANIZATION CHART
Fiscal Year 2014
Annual Report





THE STATE AID ROAD PROGRAM

This report primarily summarizes the operations and progress of the State Aid Program for the fiscal year July 1, 2013 to June 30, 2014.

It is considered appropriate, however, to include an overall background of the program covering the enabling legislation, organization and functions at the State Aid Office and county levels, total funds expended, and total construction improvements accomplished.

An estimate of the program volume anticipated for the fiscal year July 1, 2014 to June 30, 2015 is also included in the report.

BACKGROUND OF PROGRAM

The State Aid Program had its beginning with the passage of Chapter 6, Laws of the Extraordinary Session of 1949 (Section 65-9-[1-33] of the Mississippi Code of 1972). This legislation provided for the creation of a division within the State Highway Department, to be known as the Division of State Aid Road Construction, and to be charged with the responsibility of administering the program at the state level. The 1992 Legislature passed Senate Bill 2763 which created the Mississippi Department of Transportation. Under this bill the State Highway Department became known as the Department of Transportation and the Division of State Aid Road Construction became known as the Office of State Aid Road Construction.

The Enabling Act also provided for a State Aid System, to be composed of the principal collector and distributor routes in the 82 counties, connecting with the State Highway System and other principal county roads to form a network of secondary roads for the state. This system was originally limited to 11,656.4 miles, with each county allocated a percentage of this eligible mileage. The State Legislature at its 1962 Regular Session increased the eligible system mileage to 23,312.8 miles. No change was made in the allocation percentages. In 1994, under House Bill 1302, the allocation percentages were revised and the eligible mileage was increased to 25,857.04 miles. There are 19,036.53 miles actually designated by the Boards and approved by the State Aid Engineer as of June 30, 2014.

The 1994 Regular Session of the Legislature passed House Bill 1302 which included the establishment of a Local System Bridge Replacement and Rehabilitation Program (LSBP), (Section 65-37[1-15] of the Mississippi Code of 1972). The program provides funding for replacement and rehabilitation of deficient bridges maintained by counties or municipalities excluding bridges on the State Aid System, the municipal urban system or the rural major collector system. The Office of State Aid Road Construction is charged with the responsibility of administering the LSBP program under rules and regulations promulgated by the State Aid Engineer.

The 2001 Regular Session of the Legislature passed Senate Bill No. 2318 which established the Local System Road Program (LSRP), (Section 65-18[1-17] of the Mississippi Code of 1972). The program gives the counties the ability to use LSBP and State Aid funds (subject to certain criteria) for the construction, reconstruction and paving of county roads not on the State Aid Road System.

ORGANIZATION OF PROGRAM

Organization of the State Aid Office

The State Aid Enabling Act provides that the Office of State Aid Road Construction be directed by a State Aid Engineer, who is appointed by the Governor for terms of four years each (as amended by the Legislature in 1985). It further provides that the State Aid Engineer hire assistant engineers and other employees necessary to carry out the duties and responsibilities set out in the enabling legislation.

The actual organization of the office began with the appointment of the first State Aid Engineer on May 11, 1950. The office was authorized in 2014 to have an organization for a staff of fifty-two (52) full-time employees, including fourteen (14) Registered Professional Engineers. All positions are approved by the Department of Finance and Administration and the State Personnel Board.

Organization at the County Level

Each Board of Supervisors, as the governing agency of the county, is required by statute to appoint a County Engineer, who is a Registered Professional Engineer, to act for and on behalf of the Board and to administer the engineering functions at the county level, subject to the rules and regulations promulgated by the State Aid Engineer.

The Board is also required to appoint a Local System Bridge Engineer to administer the LSBP program at the county level. The duties of the LSBP Engineer parallel those of the County Engineer and the Board may elect to appoint the County Engineer as the LSBP Engineer.

OPERATION OF THE PROGRAM

Operation of the Program at the County Level

It is the responsibility of the Board of Supervisors to designate the roads to be included in the county's State Aid System; adopt annual construction programs; acquire rights-of-way for State Aid projects; advertise for bids; award contracts; and maintain completed projects after construction.

The County Engineers' responsibilities and duties include, but are not limited to, the following: Assist the Boards of Supervisors in the designation and modification of their State Aid Systems; prepare annual construction programs; make surveys and prepare detailed plans and designs; make field inspections with the State Aid Engineer's representatives; prepare proposals for advertisement for bids; attend lettings at the county level; provide engineering controls (staking, etc.); supervise and inspect construction; prepare estimates for payment to the contractors; and make annual maintenance inspections of completed projects.

Operation of the Program at the State Level

It is the responsibility of the State Aid Engineer and his staff to prepare and adopt uniform design standards and specifications for the construction and maintenance of State Aid projects; approve all additions to the State Aid System; approve all construction programs, plans and specifications; authorize advertisement for bids; concur in the award of the contracts; approve and disburse all payments made from the project fund; approve the final acceptance of completed projects; and make annual and other periodic inspections of completed projects to see that they are properly maintained by the respective Boards of Supervisors.

TYPE OR CHARACTER OF CONSTRUCTION AND RESEAL PROGRAMS

Construction

During the early years of the program (the 1950's), many counties had a great need for bridges and graded roadways with a gravel surface, although many other counties began their State Aid Programs with the construction of hard-surfaced (blacktop) improvements.

It has been the objective throughout the program to construct roads that would connect with the State Highway System and other State Aid routes to form a network of secondary roads. At the present time, all programs now being approved provide for the future completion of a hard-surfaced facility.

The first hard-surfaced State Aid roads, which were completed in the beginning of the program, now need asphalt overlays. It will be noted from the summaries to follow in this report that a total of 3,837.39 miles of hot mix asphalt overlay construction (some surfaces were widened) has been accomplished. This points to the fact that the principal or arterial State Aid roads must now be upgraded to meet increasing traffic volumes and heavier loads. It is anticipated that the need for these betterments on the principal routes will continue to increase.

Maintenance and Reseal Work

The original State Aid Act did not permit the use of State Aid funds for the reseal of existing bituminous surfaces, which work consists of a light application of liquid asphalt and a light application of a fine or seal aggregate to cover the asphalt. Reseal work is regarded as maintenance. The Legislature, during its 1962 Session, amended the law to permit the use of State Aid funds (not to exceed 10%) to reseal hard-surfaced roads which had been constructed through the use of State Aid Funds. This 10% limitation was eliminated during the 1982 Legislative Session.

Bituminous surface treatments need to be resealed on an average of every five or six years to protect the surfaces and the investments made therein. A total of 32,658.79 miles have been resealed, with 3,562.35 miles of this total being contracted during the 2014 fiscal year.

The Legislature, during the 1982 Regular Session, amended Section 65-9-25 of the Mississippi Code of 1972 to permit additional State Aid funds to be used for maintenance, repair and reconstruction of State Aid roads which have been constructed in accordance with State Aid standards and specifications.

The greater majority of State Aid funds in recent years have been used for reseals, pavement maintenance and bridges, with only the remaining funds available for new construction. Some of the older routes that were built in the 1950's and 1960's were constructed to 57,650 pounds. These routes are now being reclaimed to support greater loads and traffic necessary for the agriculture and forestry industries, as well as for the travelling public.

PROGRESS OF PROGRAM**Projects Placed Under Contract from July 1, 2013 thru June 30, 2014**

	#	Miles	Cost
LSBP Projects (Bridges Replaced)	50	4.871	17,717,575
LSRP (LSBP Funds)	2	6.903	1,479,433
LSRP (SA Funds)	3	10.028	1,509,067
Total LSBP and LSRP Projects (LSBP & SA Funds)	55		20,706,075
State Aid & Federal Aid Projects (including Bridge Inspections)			
Construction			
Grading, Drainage Structures & Paving		174.906	
Grading, Drainage Structures & Gravel Surface		18.235	
Bridges		21.706	
Asphalt Overlay Construction		707.786	
Total Construction Improvements	58	922.633	52,727,248
Reseal & Maintenance Projects (Previously Paved State Aid Routes)	40	3,556.404	32,530,600
Total State Aid & Federal Aid Project (including Bridge Inspections)	98		85,257,848

NOTE: The above totals, by Counties, are included elsewhere in this report.

Amounts and Types of Funds Contracted:

State Aid	47,569,700
County	596,900
Federal Funds:	
MDOT Funds	0
Surface Transportation	9,542,240
DECD/Federal Match	0
Appalachian Access	3,772,096
Bridge Replacement	14,970,200
Bridge Inspection	5,540,000
Eastern Federal Land Highway (EFLH)	0
Emergency Relief	36,192
High Priority	869,920
High Risk Rural Road (HRRRP)	1,462,400
MMEIA/MDA	423,200
National Corridor Planning & Development (NCPD)	0
Public Lands Highway (PLH)	0
Transportation-Community-System Preservation (TCSP)	475,000
Total Funds Contracted	85,257,848
Grand Total all Projects	105,963,923

**Projects Completed and/or Placed Under Contract from Beginning of
Program in June, 1950, thru June 30, 2014**

	#	Miles	Cost
LSBP Projects (Bridges Replaced)	1,135	188.109	344,718,928
LSRP (LSBP Funds)	10	27.866	8,030,433
LSRP (SA Funds)	22	28.296	9,264,227
Total LSBP and LSRP Projects (LSBP & SA Funds)	1,167		362,013,588
State Aid & Federal Aid Project (including Bridge Inspections) Construction			
Grading, Drainage Structures & Paving		11,108.808	
Grading, Drainage Structures & Gravel Surface		848.795	
Bridges		130.086	
Asphalt Overlay Construction		3,805.416	
Total Construction Improvements	8,662	15,893.105	2,317,851,784
Reseal & Maintenance Projects (Previously Paved State Aid Routes)	1,715	32,652.839	744,931,908
Total State Aid & Federal Aid Project (including Bridge Inspections)	10,377		3,062,783,692
Grand Totals all Projects	11,544		3,424,797,280

NOTE: The above totals, by Counties, are included elsewhere in this report.

Projects in Contract Stage as of June 30, 2014

	#	Miles	Cost
LSBP Projects	73	7.678	26,850,580
LSRP (LSBP Funds)	1	4.627	746,300
LSRP (SA Funds)	3	4.075	1,372,000
Total LSBP and LSRP Projects (LSBP & SA Funds)	77		28,968,880
State Aid Projects (State Aid Funds):			
Construction	29	21	17,533,800
Maintenance	34	271	30,944,764
Reseal	27	663	36,216,000
Federal Aid Projects (State Aid , Federal & LSBP Funds):			
Surface Transportation	22	131	16,468,400
STPG	3	31	1,118,600
Appalachian Access	2	1	479,756
Bridge Replacement	36	11	41,204,002
Bridge Inspection	7	0	16,640,428
Eastern Federal Land Highway (EFLH)	1	0	430,400
Emergency Relief	3	4	2,605,359
High Priority	24	101	46,144,641
High Risk Rural Road (HRRRP)	6	46	2,998,748
Public Land Highways	1	7	2,909,603
Total State Aid & Federal Aid Projects	195	1,286.839	215,694,501
Grand Totals all Projects	272	1,303.219	244,663,381

Estimated Program Volume for July 1, 2013, thru June 30, 2014

It is difficult to estimate the miles of construction and reseal improvements that will be let to contract during the coming fiscal year. However, the State Aid Road Construction Program has the potential for a \$100 to \$200 million total program for the fiscal year 2014. In addition, we expect to place under contract \$20 million in LSBP Funds.

As of June 30, 2014, programs (proposed improvements) have been adopted by the Boards of Supervisors and approved by the State Aid Engineer for the following work:

Type of Projects	Number of Projects	Estimated Cost
Total LSBP (System 81)	144	\$53,015,259
Total LSRP (LSBP Funds)(System 80)	4	\$2,510,971
Total LSRP (SA Funds)(System 80)	1	\$154,900
State Aid: (State Aid Funds Only)		
Construction (System 81)	38	\$20,417,815
Maintenance (System 81)	36	\$16,811,849
Reseal (System 81)	5	\$4,871,326
State Aid & Federal Aid Funds		
STP (System 82)	79	\$65,349,432
STPG (System 32)	1	\$497,757
APL (System 36)	4	\$1,971,948
BR (System 85)	45	\$54,521,043
EFLH (System 63)	7	\$3,432,018
ER (System 66)	8	\$604,128
HRRRP (System 25)	7	\$2,222,235
MS, FBD (System 19)	31	\$122,145,681
PLH (System 62)	3	\$1,901,445
GRAND TOTAL	413	\$350,427,807
Total State Aid	264	\$294,746,677

The Boards of Supervisors began the new four-year term on January 1, 2012, and have available for planning and expenditure purposes 90% of the State Aid revenue that will accrue during the 2012-2015 period.

Bridge Replacement and Rehabilitation is a major Federal program that has helped the counties to improve the seriously deficient condition of many State Aid and Federal Aid System bridges. Historically, the Mississippi Department of Transportation transferred approximately 30% of the Bridge Replacement funds that are apportioned to the State Aid program for replacement of deficient bridges on county roads. In fiscal year 2014, \$17,495,459 was authorized. State Aid is projected to receive for fiscal year 2015, \$15,000,000 to be transferred by Mississippi Department of Transportation.

The cost per mile for the construction of projects, embracing grading, drainage structures, small bridges, base and bituminous surfacing, ranges from \$610,925.77 per mile to \$4,935,643.56 per mile, depending on the soil conditions, availability of construction materials and terrain. The average cost of construction projects in fiscal year 2014 was \$2,708,214.00 per mile.

Projects involving large bridges with long spans and/or projects requiring higher design standards because of heavy traffic demands or other special conditions should not be considered in these cost ranges.

Liquid seal (resealing) projects range from \$13,523.32 to \$108,615.05 per mile, depending on the location and on the leveling and base course corrections needed. The average cost of reseal projects in fiscal year 2014 was \$43,200.82 per mile.

REVENUE SOURCES AND AMOUNTS

Revenues for the State Aid Program are derived from the following state and federal sources:

State Sources:

- (a) Section 27-65-75, Mississippi Code of 1972 (as amended by the 1994 and 1999 Regular Sessions of the Legislature), provides for a minimum diversion of \$48,000,000 or 23.25%, whichever is greater, from gasoline, diesel fuel or kerosene tax revenue and \$3,000,000 from sales tax collections into the Office of State Aid Road Construction special fund in each fiscal year for the State Aid program.

State Aid funds have been constant since 1995, although construction costs have risen 40%, resulting in counties having a difficult time maintaining their State Aid system to keep up with the increase in traffic and weight of loads. If roads are not properly maintained as they get older, it will be costlier to keep these roads at a level of satisfactory maintenance to ensure safe and efficient conveyance of goods and services.

- (b) Mississippi Code of 1972, Section 65-37-13 (c) provided that the Local System Bridge Replacement and Rehabilitation Fund be appropriated \$20 million from the General Fund, if the General Fund revenues reflect a growth of 2% or more for the succeeding fiscal year. Mississippi Code Section 65-37-13 also extended the Local System Bridge Replacement and Rehabilitation Program through 2016 and provides for LSBP funds to be issued to each county as advanced credits. Advanced credits allow each county to plan bridge repair or replacement projects and to utilize LSBP funds on hand to the fullest practicable extent at all times. These advanced credits are based upon anticipated revenue and can be issued by the county board term, which is four years. On January 1, 2012 advanced credits were issued at \$20 million per year for four fiscal years ending December 31, 2015.

In Fiscal Years 2004 through 2012 the LSBP program was funded with bond proceeds. In Fiscal Year 2013 the LSBP program received no funding and \$20 million of Budget Contingency Funds in Fiscal Year 2014. Senate Bill 2001, First Extraordinary Session 2014 provided \$20 million of Capital Expense Funds to be appropriated for the LSBP Program.

The LSBP fund earned interest on bond fund treasury accounts in the amount of \$262,933 for FY 2014.

- (c) Section 65-9-17 authorizes the counties to use County funds to supplement State Aid funds for the construction of State Aid roads.

- (d) The Economic Development Highway Act (Code Section 65-4-1) authorizes the Mississippi Development Authority (MDA) to assist political subdivisions with Highway Projects which encourage private companies to engage in high economic benefit projects within their area. These funds are made available to the county(ies) or municipality(ies) on an individual project basis and are administered in accordance with guidelines established by the MDA. The Office of State Aid is responsible for administering MDA projects that are not on the State Highway System.

Federal Sources (Regular):

MDOT provides a portion of the Surface Transportation Program funds under MAP-21, which includes Bridge Replacement funds made available to the State of Mississippi by the Federal Government to the counties through the State Aid Office.

Federal Sources (Special):

- (a) Emergency Relief funds are made available by the Federal Government to the counties through the State Aid Office on an individual project basis, to reconstruct roads and bridges on Federal Aid highways damaged or destroyed by floods, hurricanes, catastrophic failure and other disasters.
- (b) Appalachian Access Highway funds are made available to the counties in the twenty-four county Appalachian area in northeast Mississippi on an individual project basis. These projects are administered by the State Aid Office on an individual project basis through the Federal Highway Administration.
- (c) Other funds earmarked by Congress for selected counties.

RECEIPTS AND DISBURSEMENTS

	Actual FY Ending 6/30/2014	Estimated FY Ending 6/30/2015	Estimated FY Ending 6/30/2016
DISBURSEMENTS			
<u>Construction of Highways</u>			
State Aid Projects - General Funds	0	32,000,000	32,000,000
State Aid Projects - Special Funds	67,658,149	79,809,157	79,809,157
Federal Aid Projects	54,377,821	70,000,000	70,000,000
Local System Bridge Program	17,009,739	26,954,632	20,000,000
Budget Contingency Fund	0	20,000,000	0
Administrative	4,908,450	5,049,541	5,168,068
Total Expenditures-OSARC	143,954,159	233,813,330	206,977,225
RECEIPTS			
Gasoline Tax(Section 27-65-75)	48,242,324	57,000,000	57,000,000
Sales Tax(Section 27-65-75)	3,000,000	3,000,000	3,000,000
County Contributions	1,645,387	19,399,157	19,399,157
Misc State Aid Revenue	32,586	60,000	60,000
Interest on Investments	262,933	350,000	350,000
Administrative	3,274,808	5,049,541	5,168,068
General Fund	0	32,000,000	52,000,000
Budget Contingency Fund (LSBP)	20,000,000	0	0
Capital Expense Fund (LSBP)	0	20,000,000	0
Total State Revenue-OSARC	76,458,038	136,858,698	136,977,225
<u>Federal Funds(Allocations)Reimbursements</u>			
FHWA Reimbursements	43,135,899	55,000,000	55,000,000
Federal Aid Matching Requirements	5,480,920	15,000,000	15,000,000
Total Federal Funds-OSARC	48,616,819	70,000,000	70,000,000
Total Revenue	125,074,857	206,858,698	206,977,225
Beginning Funds Balance	104,068,282	85,188,980	78,234,348
Ending Funds Balance	85,188,980	78,234,348	78,234,348
Total Available	143,954,159	213,813,330	206,977,225

FUNDING SUMMARY**FUNDS MADE AVAILABLE DURING FY 2014**

Sources:

Gasoline Tax (Section 27-65-75)	51,517,132	
Sales Tax (Section 27-65-75)	3,000,000	
County Contributions	1,645,387	
Federal Aid Matching Requirements	5,480,920	
Interest on Investments	262,933	
Miscellaneous Revenue	32,586	
Administrative Transfer from Counties	5,406,816	
Budget Contingency Funds (LSBP)	20,000,000	
Federal Funds--		
FHWA Reimbursements	43,135,899	
Total Federal Funds	43,135,899	
Total Fiscal Year Revenue		130,481,673
Less: Requirements for Administrative Expenses		(5,406,816)
Total Funds Made Available for Construction During FY 2014		125,074,857

PROJECTION OF REVENUE FOR FY 2015 AND FY 2016

Sources:

	FY 2015	FY 2016
General Funds	32,000,000	32,000,000
Gasoline Tax (Section 27-65-75)	57,000,000	57,000,000
Sales Tax (Section 27-65-75)	3,000,000	3,000,000
County Contributions	19,399,157	19,399,157
Federal Aid Matching Requirements	55,000,000	55,000,000
Miscellaneous State Aid Revenue	60,000	60,000
Local System Bridge Funds	20,000,000	20,000,000
Interest on Investments	350,000	350,000
Administrative Transfer from Counties	5,049,541	5,168,068
Federal Funds - FHWA Reimbursements	15,000,000	15,000,000
Total Fiscal Year Revenue	206,858,698	206,977,225
Less: Requirements for Administrative Expenses	(5,049,541)	(5,168,068)
Total Revenue Available for Construction	201,809,157	201,809,157

SUMMARY OF ADMINISTRATIVE EXPENSES

Salaries, Wages and Fringe Benefits:

Salaries and Wages	2,522,129	
Personal Leave Pay	277	
Retirement Matching	397,279	
Social Security Matching	183,485	
Workers' Compensation	7,696	
Group Health Insurance	212,176	
Group Life Insurance	4,629	
Unemployment Insurance Tax	5,343	
Cafeteria Plan	3,145	3,336,158

Travel:

In-State	31,065	
Out-of-State	30,593	61,657

Contractual Services:

Tuition & Employee Training	14,370	
Liability Insurance Contributions	9,397	
Postage	10,000	
Freight	1,168	
Rents	17,182	
Repairs to Motor Vehicles	3,107	
Consultant Fees	2,580	
Engineering Services	93,495	
SAAS	6,076	
MMRS	6,991	
Audit Department	116,656	
State Personnel Board	7,398	
Temporary Employment Fees	11,481	
Fidelity Bonds	5,262	
Other Fees & Services	200	305,362

Information Technology:

IS Professional Fees - Outside Vendor	208,126	
ITS Fees	2,174	
Service Fees to State Computer Center	1,353	
Software Acquisition	30,771	
Network Charges	12,463	
Telephone Fees	16,670	
Long Distance	433	
Usage Time Cellular Telephones	13,571	285,560

SUMMARY OF ADMINISTRATIVE EXPENSES**Commodities:**

Printing and Binding	142	
Duplication Supplies	1,592	
Office Supplies and Materials	4,871	
Paper Supplies	1,596	
Maps and Manuals	295	
Office Equipment	11,216	
Fuel Card - Gas, Oils, Greases, Etc.	8,322	
Tires and Tubes - Auto	2,249	
Prior Year Expense	38	
Batteries & Accessories for Vehicles	5,973	
Other Miscellaneous Expenses	10,886	
Procurement Card Purchases	2,681	49,860

Capital Outlay:

Office Furniture & Fixtures	14,567	
Mainframe Systems Equipment	150,465	165,032

Total4,203,629

OUT-OF-STATE TRAVEL TO CONVENTIONS AND MEETINGS

Employee's Name	Travel Destination	Travel Meeting Title	Total Amount
Bond, John Ferris Jr	Charleston, SC	2013 Southern Transportation Civil Rights Symposium	\$ 1,825.54
Bond, John Ferris Jr	Phoenix, AZ	AASHTO National Civil Rights Symposium	\$ 1,702.41
Cooper, Kimberly Renee	Charleston, SC	2013 Southern Transportation Civil Rights Symposium	\$ 2,032.07
Cooper, Kimberly Renee	Phoenix, AZ	AASHTO National Civil Rights Symposium	\$ 1,713.81
Davis, Charles W.	Asheville, NC	SASHTO Conference	\$ 2,136.56
Germany, Lowery Q.	Denver, CO	AASHTO Annual Meeting	\$ 1,496.31
Gilliland, Jerry G.	Asheville, NC	SASHTO Conference	\$ 1,582.21
Glover, Lanny B.	Denver, CO	AASHTO Annual Meeting	\$ 1,304.19
Jordan, Daniel G.	Charleston, SC	2013 Southern Transportation Civil Rights Symposium	\$ 1,564.94
Jordan, Daniel G.	Phoenix, AZ	AASHTO National Civil Rights Symposium	\$ 1,761.15
Jordan, Daniel G.	Knoxville, TN	AGA Fall Leadership Seminar	\$ 875.35
Maher, James Earl Jr	Knoxville, TN	AGA Fall Leadership Seminar	\$ 172.92
Mohr, Sandra Lynn	Charleston, SC	2013 Southern Transportation Civil Rights Symposium	\$ 1,983.02
Mohr, Sandra Lynn	Phoenix, AZ	AASHTO National Civil Rights Symposium	\$ 1,701.77
Stuart, Brandi Westbrook	Charleston, SC	2013 Southern Transportation Civil Rights Symposium	\$ 1,868.11
Webb, H. Carey	Denver, CO	AASHTO Annual Meeting	\$ 1,282.86
Webb, H. Carey	West Helena, AR	MS Indian Mound Trail Project	\$ 121.99
Webb, H. Carey	Asheville, NC	SASHTO Conference	\$ 919.31
Wells, Graham	Arlington, VA	NHI Bridge Safety Inspection Course	\$ 4,548.07
GRAND TOTAL			<u><u>\$ 30,592.59</u></u>

AUTOMOBILE EXPENDITURES FOR STATE-OWNED VEHICLES

Make/Model	Year	Tag #	Cost	Use	Annual Mileage	Total Mileage
Nissan/Titan	2009	G51350	\$ 23,756.00	Bridge Division Pool Car	8,140	49,523
Nissan/Titan	2009	G51349	\$ 23,756.00	Bridge Division Pool Car	5,837	51,102
Chevrolet/Impala	2010	G52756	\$ 17,291.00	Administrative Pool Car	8,025	94,485
Chevrolet/Impala	2011	G57409	\$ 17,291.00	State Aid Engineer	9,014	76,147
Ford/F150	2011	G57577	\$ 20,389.00	East Central District Engineer	31,839	100,425
Chevrolet/Impala	2012	G60540	\$ 17,555.00	Administrative Pool Car	7,018	44,308
Dodge/Ram	2014	G65457	\$ 21,495.00	Central District Engineer	7,688	7,688
Dodge/Ram	2014	G65458	\$ 21,495.00	Southwest District Engineer	17,187	17,187
Dodge/Ram	2014	G65455	\$ 21,495.00	South Central District Engineer	12,458	12,458
Dodge/Ram	2014	G65461	\$ 21,495.00	Southeast District Engineer	13,236	13,236
Dodge/Ram	2014	G65456	\$ 21,495.00	Northeast District Engineer	21,259	21,259
Dodge/Ram	2014	G65459	\$ 21,495.00	Delta District Engineer	12,814	12,814
Dodge/Ram	2014	G65460	\$ 21,495.00	North Central District Engineer	16,650	16,650

IMPROVEMENTS LET TO CONTRACT FROM JULY 1, 2013 THRU JUNE 30, 2014

	Construction Miles and Cost							Reseal & Maintenance	
	Grading &		Bridges		Resur-	Total			
County	Surfacing	Gravel	#	Miles	facing	Miles	Cost	Miles	Cost
Adams	1.249	0.620	-	-	-	1.869	2,682,300	22.693	833,300
Alcorn	5.231	0.374	8	0.328	-	5.933	366,400	60.865	323,100
Amite	1.638	-	5	0.403	41.678	43.719	-	38.017	-
Attala	0.723	0.501	11	0.432	34.486	36.142	1,929,700	67.646	936,700
Benton	3.110	0.138	7	0.438	-	3.686	-	30.279	-
Bolivar	4.618	0.164	3	0.089	-	4.871	-	40.859	-
Calhoun	0.146	0.231	3	0.052	-	0.429	-	62.796	268,300
Carroll	0.161	0.218	6	0.487	46.856	47.722	2,511,500	46.454	437,800
Chickasaw	4.977	0.036	2	0.117	-	5.130	2,225,300	18.061	-
Choctaw	0.219	0.163	4	0.127	-	0.509	36,192	52.882	-
Claiborne	1.636	-	-	-	5.180	6.816	-	22.698	-
Clarke	0.532	0.072	4	0.139	-	0.743	-	43.676	-
Clay	0.166	0.530	6	0.500	16.828	18.024	-	33.534	-
Coahoma	0.605	-	-	-	7.604	8.209	-	24.293	-
Copiah	0.199	0.376	6	0.621	62.473	63.669	-	-	-
Covington	1.492	0.237	8	0.205	3.910	5.844	1,713,000	26.633	-
DeSoto	0.738	-	3	0.033	6.859	7.630	458,000	7.029	1,546,400
Forrest	0.096	-	1	0.017	11.594	11.707	798,300	43.941	-
Franklin	4.564	0.417	4	0.423	-	5.404	-	41.088	-
George	0.883	0.089	4	0.111	-	1.083	1,043,300	41.448	123,000
Greene	-	0.055	3	0.181	18.989	19.225	-	0.318	79,800
Grenada	0.964	-	-	-	-	0.964	-	64.232	-
Hancock	-	-	1	0.123	31.054	31.177	-	6.550	-
Harrison	0.330	0.093	8	0.169	19.984	20.576	1,007,900	32.228	-
Hinds	1.028	0.128	11	0.494	17.678	19.328	1,060,500	89.588	2,157,600
Holmes	0.052	0.160	3	0.300	34.744	35.256	441,900	0.074	-
Humphreys	4.069	0.018	3	0.527	3.558	8.172	-	0.124	696,600
Issaquena	-	-	-	-	-	-	-	5.003	-
Itawamba	0.400	-	8	0.409	6.649	7.458	1,942,800	71.947	1,228,900
Jackson	0.223	-	2	0.054	-	0.277	1,562,800	20.866	-
Jasper	2.870	0.117	8	0.186	-	3.173	-	0.046	-
Jefferson	0.915	0.331	6	0.193	2.443	3.882	1,649,800	39.899	-
Jefferson Davis	0.561	-	3	0.077	-	0.638	-	105.093	179,000
Jones	1.060	-	6	0.402	10.106	11.568	-	196.627	-
Kemper	1.746	1.982	5	0.131	-	3.859	604,600	86.654	1,700,700
Lafayette	1.327	0.392	12	1.587	4.392	7.698	-	18.294	497,100
Lamar	0.184	-	2	0.095	24.891	25.170	386,300	31.219	922,500
Lauderdale	2.004	-	10	0.635	-	2.639	-	4.543	2,414,500
Lawrence	5.659	0.237	10	1.174	7.549	14.619	614,300	56.627	167,700
Leake	0.117	-	2	0.487	22.700	23.304	-	54.436	-
Lee	1.890	-	5	0.537	-	2.427	810,400	0.454	2,869,500
Leflore	5.004	-	-	-	2.940	7.944	-	50.830	-
Lincoln	11.229	0.467	6	0.125	1.335	13.156	-	134.518	-
Lowndes	10.015	0.525	3	0.052	0.470	11.062	1,351,500	86.867	-
Madison	0.496	0.166	4	0.080	5.147	5.889	-	8.022	-
Marion	2.159	0.238	1	0.045	-	2.442	2,119,600	0.179	-

IMPROVEMENTS LET TO CONTRACT FROM JULY 1, 2013 THRU JUNE 30, 2014

	Construction Miles and Cost							Reseal & Maintenance	
	Grading &		Bridges		Resur-	Total			
County	Surfacing	Gravel	#	Miles	facing	Miles	Cost	Miles	Cost
Marshall	7.872	0.252	4	0.120	2.451	10.695	-	97.860	597,800
Monroe	0.920	0.141	4	0.180	10.945	12.186	-	48.105	2,680,000
Montgomery	-	0.529	5	0.349	2.069	2.947	1,055,800	6.642	-
Neshoba	3.078	-	4	0.124	-	3.202	-	55.328	-
Newton	0.342	0.072	5	0.114	-	0.528	454,000	62.688	-
Noxubee	-	0.110	1	0.026	-	0.136	1,842,600	47.010	-
Oktibbeha	2.929	-	-	-	9.509	12.438	2,171,800	67.855	-
Panola	0.320	0.174	9	0.645	2.524	3.663	618,000	73.441	-
Pearl River	1.507	0.072	13	0.425	5.109	7.113	-	118.776	1,777,000
Perry	9.747	0.070	7	0.208	-	10.025	1,201,300	34.691	-
Pike	2.984	0.115	5	0.467	-	3.566	2,867,400	75.480	-
Pontotoc	1.254	0.651	4	0.120	-	2.025	-	24.660	-
Prentiss	1.010	-	6	0.215	7.258	8.483	635,456	14.357	-
Quitman	0.546	0.030	2	0.210	9.151	9.937	1,313,600	-	-
Rankin	6.297	-	-	-	73.595	79.892	-	-	-
Scott	0.196	0.612	4	0.753	-	1.561	1,653,200	65.403	1,957,400
Sharkey	-	0.151	1	0.018	3.854	4.023	-	7.038	-
Simpson	8.264	0.245	4	0.405	1.893	10.807	747,200	75.056	-
Smith	1.359	0.670	7	0.147	-	2.176	-	36.372	-
Stone	2.157	-	4	0.050	7.263	9.470	639,300	54.964	-
Sunflower	4.395	0.014	4	0.359	3.612	8.380	-	50.667	-
Tallahatchie	6.174	0.151	2	0.228	3.650	10.203	-	11.797	-
Tate	0.126	0.145	7	0.249	-	0.520	-	11.729	-
Tippah	1.567	0.118	5	0.433	-	2.118	1,504,500	60.862	-
Tishomingo	0.032	0.030	4	0.040	3.050	3.152	785,100	43.319	914,900
Tunica	0.052	-	2	0.047	-	0.099	-	9.221	1,720,400
Union	0.169	-	2	0.156	-	0.325	-	64.214	1,580,200
Walthall	0.059	0.092	5	0.357	59.710	60.218	1,621,400	80.810	202,600
Warren	3.114	-	6	0.650	-	3.764	-	6.128	699,000
Washington	0.904	0.360	12	0.601	10.246	12.111	-	-	-
Wayne	0.087	0.155	2	0.025	67.704	67.971	-	55.999	-
Webster	0.354	0.333	7	0.295	-	0.982	-	66.224	-
Wilkinson	0.096	0.480	4	0.223	-	0.799	419,800	49.917	-
Winston	7.511	3.081	9	0.281	4.066	14.939	1,380,900	59.516	-
Yalobusha	0.172	0.081	4	0.389	-	0.642	167,400	35.563	1,208,600
Yazoo	12.027	0.226	4	0.212	-	12.465	-	100.530	11,547,800
Statewide	-	-	-	-			5,540,000		-
Totals	174.906	18.235	375	21.705	739.756	954.603	53,935,148	3,562.352	42,268,200

IMPROVEMENTS MADE ON THE STATE AID SYSTEM FROM JUNE 30, 1950, THRU JUNE 30, 2014

County	State Aid Mileage			State Aid Improvements							Funds Expended or Obligated		
	Total Allocation	Actually Designated	Paved Mileage	Grading & Grav. Surf.	Brs. Structural		Total Actual Miles	Overlay or Resurf.	Total Construction	Surfacing Reseal/Maint.	To Contact		
					#	Miles					Construction	Reseal/Mant.	
Adams	244.42	192.6	48.436	1.362	19	0.604	50.402	37.698	88.100	139.828	22,429,940	3,786,056	
Alcorn	280.16	185.1	117.431	2.162	56	1.285	120.878	27.107	147.985	323.697	23,440,176	9,482,421	
Amite	398.65	245.35	191.143	3.889	56	1.742	196.774	96.894	293.668	622.345	33,242,070	9,845,745	
Attala	345.03	250.85	145.107	9.208	73	1.952	156.267	34.486	190.753	602.856	34,043,606	10,798,298	
Benton	205.57	168.6	105.135	9.702	39	1.047	115.884	-	115.884	201.347	18,130,936	4,113,102	
Bolivar	339.41	202.7	105.969	7.281	49	0.963	114.213	80.137	194.350	248.346	29,908,454	7,134,849	
Calhoun	321.72	234.12	129.343	15.969	94	1.684	146.996	47.753	194.749	518.875	31,166,853	6,562,283	
Carroll	300.74	216.15	110.251	13.243	72	1.906	125.400	92.912	218.312	347.281	25,223,735	8,988,212	
Chickasaw	247.19	194.08	109.947	15.389	67	1.434	126.770	0.463	127.233	325.723	22,320,158	5,873,093	
Choctaw	235.68	199.7	111.992	30.632	87	1.602	144.226	0.225	144.451	380.416	21,227,658	8,826,006	
Claiborne	240.12	158.48	94.272	10.000	25	1.202	105.474	91.931	197.405	244.529	23,981,088	6,513,477	
Clarke	370.67	286.9	206.547	0.934	58	1.658	209.139	32.970	242.109	713.510	29,557,629	10,555,958	
Clay	223.9	164.3	97.134	10.255	70	2.003	109.392	47.358	156.750	311.478	34,044,534	7,462,347	
Coahoma	340.37	216.1	151.098	1.345	27	0.793	153.236	167.866	321.102	366.866	26,785,668	5,084,101	
Copiah	442.94	387.7	240.538	4.791	112	3.275	248.604	85.778	334.382	645.405	45,071,937	10,616,275	
Covington	289.12	223.8	147.679	2.581	81	2.533	152.793	13.904	166.697	587.549	28,326,013	9,402,451	
DeSoto	345.17	197.4	100.545	20.603	51	0.981	122.129	36.685	158.814	168.385	33,824,057	9,778,975	
Forrest	319.89	261.2	63.903	5.608	71	2.122	71.633	85.944	157.577	354.508	27,109,490	9,338,005	
Franklin	398.65	225.88	163.139	1.397	43	2.019	166.555	37.215	203.770	453.142	31,180,424	8,775,854	
George	258.73	177.3	124.832	5.299	51	1.224	131.355	11.302	142.657	335.003	22,653,956	9,349,287	
Greene	412.64	290.2	207.278	9.604	93	2.268	219.150	58.250	277.400	458.183	38,845,034	8,577,480	
Grenada	214.27	165.28	102.065	1.914	31	0.740	104.719	25.741	130.460	459.199	32,551,536	7,410,014	
Hancock	251.92	163.2	96.943	10.139	42	0.798	107.880	51.455	159.335	189.897	38,022,365	7,575,616	
Harrison	414.63	264.6	134.052	1.964	55	2.053	138.069	42.171	180.240	414.321	48,093,247	9,591,610	
Hinds	440.95	359	248.550	1.632	47	1.778	251.960	105.198	357.158	331.789	46,597,089	9,182,229	
Holmes	445.27	322.4	222.537	18.541	63	1.710	242.788	100.767	343.555	679.125	35,678,821	11,426,224	
Humphreys	223.26	204.9	115.086	16.243	35	1.103	132.432	10.701	143.133	253.559	17,282,596	7,548,969	
Issaquena	128.89	91.1	36.131	21.852	7	0.161	58.144	28.007	86.151	105.077	6,572,316	4,734,432	

IMPROVEMENTS MADE ON THE STATE AID SYSTEM FROM JUNE 30, 1950, THRU JUNE 30, 2014

County	State Aid Mileage			State Aid Improvements							Funds Expended or Obligated		
	Total Allocation	Actually Designated	Paved Mileage	Grading & Grav. Surf.	Brs. Structural		Total Actual Miles	Overlay or Resurf.	Total Construction	Surfacing Reseal/Maint.	To Contact		
					#	Miles					Construction	Reseal/Mant.	
Itawamba	326.98	222.35	161.351	6.298	87	2.102	169.751	20.088	189.839	403.828	31,357,043	8,398,368	
Jackson	351.66	146.3	60.416	6.723	30	1.432	68.571	7.893	76.464	108.856	29,653,892	7,687,410	
Jasper	307.73	291.4	175.487	4.395	82	2.036	181.918	26.025	207.943	387.182	30,031,515	6,713,250	
Jefferson	251.58	162.83	75.721	6.676	50	1.241	83.638	23.699	107.337	315.891	18,274,018	8,299,677	
Jefferson Davis	221.47	189.39	113.336	3.829	57	1.310	118.475	46.999	165.474	464.987	20,679,154	7,746,370	
Jones	502.2	329.3	179.653	30.507	82	2.660	212.820	59.545	272.365	718.951	40,773,961	12,813,857	
Kemper	382.33	288.35	206.962	32.665	90	1.687	241.314	29.968	271.282	447.422	32,137,180	8,317,448	
Lafayette	341.95	186.25	109.343	8.802	109	3.464	121.609	35.438	157.047	355.393	30,944,699	8,050,353	
Lamar	318.1	207.78	110.567	1.474	53	1.615	113.656	112.341	225.997	508.670	30,181,338	10,934,240	
Lauderdale	439.39	412.3	248.922	1.619	71	1.942	252.483	96.368	348.851	466.253	30,411,749	10,873,598	
Lawrence	261.1	207.72	125.919	8.414	68	2.581	136.914	73.548	210.462	456.453	52,276,919	7,347,771	
Leake	296.54	224.52	146.905	11.073	62	1.942	159.920	38.697	198.617	387.453	30,678,879	6,597,869	
Lee	343.24	194.4	109.705	17.876	76	1.977	129.558	19.648	149.206	357.368	32,802,040	15,103,546	
Leflore	311.14	275.9	139.413	5.456	59	2.585	147.454	9.928	157.382	572.890	29,414,796	10,419,670	
Lincoln	433.62	358.8	209.044	4.654	74	1.950	215.648	32.931	248.579	635.983	45,871,946	9,933,352	
Lowndes	334.88	203.2	122.257	7.491	63	1.377	131.125	119.007	250.132	377.376	35,368,188	7,793,687	
Madison	369.85	285.3	154.941	3.518	59	1.433	159.892	57.271	217.163	429.229	29,473,193	7,910,239	
Marion	331.94	286.1	185.490	4.076	63	1.271	190.837	92.845	283.682	607.402	24,733,790	10,290,772	
Marshall	315.61	211	123.760	8.683	44	1.602	134.045	13.985	148.030	277.673	40,151,634	6,587,738	
Monroe	328.95	206.2	143.269	7.595	49	1.084	151.948	37.745	189.693	404.947	29,165,275	9,897,723	
Montgomery	251.78	210.85	89.916	24.752	85	1.858	116.526	16.049	132.575	286.416	24,090,781	7,954,554	
Neshoba	377.67	310.4	185.980	34.354	91	1.638	221.972	9.884	231.856	448.031	31,915,888	9,375,892	
Newton	296.86	273	170.733	6.476	72	1.162	178.371	12.234	190.605	381.285	26,131,908	7,366,948	
Noxubee	317.05	222	127.970	6.607	57	1.151	135.728	19.013	154.741	379.604	27,460,361	5,895,890	
Oktibbeha	285.13	208.8	134.308	10.305	24	0.411	145.024	30.737	175.761	476.003	25,157,108	6,882,287	
Panola	380.4	250.4	157.748	6.586	63	1.819	166.153	116.497	282.650	485.831	36,972,462	6,425,967	
Pearl River	410.01	242	147.493	14.349	72	2.209	164.051	49.026	213.077	652.398	36,226,967	11,692,120	
Perry	286.75	226.5	97.467	6.110	69	1.671	105.248	32.700	137.948	442.908	28,606,339	8,664,906	

IMPROVEMENTS MADE ON THE STATE AID SYSTEM FROM JUNE 30, 1950, THRU JUNE 30, 2014

County	State Aid Mileage			State Aid Improvements						Funds Expended or Obligated		
	Total Allocation	Actually Designated	Paved Mileage	Grading & Grav. Surf.	Brs. Structural		Total Actual Miles	Overlay or Resurf.	Total Construction	Surfacing Reseal/Maint.	To Contact	
					#	Miles					Construction	Reseal/Mant.
Pike	338.5	253.9	134.782	15.627	62	1.733	152.142	7.637	159.779	538.055	26,577,990	11,780,338
Pontotoc	267.15	180.09	99.297	10.876	28	0.683	110.856	4.712	115.568	256.551	16,548,527	8,246,626
Prentiss	281.65	206.25	124.065	20.356	73	1.560	145.981	29.750	175.731	250.281	25,904,357	6,854,510
Quitman	217.38	184.6	86.600	6.268	51	1.556	94.424	33.643	128.067	133.779	20,494,796	4,544,994
Rankin	541.49	270.2	143.255	10.242	81	1.523	155.020	165.762	320.782	284.887	59,883,825	9,143,163
Scott	310.55	223.3	135.873	15.732	88	1.972	153.577	11.786	165.363	424.579	23,364,774	12,345,032
Sharkey	164.28	111.6	73.556	14.543	16	0.486	88.585	40.846	129.431	169.194	12,372,599	7,354,896
Simpson	348.73	286.75	179.918	4.117	83	2.457	186.492	22.089	208.581	595.188	34,013,955	8,833,803
Smith	321.72	260	184.169	11.297	73	1.963	197.429	14.211	211.640	509.705	32,651,312	6,897,592
Stone	223.6	181.9	127.626	2.088	37	0.701	130.415	50.856	181.271	350.533	24,147,364	4,650,460
Sunflower	412.64	249.8	142.237	22.208	55	1.919	166.364	58.876	225.240	286.888	39,726,745	6,751,108
Tallahatchie	296.07	278.1	147.014	22.051	42	1.523	170.588	26.991	197.579	472.460	29,200,312	7,606,635
Tate	244.16	164.8	51.400	17.563	65	1.923	70.886	25.072	95.958	170.643	19,472,978	5,929,506
Tippah	290.95	217.3	139.723	13.772	55	1.222	154.717	9.368	164.085	299.590	27,619,486	5,764,769
Tishomingo	263.67	209.8	122.578	4.137	59	1.215	127.930	66.023	193.953	192.786	25,121,173	8,834,519
Tunica	242.45	204.2	139.241	12.521	80	0.629	152.391	92.584	244.975	203.571	19,504,917	5,884,191
Union	277.64	188.1	107.272	16.112	48	1.163	124.547	17.358	141.905	234.215	27,398,823	5,363,487
Walthall	274.85	218.86	126.916	3.221	73	1.682	131.819	87.873	219.692	560.420	21,034,339	11,469,829
Warren	284.23	193.2	70.877	8.015	35	1.412	80.304	47.143	127.447	234.269	27,426,828	4,910,456
Washington	377.67	359.5	78.712	0.859	66	2.289	81.860	81.520	163.380	105.026	40,547,311	5,186,288
Wayne	410.31	372.1	221.267	11.594	72	1.761	234.622	76.001	310.623	688.383	33,171,942	11,940,471
Webster	277.42	209.2	107.277	7.596	82	1.512	116.385	5.187	121.572	598.832	23,225,374	8,037,385
Wilkinson	223.8	152.9	95.150	2.116	33	1.042	98.308	39.793	138.101	324.112	19,676,441	5,755,472
Winston	296.54	280.55	205.695	37.926	71	1.405	245.026	27.159	272.185	327.244	35,509,799	4,111,292
Yalobusha	212.75	176.7	99.716	1.365	50	1.226	102.307	-	102.307	520.915	18,609,039	7,616,834
Yazoo	400.98	320.5	223.433	11.691	41	1.680	236.804	104.119	340.923	907.759	31,602,683	11,263,562
Totals	25,857.04	19,036.53	11,108.808	848.795	4,954	130.086	12,087.690	3,837.386	15,925.076	32,658.787	2,423,062.092	671,386.093

STATE AID PROGRAM CONSTRUCTION AND ENGINEERING DISBURSEMENTS BY COUNTY AND SYSTEM FROM JULY 1, 2013 THRU JUNE 30, 2014

COUNTY	RR CROSSING RRS/STP-C & RR SIGNAL RRP/STP-S	MDOT HIGH PRIORITY MS	HIGH RISK RURAL ROAD PROGRAM	RURAL SECONDARY GRADE RSG/STPG	ACCESS HIGHWAY LAKES AHL	APPALACHIAN ACCESS HIGHWAY APL	PUBLIC LAND HIGHWAYS EFLH/PLH	DEFENSE ACCESS AGMC	EMERGENCY RELIEF	CONGESTION RELIEF	LOCAL SYSTEM ROAD PROJECTS	STATE AID PROJECTS SAP	SURFACE TRANSPORTATION BRIDGE PLACEMENT	TOTALS BY COUNTY
	System 01 & 02	System 19	System 25	System 32	System 34	System 36	System 62 & 63	System 64	System 66	System 68	System 80	System 81	System 82 & 46	System 85
Adams												488,229.38	267,720.53	755,950
Alcorn						37,868.00						217,678.61	1,547,750.87	1,803,297
Amite												1,760,662.21	147,790.23	1,908,452
Attala												697,082.97	679,423.95	1,384,965
Benton				439,993.13			26,689.45					1,118,259.02	1,175.00	1,586,117
Bolivar		400,461.54									29,399.51	1,369,454.26		1,799,315
Calhoun												834,874.87	256.80	1,404,875
Carroll												33,528.88	15,847.20	118,926
Chickasaw							7,770.00				40,950.00	246,517.27	1,368,017.87	2,169,225
Choctaw						60,739.25					7,957.39	715,098.33		1,601,634
Claiborne												82,230.68	5,640.00	87,871
Clarke												1,269,622.82	2,212.16	1,271,835
Clay		104.00										1,045,412.04	140,449.51	1,223,572
Coahoma		1,500.00	57,458.50								153,528.46	287,768.56		501,756
Copiah		57,597.97										191,007.93		248,606
Covington			543,880.53									55,033.31	431,270.51	1,384,044
DeSoto												1,314,914.26	8,374.79	1,697,686
Forrest												1,899,734.48	203,244.00	2,132,115
Franklin													29,136.16	92,498
George												1,899,039.53	19,755.32	3,401,844
Greene												1,098,652.48	7,734.16	1,107,887
Grenada		80,036.00									340,012.15			420,048
Hancock									(9,485.00)					(9,485)
Harrison			410,432.98				144.00					2,659,463.51		3,070,040
Hinds	2,381,452.43											675,282.34		3,056,735
Holmes	13,061.86											904,280.65	350.00	1,082,866
Humphreys	1,036.87											985,875.69		986,913
Issaquena														0
Itawamba												1,160,113.77	367,844.19	2,183,939
Jackson	559,356.28											134,136.37		701,013
Jasper							7,965.00					875,429.89	534,756.56	1,684,059
Jefferson												667,486.46		764,358
Jeff Davis												905,104.77	3,175.24	933,114
Jones			83,991.09									1,115,146.73	3,690.16	1,202,828
Kemper												1,361,264.68		1,362,868
Lafayette												382,010.08	423.65	1,465,305
Lamar	3,157,726.49											414,683.23	174,829.53	3,816,739
Lauderdale												1,237,622.65	60,616.68	1,325,424
Lawrence		4,745.00										93,085.19	571,395.20	669,225
Leake												318,864.13		413,580
Lee						32,911.75						784,948.66	675,080.44	2,378,170
Leflore							316,789.11				40,867.63	1,481,601.75		1,839,258
Lincoln		20,311.00										1,458,017.13		1,515,431

OFFICE OF STATE AID ROAD CONSTRUCTION

FY 2014 ANNUAL REPORT

STATE AID PROGRAM CONSTRUCTION AND ENGINEERING DISBURSEMENTS BY COUNTY AND SYSTEM FROM JULY 1, 2013 THRU JUNE 30, 2014

COUNTY	RR CROSSING RRS/STP-C & RR SIGNAL RRP/STP-S	MDOT HIGH PRIORITY MS	HIGH RISK RURAL ROAD PROGRAM	RURAL SECONDARY GRADE RSG/STPG	ACCESS HIGHWAY LAKE AHL	APPALACHIAN ACCESS HIGHWAY APL	PUBLIC LAND HIGHWAYS EFLH/PLH	DEFENSE ACCESS AGMC	EMERGENCY		LOCAL SYSTEM ROAD PROJECTS	STATE AID PROJECTS SAP	SURFACE TRANSPORTATION BRIDGE PLACEMENT		TOTALS BY COUNTY
									RELIEF	RELIEF			STP	BR	
	System	System	System	System	System	System	System	System	System	System	System	System	System	System	
Lowndes	01 & 02	19	25	32	34	36	62 & 63	64	66	68	80	81	82 & 46	85	201,734
Madison												201,733.89			5,827
Marion												5,827.44			2,126,201
Marshall		74,235.42				26,195.22						1,059,681.96	276,668.93	789,850.42	1,350,236
Monroe												1,116,631.42			44,609
Montgomery												43,534.37	1,075.00		1,284,210
Neshoba												509,788.31		774,421.58	2,068,848
Newton			12,616.31									1,983,345.80		85,502.48	1,608,637
Noxubee							6,553.24					1,164,519.39		431,501.16	1,341,834
Okfuskeena		398,002.00	3,044.92									125,916.00		1,209,365.06	2,464,044
Panola												679,055.02	1,103,062.43	280,879.51	2,354,109
Pearl River		99,759.00									522,761.14	1,831,347.86			1,515,492
Perry		1,140,397.54										1,094,700.62	14,025.40	307,006.97	1,812,064
Pike							128,422.57					539,743.89		3,500.00	2,062,585
Pontotoc				38,945.23								1,062,176.69	6,620.00	993,788.46	360,077
Prentiss												277,773.08	3,138.00	40,220.88	556,881
Quitman		632.93				52,015.00						456,262.07	16,846.31	31,757.80	1,170,511
Rankin		1,738.70										1,112,309.58	3,676.55	53,892.08	4,366,636
Scott												4,364,897.28			1,209,278
Sharkey												995,038.41	214,239.59		0
Simpson			118,737.96									89,397.46	258,995.57	717,230.63	1,184,362
Smith							13,288.12					103,316.27		42,305.86	158,910
Stone				257,571.66								8,634.23	53,290.94	389,574.01	709,071
Sunflower		21,025.00										865,945.24	492,378.77		1,379,349
Tallahatchie		22,056.58	14,892.87									432,503.05	16,763.00		486,216
Tate											327,062.34		3,225.00	85,860.09	416,147
Tippah												1,080,375.36	865,986.08	602,350.54	2,548,712
Tishomingo												297,873.87	54,346.27		614,134
Tunica											261,913.99	1,193,282.41	38,736.58		1,232,019
Union						850.00						1,580,679.32			1,581,529
Walthall												530,609.05			530,609
Warren												833,447.96			833,448
Washington		665,149.81												103,860.77	769,011
Wayne							19,973.41					1,923,285.55	3,957.28	498,617.87	2,445,834
Webster												1,275,190.78	10,408.07	61,161.10	1,346,760
Wilkinson														352,402.69	352,403
Winston							1,255,812.36					22,438.97	443,467.39	397,227.37	2,118,946
Yalobusha												770,492.33	7,714.60	523,695.22	1,301,902
Yazoo												1,412,450.23		350,223.38	1,762,674
Service Center **												110,467.51			110,468
Statewide **															5,476,877.11
TOTALS BY SY:	0.00	9,100,386	1,245,055	736,510	0	210,579	1,783,407	0	(9,485)	0	1,724,453	64,854,148	9,703,929	24,459,110	113,808,093

* System 81, Testing Charges paid to Calvert on SAP 99 and to Burns & Cooley on SAP 99 100

** System 82, Wetland Mitigation, System 85, Bridge Inspection and Bridge Posting Projects

**LOCAL SYSTEM BRIDGE PROGRAM CONSTRUCTION AND ENGINEERING DISBURSEMENTS
BY COUNTY AND SYSTEM FROM JULY 1, 2013 THRU JUNE 30, 2014**

COUNTY	LOCAL SYSTEM ROAD PROJECTS	LOCAL SYSTEM BRIDGE PROJECTS	TOTALS BY COUNTY
	System 80	System 81	
Adams	0.00	3,750.00	3,750.00
Alcorn	0.00	125.00	125.00
Amite	0.00	1,523,189.93	1,523,189.93
Attala	0.00	1,655,289.11	1,655,289.11
Benton	0.00	0.00	0.00
Bolivar	0.00	73,070.87	73,070.87
Calhoun	0.00	145,517.47	145,517.47
Carroll	0.00	377,591.82	377,591.82
Chickasaw	0.00	13,866.97	13,866.97
Choctaw	0.00	25,865.21	25,865.21
Claiborne	0.00	0.00	0.00
Clarke	0.00	330,308.86	330,308.86
Clay	0.00	160,470.92	160,470.92
Coahoma	153,528.46	0.00	153,528.46
Copiah	0.00	282,945.48	282,945.48
Covington	0.00	94,543.72	94,543.72
DeSoto	0.00	117,377.00	117,377.00
Forrest	0.00	0.00	0.00
Franklin	0.00	0.00	0.00
George	0.00	1,204.00	1,204.00
Greene	0.00	2,675.00	2,675.00
Grenada	340,012.15	0.00	340,012.15
Hancock	0.00	0.00	0.00
Harrison	0.00	418,166.76	418,166.76
Hinds	0.00	866,919.32	866,919.32
Holmes	0.00	54,773.80	54,773.80
Humphreys	0.00	61,957.79	61,957.79
Issaquena	0.00	0.00	0.00
Itawamba	0.00	33,910.20	33,910.20
Jackson	0.00	289,188.51	289,188.51
Jasper	0.00	999.22	999.22

**LOCAL SYSTEM BRIDGE PROGRAM CONSTRUCTION AND ENGINEERING DISBURSEMENTS
BY COUNTY AND SYSTEM FROM JULY 1, 2013 THRU JUNE 30, 2014**

COUNTY	LOCAL SYSTEM ROAD PROJECTS	LOCAL SYSTEM BRIDGE PROJECTS	TOTALS BY COUNTY
	System 80	System 81	
Jefferson	0.00	25,945.92	25,945.92
Jefferson Davis	0.00	114,142.13	114,142.13
Jones	0.00	1,753.16	1,753.16
Kemper	0.00	162,828.02	162,828.02
Lafayette	0.00	318,791.04	318,791.04
Lamar	0.00	6,921.05	6,921.05
Lauderdale	0.00	106,374.85	106,374.85
Lawrence	0.00	25,225.26	25,225.26
Leake	0.00	13,746.74	13,746.74
Lee	0.00	152,182.37	152,182.37
Leflore	40,867.63	0.00	40,867.63
Lincoln	0.00	54,665.36	54,665.36
Lowndes	0.00	523,463.85	523,463.85
Madison	0.00	185,548.06	185,548.06
Marion	0.00	7,402.20	7,402.20
Marshall	0.00	263,957.13	263,957.13
Monroe	0.00	27,033.68	27,033.68
Montgomery	0.00	36,433.68	36,433.68
Neshoba	0.00	141,782.84	141,782.84
Newton	0.00	447,731.43	447,731.43
Noxubee	0.00	182,853.37	182,853.37
Oktibbeha	0.00	173,974.08	173,974.08
Panola	0.00	1,093,784.94	1,093,784.94
Pearl River	0.00	320,808.40	320,808.40
Perry	0.00	284,054.68	284,054.68
Pike	0.00	321,492.44	321,492.44
Pontotoc	0.00	51,629.92	51,629.92
Prentiss	0.00	381,418.09	381,418.09
Quitman	0.00	161,793.99	161,793.99
Rankin	0.00	0.00	0.00
Scott	0.00	36,165.16	36,165.16

**LOCAL SYSTEM BRIDGE PROGRAM CONSTRUCTION AND ENGINEERING DISBURSEMENTS
BY COUNTY AND SYSTEM FROM JULY 1, 2013 THRU JUNE 30, 2014**

COUNTY	LOCAL SYSTEM ROAD PROJECTS	LOCAL SYSTEM BRIDGE PROJECTS	TOTALS BY COUNTY
	System 80	System 81	
Sharkey	0.00	0.00	0.00
Simpson	0.00	492,311.94	492,311.94
Smith	0.00	10,983.86	10,983.86
Stone	0.00	617,976.82	617,976.82
Sunflower	0.00	870,524.73	870,524.73
Tallahatchie	0.00	218,282.62	218,282.62
Tate	0.00	0.00	0.00
Tippah	0.00	30,533.43	30,533.43
Tishomingo	0.00	175.00	175.00
Tunica	0.00	255,001.34	255,001.34
Union	0.00	0.00	0.00
Walthall	0.00	56,741.02	56,741.02
Warren	0.00	0.00	0.00
Washington	0.00	871,591.57	871,591.57
Wayne	0.00	17,959.64	17,959.64
Webster	0.00	229,945.20	229,945.20
Wilkinson	0.00	176,364.18	176,364.18
Winston	0.00	0.00	0.00
Yalobusha	0.00	72,580.62	72,580.62
Yazoo	0.00	72,285.81	72,285.81
TOTALS BY SYSTEM	534,408	16,150,868.58	16,685,276.82