

The mission of the Mississippi Forestry Commission is to provide active leadership in forest protection, forest management, forest inventory and effective forest information necessary Mississippi's forest-based distribution for sustainable economy.

MISSISSIPPI FORESTRY COMMISSION

Annual Report
Fiscal Year 2007



The mission of the Mississippi Forestry Commission is to provide active leadership in forest protection, forest management, forest inventory and effective forest information distribution necessary for Mississippi's sustainable forest-based economy.



The Mississippi Forestry Commission has provided forest protection and forest management to Mississippi landowners since 1926.
Learn more at www.mfc.state.ms.us.

The Mississippi Forestry Commission provides equal employment opportunity and services to all individuals regardless of disability, race, age, religion, color, gender, creed, nation origin or political affiliation.

This institution is an equal opportunity provider.

*Cover photos:
Mississippi Forestry Commission
and Mississippi Museum of Natural Science*

- 1 MESSAGE FROM THE STATE FORESTER – A YEAR OF CHANGE AND GROWTH
- 2 Introduction and District Map
- 3 MFC's New Organizational Chart
- 4 MISSISSIPPI INSTITUTE FOR FOREST INVENTORY/FOREST MANAGEMENT
 - 4 Private Lands
 - 4 Forest Legacy Program
 - 5 Forest Resource Development Program
 - 5 Forest Stewardship Program
 - 6 Public Lands
 - 6 Sixteenth Section Lands
 - 6 Forest Health
 - 6 Forest Pests
 - 7 Tree Nursery
 - 7 Tree Improvement Program
- 8 FOREST PROTECTION AND INFORMATION
 - 8 Fire Services
 - 8 Aviation
 - 8 Communications
 - 9 Federal Excess Personal Property Program
 - 9 Volunteer Fire Assistance Program
 - 10 Fire Law Enforcement
 - 10 Preparedness
 - 11 State Coordination Center
 - 11 Forest Information
 - 11 Public Outreach / Conservation Education
 - 12 Urban / Community Forestry Program
 - 12 Champion Tree Program
- 13 BUSINESS SUPPORT
 - 13 Financial Services
 - 13 Information Systems
 - 13 Purchasing
- 13 HUMAN RESOURCES
- 13 PERSONNEL
- 13 SAFETY & TRAINING
- 14 - 15 MFC FY07 Revenue and Expenses
- 16 HURRICANE KATRINA RECOVERY: SPECIAL REPORT
- 17 MFC Board of Commissioners

A Year of Change and Growth

Since 1926, the Mississippi Forestry Commission has served the state by providing forest protection and management to landowners. Over the years, we've adapted our services and programs to continually meet



Charlie Morgan

the changing needs of landowners and the landscape. Fiscal Year 2007 was a time of renewal and planned growth, following a long process of reorganization and planning. I'm pleased to share the highlights of this pivotal year in our 2007 *Annual Report*.

With much needed federal funding, the MFC continued to implement our recovery plan developed in response to Hurricane Katrina. Our excellent staff and contract foresters conducted extensive inventory, analysis and reforestation of affected counties, and improved our preparedness for the future threat of hurricanes in our state. Highlights of MFC's appropriations and accomplishments are detailed in the Hurricane Katrina Recovery Update found on page 16.

In FY07, we introduced the Lead Team Concept of management. Each month the team meets to discuss detailed cost accounting, monthly income and expense statements, forecast planning, operating norms, and a review of agency objectives. The agency programs have been segmented into two focus areas: Forest Protection/Information and the Mississippi Institute for Forest Inventory/Forest Management. The role of the

District Foresters was also expanded. The five District Foresters are the critical mass of the agency's leadership team and are responsible for managing almost 90 percent of the MFC's personnel and other resources. Their responsibilities now include a more active role in the legislative process, and they carry out the mission of our agency through their five administrative districts.

Our lead team worked with staff, commissioners and stakeholders to develop and implement a new Strategic Plan for 2007-2011. The plan sets aggressive goals for improving forest protection, management and information statewide. The plan has two overarching goals:

- 1) Continue to build on our commitment to open transparent communication with state leadership and the citizens of Mississippi, and
- 2) Provide timely information, management and protection services to our customers.

FY07 was a successful and productive year for the MFC – a direct result of many hours of planning and discipline. Our new structure allows the MFC to better manage forest resources, meet the needs of our customers and facilitates better communication among staff, the new lead team and the public.

As a key part of the plan implementation, we also installed a new cost accounting system that tracks all expenses and revenue by program area which allows us to further improve efficiency in managing programs and limited resources.

The FY07 financial report on pages 14 - 15 is a product of our new system.

The MFC has expanded its use of partnerships to more effectively respond to customer needs and protect and manage Mississippi's forestlands. We appreciate our many key partners who helped implement programs and provide services detailed in this report.

FY07 was a successful and productive year for the MFC – a direct result of many hours of planning and discipline. Our new structure allows the MFC to better manage forest resources, meet the needs of our customers and facilitates better communication among staff, the new lead team and the public. I am truly grateful for the guidance of our state leaders, Board of Commissioners, staff, partners and customers in helping develop and implement the new plan and structure. Enjoy reading about the highlights of the year in the following pages, beginning with our new organizational chart on page 3.

Please contact us anytime for assistance.

A handwritten signature in dark ink that reads "Charlie Morgan".

Charlie Morgan
State Forester

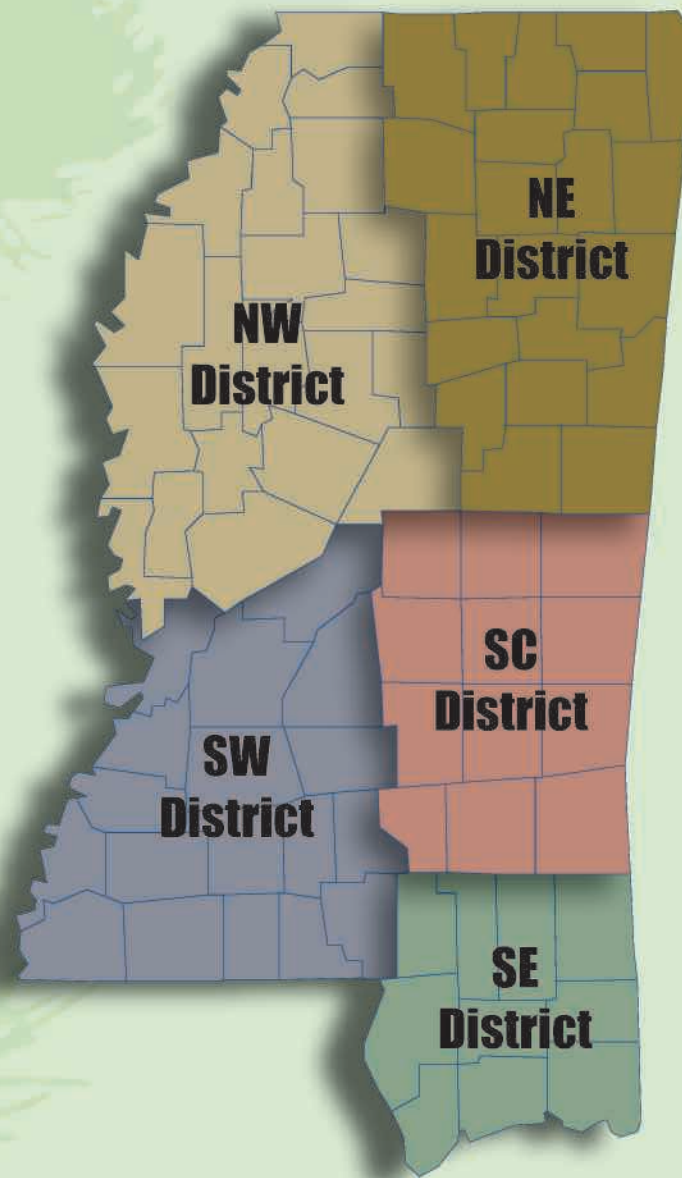


The Mississippi Forestry Commission (MFC) is a public service agency created by the Mississippi Legislature and is responsible for all facets of forest protection, management and information for the State of Mississippi. The agency is divided into two major program areas: **Forest Protection/Information** and the **Mississippi Institute for Forest Inventory/Forest Management**. These areas are supported by the Business Support, Legal Counsel and Human Resource departments. This annual report provides an overview of each program area and highlights our services, accomplishments and revenue and expenses for Fiscal Year 2007 (July 1, 2006 to June 30, 2007).

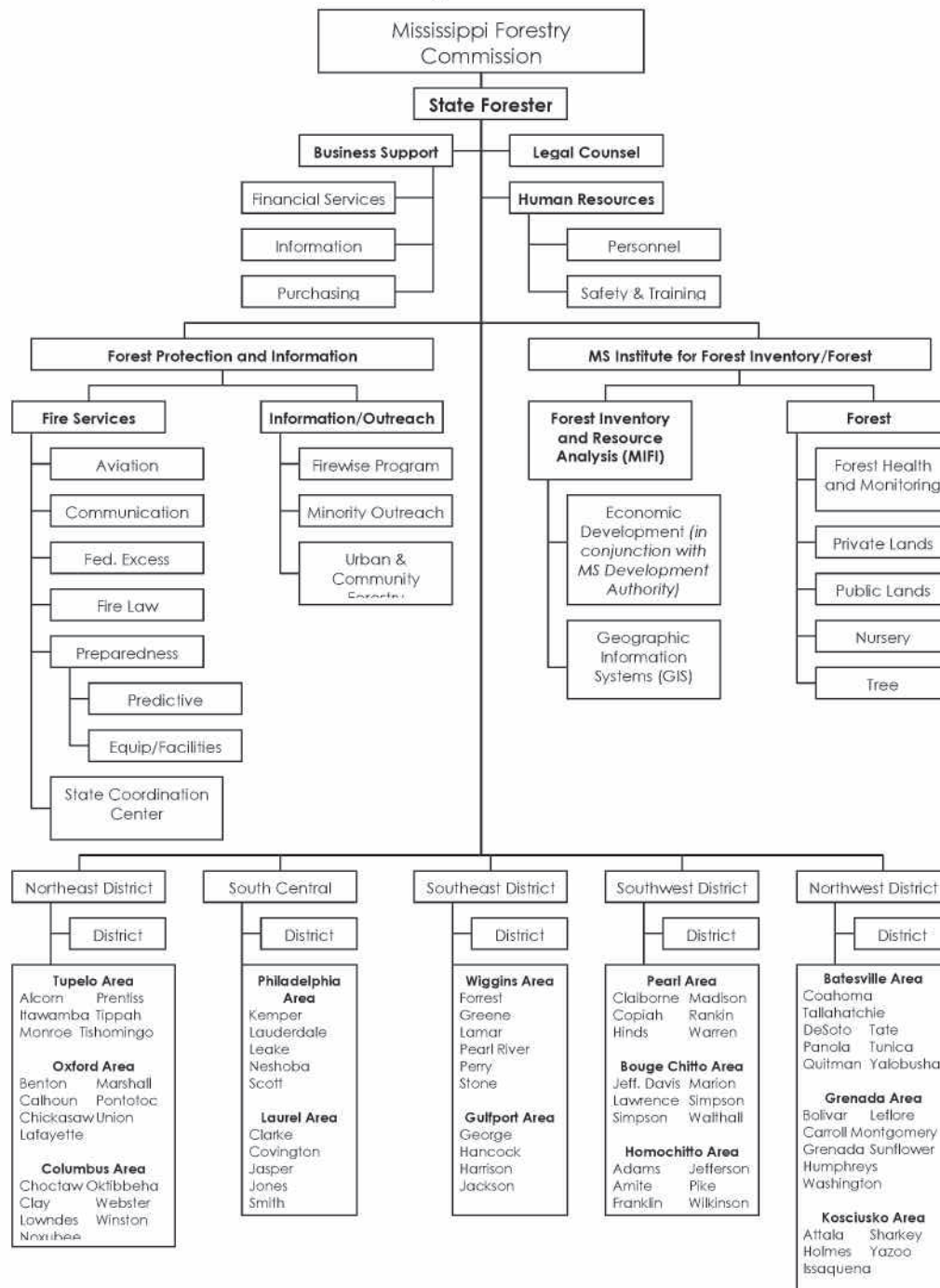
The new organizational chart and map of the MFC's five administrative districts (to the right and next page) resulted from the MFC's reorganization and strategic planning efforts over the past two years. A contact list for each area within the five districts is on the back cover.



Mississippi Forestry Commission
Administrative District Lines



MFC Organizational Chart



The Mississippi Institute for Forest Inventory/Forest Management contains three divisions: Mississippi Institute for Forest Inventory, Forest Management (public and private lands) and Forest Health.

Mississippi Institute for Forest Inventory

In 2006, the Mississippi Legislature passed a law that brought the Mississippi Institute of Forest Inventory (MIFI) under the oversight of the MFC. Both MIFI and the MFC's Forest Management Division dealt with forest inventory; therefore, consolidating these activities eliminated duplication of work in particular areas and also allowed each department to capitalize on the other's strengths and become a stronger organization.

Included in this is the MFC's Resource Analysis program which oversees the development implementation and management of the agency's geographic information system. This is a statewide system used by fire, public lands, private lands and urban and community forestry programs that support forest-based economic development.

To promote economic development of the state's forest resources, MIFI, in conjunction with the Mississippi Development Authority (MDA), provides forest resource information and maps. A statewide assessment of forest resources is maintained utilizing satellite imagery to estimate forest removals, regeneration and developmental stages of forest cover.

In FY07, MIFI completed a baseline forest inventory for 60 percent of Mississippi counties. Twenty additional counties will be inventoried by May 2008 with the remaining to be complete by May 2009. In addition, MIFI responded to a 1,200 percent increase in requests for resource analysis for ethanol conversion facilities in 2007.

Forest Management

The MFC is charged in Mississippi Code Section 49-19-3 to *promote sound forest management practices which maintain the integrity of the environment and provide for our state's future natural resource needs*. The MFC offers a variety of forest management services to private landowners as well as to managers of public forestlands of Mississippi such as Sixteenth Section lands and other state agency properties.

FY07 Statewide Forest Management Accomplishments

Private Lands - Landowners Assisted	15,828
Seedlings Sold	14,157,100
Acres Regenerated or Improved	
Forest Resource Development Program	30,333
Federal Forestry Incentive Programs Assistance	3,770
Public Land Activities	
Timber Sale Receipts	\$9,682,784
Acres Regenerated	6,962
Forest Management	
Plans	2,463
Acres	151,388
Prescribed Burning (Acres)	
Private Lands	10,120
Public Lands	8,169
Total	18,289

Private Lands

The MFC provides technical and financial assistance to private nonindustrial forest landowners (PNIFs) in Mississippi. Of the state's 19.79 million acres of forestland, 77 percent, or

Mississippi Forest Types Total Acres in Mississippi = 30,521,018 Total Forested Acres in Mississippi = 19.79 million

Type	Acres	Percentage
Pine	7,640,580	38.6
Hardwood	9,184,530	46.4
Mixed	2,949,430	15.0
Total	19,774,540	100.0

more than 13 million acres, belongs to an estimated 350,000 PNIFs with parcels of 10 acres or greater. The MFC provides technical financial assistance to PNIFs through programs designed to enhance and protect natural resources.

Forest Legacy Program

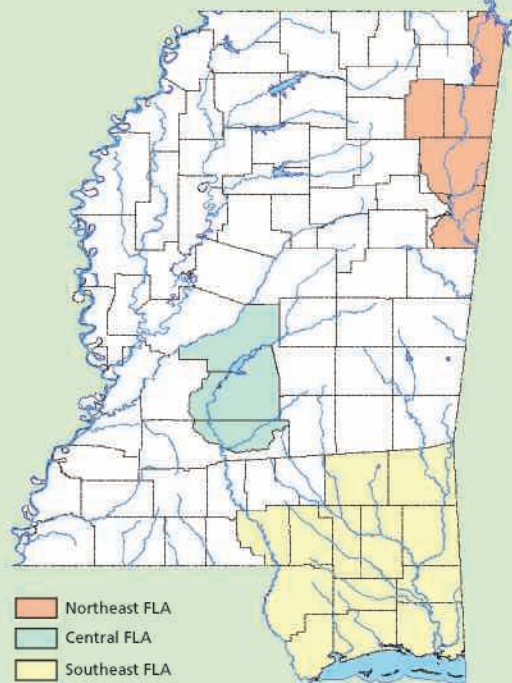
The Forest Legacy Program (FLP) was authorized by the 1990 Food, Agriculture, Conservation and Trade Act to identify and protect environmentally important, private forestlands threatened with conversion to non-forest uses. FLP is a USDA Forest Service program in partnership with Mississippi that will help support local efforts to protect environmentally sensitive, privately owned forestlands threatened by conversion to non-forest use through land acquisition and conservation easements.

In 2007, MFC staff and the Forest Stewardship Committee and its Forest Legacy Subcommittee developed and submitted our proposed 2007-2011 *Assessment of Need* (AON). This document is a

statewide plan for implementing the FLP in Mississippi and identifies areas such as southeast, central and northeast Mississippi where important natural forest communities



Mississippi Forest Legacy Areas



exist on private lands that are potentially threatened by conversion from urban and suburban growth or other threats. The AON recommends these areas of the state be designated as Forest Legacy Areas so that willing landowners may nominate their property as a possible Forest Legacy Tract. The MFC administers the FLP with funding from the USDA Forest Service.

Forest Resource Development Program

The Forest Resource Development Program (FRDP) was established in 1974 by the Mississippi Legislature for developing the state's forest economy. The MFC's Forest Management Division is responsible for coordinating the technical assistance components and financial elements of this program.



This program provides cost-share funding for tree planting and forest improvement practices for the purpose of long-term timber production. In addition, it helps offset a landowner's expense by sharing the cost of implementing specific forestry practices designed to produce timber and enhance wildlife development. Cost-share payments cover 50 to 75 percent (depending on the practice) of the total cost of implementing one or more forestry practices, not to exceed a maximum limit set for each individual practice. Eligible landowners can receive up to \$7,000 of FRDP assistance a year. In turn, a landowner agrees to protect the area receiving

Over \$2 million each year is distributed to private forest landowners in Mississippi through the Forest Resource Development Program which provides cost sharing for tree planting and forest improvement.

private forest landowners in Mississippi through the FRDP.

Forest Stewardship Program

The Forest Stewardship Program promotes natural resource planning on private, nonindustrial forestlands. Landowners not currently under forest management are encouraged to utilize stewardship management through the development and implementation of a



Forest Stewardship Management Plan. Plans are based on sound management principles designed to restore and protect forest resources and water quality and to improve fish and wildlife habitat.

The Forest Stewardship Program is funded by

FRDP assistance from fire and grazing and to properly manage the area for a minimum of ten years.

Over two million dollars each year is distributed to

the USDA Forest Service. The program is carried out by the MFC through its Forest Stewardship Committee. Technical assistance is provided by local, federal, state and private natural resource agencies and organizations. The State Plan for the Mississippi Forest Stewardship Program provides the framework for how the Forest Stewardship Program is conducted in Mississippi. The plan also contains stewardship background, guidelines and forms for landowners and resource professionals.



Public Lands

Through the Public Lands program, the MFC provides management assistance to boards, agencies and other entities having jurisdiction over approximately 500,000 acres of non-federal public forestlands in Mississippi. The Public Lands program is responsible for the management of two State Forests (Kurtz and Camden); providing technical direction on the management of school trust lands under the administration of the local school boards (Sixteenth Section lands); and rendering assistance to the various agencies, boards, departments and other entities having jurisdiction over state and other public lands in Mississippi.

Sixteenth Section Lands

The MFC is charged with maximizing timber production on a sustained yield basis on School Trust lands also known as Sixteenth Section lands classified as "Forest Land" by the local school boards. In addition to timber production, management considerations also include wildlife, soil and water quality, aesthetics

and other appropriate benefits of forestlands. There are 438,118 forested Public School Trust land acres in 67 counties under management and marketing agreements with the MFC.

Anticipating future needs, the MFC is taking the necessary steps to ensure all School Trust forest lands are managed sustainably and that best management practices are used. Therefore, the agency has completed or is in the process of completing the following:

- Converting all School Trust land to a statewide GIS-based system.
- Conducting a statewide forest inventory on all School Trust forestland to be completed in FY08.
- Developing a statewide management database system for preparing management plans as well as for planning, tracking, monitoring and reporting forest practices and activities on School Trust forestland.

Forest Health

Forest Pests

The MFC provides forest pest detection, evaluation and control recommendations for all private and state-owned timberlands, as well as urban areas, and conducts at least one statewide aerial survey each year. Additional surveys are made when needed. Insect and disease spots are ground checked to determine the exact cause and extent of damage.

Timber damage from forest insects and disease has been very light on a statewide perspective for FY07 compared to previous years. However,



Southern Pine Beetle

the southern pine beetle kills more pine timber in the South than any other forest insect. As a result, the MFC has partnered with the MSU Extension Service to produce a pine beetle brochure to hand out at County Forestry Association meetings and landowner field days.

The second leading insect to kill pine timber in the South is the *Ips* engraver beetle. Drought conditions, such as those of this last year, and stress from Hurricane Katrina winds have caused the *Ips* engraver beetle populations to increase dramatically in Mississippi.



Ips Engraver Beetle



In FY07, a new forest pest was detected in Mississippi, the redhumped caterpillar. These insects feed in groups on lower leaf surfaces and skeltonize the leaves. As the larvae become larger,



Redhumped Caterpillar

individuals tend to disperse and consume the entire leaf. Infestations have been found along major transportation corridors in the city of Jackson along the Pearl River as well as in Warren, Jackson, Harrison, Lee and Tishomingo Counties. While the threat is uncommon, it can be an occasional pest when conditions are right.

Tree Nursery

The MFC has been in the tree nursery business since 1937, supplying over two billion seedlings, which have been planted to sustain the state's important forest resource. The MFC nursery primarily services the small PNIFs and Mississippi public forestlands. In FY07, the Forestry Commission's tree nursery (located near Waynesboro) distributed a total of 14,157,100 seedlings.

Tree Improvement Program

The MFC Craig Seed Orchard in Lamar County produces genetically improved pine seed. The seed is stored until needed for nursery production of genetically improved seedlings. Mississippi's Own Super Trees (MOST) is the name of the Commission's line of genetically improved seedlings, which have been field tested and are custom grown for planting in Mississippi.

As part of the MFC's long-term strategic plan, the Forestry Commission has been reviewing the feasibility and cost effectiveness of its tree nursery and tree improvement programs. In FY 06, the MFC closed the hardwood nursery at Winona, leaving the Waynesboro Nursery in Wayne County as the remaining tree nursery operated by the MFC. Pine seedlings are grown at the Waynesboro facility.

During FY 07, two primary factors being evaluated concerning the feasibility and cost effectiveness of the MFC's nursery and tree improvement programs are 1) the abundance of high quality, genetically improved seedlings available from sources outside of the MFC and 2) the MFC's percentage of the total seedling market serving the state.



FY07 crop of pine seedlings at the Waynesboro Nursery.

Forest Protection and Information includes two divisions: Fire Services and Forest Information / Public Outreach.

Fire Services

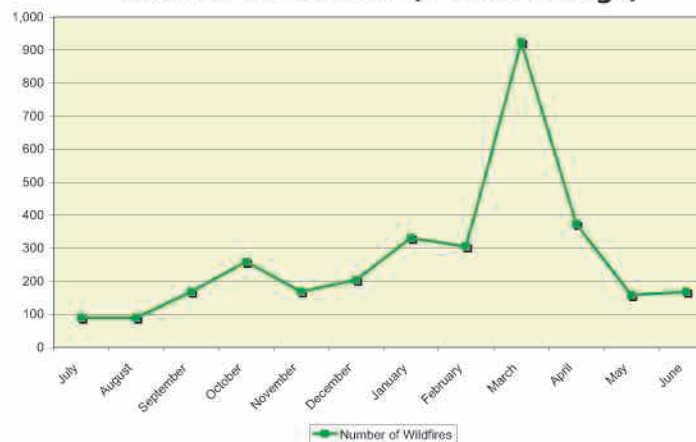
In 1926, the Mississippi Legislature mandated that the MFC protect the state's forestland from wildfire. At that time, wildfires were consuming more than five million acres of timberland each year.

Since 1926, great strides in wildfire prevention, detection and suppression have been taken. However, wildfires still continue to plague Mississippi. On average, there are approximately 3,200 wildfires each year in Mississippi burning over 56,000 acres. In FY07, the MFC suppressed 3,951 wildfires, which burned 65,113 acres. The average wildfire size for FY07 was 16.5 acres. This was down from 5,977 wildfires, which burned 124,833 acres in FY06. The wildfire activity in FY06 was well above average due to drought conditions and downed timber from Hurricane Katrina.

The Fire Services division includes six departments: aviation,



Number of Wildfires (5 Year Average)



communications, federal excess personal property program, fire law enforcement, preparedness and a state coordination center.

Aviation

Wildfire detection is provided by airplane surveillance coupled with the public's reporting of wildfires using toll-free numbers provided by the MFC. Fire suppression crews are dispatched

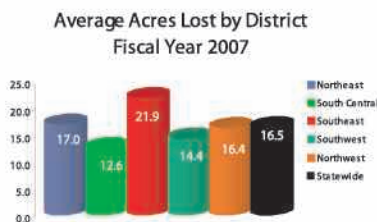
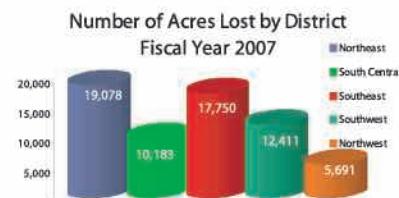
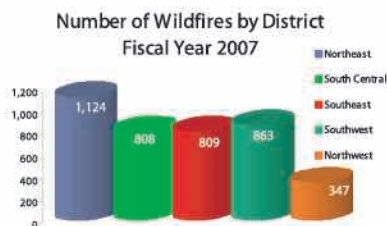
from a central dispatching center located at each district office. The MFC's aviation department also provides service and support to Forest Health and other forest management programs.

Communications

An essential element of the agency's ability to deploy firefighting

resources and maintain situational awareness of wildfire activity is dependable radio communications. The Communications department is responsible for the maintenance and upgrades to the MFC's communication network which spans across the state. Components of the network include mobile radios in the agency's fleet of vehicles, light weight hand-held radios for field personnel, and the communication network of radio repeater sites which provides statewide communication from dispatch centers to field personnel.

Wildfire Activity for Fiscal Year 2007



Number of Wildfires for FY 2007 = 3,951
Number of Acres Lost for FY 2007 = 65,113
Average Wildfire Size for FY 2007 = 16.5 Acres

In FY07, the MFC deployed an innovative and state-of-art "radio over Internet Protocol" (radio/IP) communication system, which converts radio signals into a digital format and transmitted in real time through the existing MFC computer network. This communication system is also capable of connecting to approved state government emergency communication networks.

Federal Excess Personal Property

Providing assistance to the state's volunteer fire departments has had a significant impact on reducing the number of wildfires in Mississippi. This assistance is available through the Federal Excess Personal Property (FEPP) program that is administered by the MFC through an agreement with the USDA Forest Service.

In an effort to reduce the number of carelessness-caused wildfires, burn bans are authorized by County Boards of Supervisors and approved by the MFC. Burn ban notifications are listed on the MFC's website at www.mfc.state.ms.us.

loan property to state forestry agencies for the purpose of wildland and rural firefighting. The Forest Service is authorized and encouraged by the Secretary of Agriculture to loan FEPP to states and through them, to local fire forces. Approximately 70 percent of the property involved in the FEPP program in Mississippi is sub-loaned to local fire departments. In FY07, the MFC's FEPP issued 85 vehicles with an estimated cost of \$3,099,805.



Volunteer Fire Assistance Program

The Volunteer Fire Assistance Program (VFA), formerly known as the Rural Community Fire Protection Program, provides matching grants to eligible rural volunteer fire departments (VFDs) for the purchase of firefighting equipment. The MFC administers this program through an agreement with the USDA Forest Service. Since 1975, when Congress first funded the Rural Community Fire Protection (RCFP) program, 999 grants of up to \$2,000 have been issued to rural volunteers fire departments in Mississippi. In FY07, 43 Volunteer Fire Departments were awarded grants in the amount of \$79,050.



FEPP Vehicle (before)



FEPP Vehicle (after)

Fire Law Enforcement

The MFC and the Mississippi judicial system have the responsibility to pursue the arrest and conviction of woods arsonists, individuals who show little or no concern for Mississippi's citizens and forest resource. Likewise, they are just as responsible to pursue retribution in instances where negligence has caused wildfires that result in the expenditure of state and/or federal funds.

Woods arson has historically been the leading cause of wildfires in Mississippi. In 1993, in an attempt to abate the problem, the Mississippi Legislature established fire law enforcement positions within the MFC. The duties and authority of these officers are limited to woods arson. These officers may *issue citations for any violation of those laws designed for the*

protection from fire recklessly or with gross negligence being communicated on the lands of another, (Section 49-19-3).

Accidental fires such as escaped control burns and debris burns are as costly as those set on purpose and are the second most common cause of wildfire in Mississippi. They require the same types of actions and resources as arson fires.

In FY07, MFC investigated a total of 200 arson cases (criminal and civil). For woods arson felony cases, there were 9 indictments in 3 counties (George - 1, Hancock - 1, Tippah - 6), 2 convictions in 2 counties (Leake - 2 and Jackson - 1) and 1 case in Union County is awaiting a Grand Jury hearing. There were 4 woods arson misdemeanor convictions in 3 counties (Carroll - 2, Hancock - 1 and Marion - 1), and 8 misdemeanor woods arson citations were issued in FY07.

Preparedness

The Preparedness department encompasses the Predictive Services and Equipment and Facilities Maintenance. This department not only provides assistance with all-risk events such as hurricanes, ice storms and large scale wildfires in Mississippi and to other states, but they also coordinate the management of MFC's firefighting resources within the state.

FY07 Wildfires by Cause

<u>Cause</u>	<u># Wildfires</u>	<u>Acres Burned</u>
Incendiary (Arson)	1,809	38,559
Debris Burning	1,567	18,969
Miscellaneous	215	2,436
Re-ignition	176	2,262
Equipment Use	68	658
Lightning	50	729
Smoking	22	196
Railroad	19	348
Children	18	928
Campfire	7	28
Total	3,951	65,113

Predictive Services brings together all data needed to make sound decisions and long-range plans to ensure the adequate allocation of resources needed for pre-suppression and suppression of wildfires.

The MFC manages 13 remote area weather stations (RAWS) strategically located across the state as part of a national grid of remote area weather stations. These weather stations provide localized forestry and fire-related weather forecast.

The MFC provides the following weather and fire information on the website:

- Fire Danger Rating (USDA Forest Service - Wildland Fire Assessment System or WFAS)
- Current weather
- Forecast
- Fire Danger Rating and Color Code
- Keach Bryam Drought Index
- MFC Daily Fire Situation Report
- Southern Area Coordination Center (SACC)
- National Weather Service Enhanced Radar Image Loop for the United States
- NWS Enhanced Radar Image Loop for Lower Mississippi Valley Sector
- NWS Fire Weather Report



Wildfire origin and cause training for MFC employees

State Coordination Center

The MFC's State Coordination Center (SCC) maintains situational awareness of statewide wildfire activity through monitoring radio traffic between the five district dispatch centers, fire suppression personnel and other fire management and support units. Working in conjunction with Predictive Services, the SCC broadcasts information about developing fire weather and fire behavior conditions. This information is provided to fire management personnel as an aid to making decisions concerning adequate staffing and allocation of fire suppression personnel and equipment.

In FY07, the SCC provided training to district dispatch personnel on the new communication system (Radio over IP) and fire reporting system (FIRES 9.1). By the end of FY07, the SCC had begun expanding its role by providing dispatching assistance to district dispatch centers. With adequate staffing, the SCC will be able to provide after-duty dispatch coverage for each district.

Forest Information / Public Outreach

The Forest Information / Public Outreach division supports all MFC program areas by providing information, program promotional activities and program publicity. The division utilizes mass media outlets (e.g., radio, television and newspaper) to release forestry and agency information to the public at large. A variety of delivery methods are employed to reach the public in the most effective manner. The Forest Information / Public Outreach division has three departments: Forest Information, Public Outreach / Conservation Education, and Urban/Community Forestry.

Forest Information

The Forest Information department provides support to all MFC programs through the development of displays, exhibits, brochures, and other informational material.

The department is responsible for maintaining the MFC's website (www.mfc.state.ms.us) and producing the agency's newsletter (*MFC News*).

Public Outreach / Conservation Education

The Public Outreach / Conservation Education department maintains an active outreach program designed to educate youth and adults about forestry and related issues, in addition to the agency's mission and services. Local outreach activities such as civic club presentations, forestry field days, and visits to school groups are carried out across the state to reach individuals at the community level. In FY 07, outreach activities reached 31,672 youth and 23,250 adults. Two outreach programs are housed within the Public Outreach /



Conservation Education Department: the Firewise program and the Minority Outreach program. Firewise is an educational program for homeowners and community leaders. This program is for anyone living in, or connected to the wildland/urban interface. Information is available on

how to design, construct, landscape, and maintain a home or community to withstand a wildfire without the aid of firefighting resources on scene.

The Minority Outreach program offers assistance to minority and underserved landowners in Mississippi. This program has three primary goals:

- to provide outreach support and technical assistance to underserved landowners;
- to encourage young people to seek careers in forestry; and
- to work with Alcorn State University to develop and/or enhance projects of mutual forestry interest.

Funded through the Forest Stewardship Program, the Minority Outreach program is a joint project between the MFC, Alcorn State University and the USDA Forest Service.

MFC Outreach by Program Area

Program Area	FY03	FY04	FY05	FY06	FY07
Youth	1,659	1,477	1,719	1,263	960
Adult	747	512	997	810	1,528
Exhibit/Display*	1,008	801	796	512	366
Newsprint	603	615	919	1,087	745
Totals	4,017	3,405	4,431	3,672	3,599

* Reporting category changes in FY05

Urban / Community Forestry

The MFC provides assistance and training to urban areas in developing community forestry programs. This includes support to counties and municipalities on developing tree ordinances, inventorying street trees and writing urban forest management plans. The MFC also provides technical advice to builders on tree preservation during construction and helps homeowners with advice on insects, diseases and other tree care problems.

In FY07, the MFC's Urban / Community Forestry department administered two grant programs that provided financial assistance grants totaling \$485,640 to state and local governments, non-profit groups, and educational institutions. The Urban and Community Forestry Assistance Grant

In FY07, the MFC's Urban / Community Forest Assistance Program awarded the Mississippi State University Cooperative Extension Service a \$30,000 grant to provide training for 50 individuals to qualify as Certified Arborists.

Program, funded through the USDA Forest Service, provides funding administration, demonstration projects and educational programs.

The Transportation Enhancement Tree Planting Program successfully completed its eighth year of providing matching grants to any unit of state or local government for the purpose of planting trees to enhance transportation.

The MFC responded to 4,856 requests from cities, communities, and homeowners for urban forestry assistance during FY07.

Projects must have a direct relationship to the transportation system and be in close proximity to a public transportation corridor or facility. This program is administered by the MFC with financial support from the Mississippi Department of Transportation.

Providing leadership, financial aid and technical support to the Mississippi Urban Forest Council is a major function of the MFC's urban forestry effort. The agency worked jointly with this volunteer organization to produce an urban forestry newsletter, conduct a statewide conference and carry out a statewide awards program and Arbor Day poster contest.

Champion Tree Program

Champion Trees of Mississippi is the official publication of the Mississippi Champion Tree Program. It lists the largest reported trees of various species growing in the state. The list has been maintained by the MFC since the program's beginning in 1972. Currently, 163 trees are registered as Mississippi champions, nine of which are



2007 Arbor Day Poster Contest Winner

also national champions and five are national co-champions.

Tree City USA is a national recognition program that provides a basis for a good community forestry program. The Tree City USA program is administered in Mississippi by the MFC. In calendar year 2006, 27 cities were awarded Tree City USA status:

Biloxi	Leakesville
Cleveland	Long Beach
Columbus	Lucedale
Columbus Air Force Base	Meridian
Como	Newton
Ellisville	Ocean Springs
Gautier	Olive Branch
Greenwood	Oxford
Greenville	Pearl
Grenada	Senatobia
Hattiesburg	Tunica
Horn Lake	Tupelo
Keesler AFB	Winona
Laurel	

Business Support

As a result of the reorganization, Administrative Services was renamed Business Support and now consists of three service-oriented departments: Financial Services, Information Systems, and Purchasing.

Financial Services

Financial records of the MFC are maintained in accordance with accepted accounting procedures and conform to state and federal law as defined by the Comptroller, Examiners of Public Accounts and the USDA Forest Service. MFC FY07 Income and Expense Statement and financial highlights can be found on pages 14 - 15.

Information Systems

During FY07, Information Systems provided maintenance and technical support



MFC Website

to the MFC's network of computers. Improvements and updates to the MFC's website were made throughout the year. The website is accessible by the public and employees through the website: www.mfc.state.ms.us. During periods of high fire danger, the website is used to provide public service information, including daily fire report and news releases. The Intranet section of the website has become very useful in providing updated forms and documents to employees. The website is managed as a joint project between the Information Systems and Forest Information / Public Outreach. The MFC's website was revised and released at the end of FY07.

Purchasing

The Purchasing department is responsible for ensuring the MFC follows all state purchasing laws and requirements. Providing purchasing-related assistance to the agency's administrative districts and program areas is an essential function of the department.

Human Resources

The MFC's Human Resources department strives to maintain a total personnel administration program for the entire agency. In FY07, the MFC had 585 full-time and 54 part-time authorized employee

MFC Positions

	FY 2005	FY 2006	FY07
Part Time	653	553	585
Full Time	58	33	54
Total	711	586	639

positions. This was an increase of 32 full-time and 21 part-time positions from FY06 mainly due to Katrina-related issues and programs.

Safety & Training

The Safety and Training department stresses the importance of safety in all programs of the MFC. Providing tools, techniques and training necessary for employees to work safely and effectively is essential to enhancing job skills and fostering personal development and growth. Continuing education and training opportunities were available for each employee in FY07.



Mississippi Forestry Commission

Fiscal Year 2007 Revenue

	FY 2007	FY 2006	Increase/ (Decrease)
Income:			
48000 General Funds	\$ 18,140,319.01	\$ 16,845,254.99	\$ 1,295,064.02
40260 Severance Tax	2,760,793.13	2,993,071.17	(232,278.04)
40440 Acreage Tax	1,361,422.88	1,364,455.30	(3,032.42)
41460 Miscellaneous Income	4,420.51	4,785.50	(364.99)
43010 Hardwood Seedling Sales	5,167.00	258,766.00	(253,599.00)
43011 Pine Seedling Sales	658,089.50	453,327.72	204,761.78
43100 Rent of State Property	57,606.00	50,356.51	7,249.49
43170 Rent of Office Space	-	300.00	(300.00)
44080 Forestry Programs ¹	13,502,441.98	2,709,140.60	10,793,301.38
44500 Donations ²	(1,000.00)	3,000.00	(4,000.00)
44630 Red Sub Grants Rec	205,568.99	542,115.32	(336,546.33)
45010 Crew Assistance - Private Lands	594,602.02	582,206.92	12,395.10
45020 Crew Assistance - Public Lands	989,455.64	831,488.38	157,967.26
46000 Sale of Real Estate	3,000.00	90,503.00	(87,503.00)
46010 Sale of Personal Property	42,675.80	259,055.75	(216,379.95)
46020 Sale of Scrap	2,988.90	2,735.87	253.03
46030 Other Sales ³	107,993.69	2,424.91	105,568.78
49305 5 Year Cancelled Warranty Returned	1,993.27	13.47	1,979.80
Net Revenue	\$ 38,437,538.32	\$ 26,993,001.41	\$ 11,444,536.91
Accounts Receivable:			
Billable Services		219,510.00	
Federal Reimbursements	-	619,776.14	
Net A/R	\$ -	\$ 839,286.14	
TOTAL REVENUE	\$ 38,437,538.32	\$ 27,832,287.55	

¹ FY 07 Forestry Program income includes 7,377,123 Katrina supplemental funds; \$2,420,000 Emergency Forestry CRP.

² FY 07 Donations include arson rewards paid of \$500 each (revenue was offset by expense).

³ FY 07 Other Sales includes reimbursement from other Compact states (Georgia and Florida) for fire fighting assistance.

Revenues



General Funds- 46%
Forestry Programs- 35%
Severance Tax- 7%
Acreage Tax- 4%
Crew Assistance - Public Lands- 3%
Pine Seedling Sales- 2%
Crew Assistance - Private Lands- 2%
Red Sub Grants Received- 1%
Other Sales- less than 1%
Rent of State Property- less than 1%
Sale of Personal Property- less than 1%
Hardwood Seedling Sales- less than 1%
Miscellaneous Income- less than 1%
Sale of Real Estate- less than 1%
Sale of Scrap- less than 1%
5 Year Cancelled Warranty Returned- less than 1%

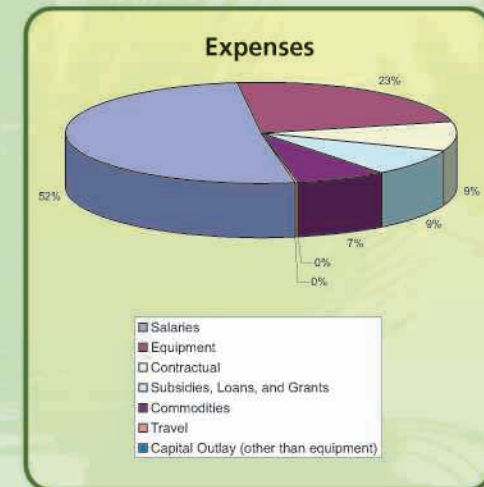
MFC FY07 Fiscal Recap

Category	FY07 Authority	FY07 Expenses
Salaries	\$22,513,350	\$19,397,426
Travel	\$118,000	\$117,951
Contractual	\$4,221,580	\$3,607,202
Commodities	\$2,946,580	\$2,800,901
Equipment	\$8,944,289	\$8,905,828
Other Than Equipment	\$110,992	\$37,218
SLG	\$2,727,500	\$3,305,418
Totals	\$41,582,291	\$38,171,944

Note - Budget includes \$7.4 million of hurricane supplemental federal funds.

Mississippi Forestry Commission Fiscal Year 2007 Expense

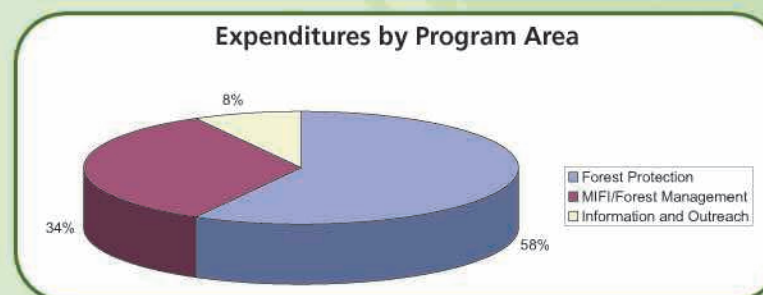
Expense:	FY 2007	FY 2006	Increase/ (Decrease)
Salaries	\$ 19,397,426.39	\$ 18,172,994.58	\$ 1,224,431.81
Travel	117,950.96	89,981.81	27,969.15
Contractual	3,607,202.46	2,653,217.55	953,984.91
Budget Contingency			
Software Acquisition ⁴	167,201.26		
Other Fees & Services	1,226,763.37		
Repair & Service - Equipment, Vehicle	227,555.45		
Electricity	209,160.86		
Capital Facilities	112,266.00		
Other Contractual Items	1,645,860.93		
Encumbrances	-	-	-
Commodities	2,800,901.19	2,449,734.37	351,166.82
Procurement Card	214,383.66		
Fuels - Gasoline	499,373.42		
Fuels - Diesel	439,228.10		
Lube, oil, grease, tires	143,845.06		
Repair vehicles	185,617.01		
Other Commodities	1,318,453.94		
Encumbrances	-	-	-
Equipment ⁵	8,905,828.12	1,100,837.97	7,804,990.15
Encumbrances	-	-	-
Capital Outlay other than equipment	37,218.00	16,310.00	20,908.00
Encumbrances	-	-	-
Subsidies, Loans, and Grants ⁶	3,305,418.40	3,206,509.22	98,909.18
Encumbrances	-	-	-
TOTAL EXPENSE	\$ 38,171,945.52	\$ 27,689,585.50	\$ 10,482,360.02
NET	\$ 265,592.80	\$ 142,702.05	



⁴ FY 07 Other Fees and Services included Emergency Forestry CRP contract workers.

⁵ Equipment expense for FY 07 included Pumper Units \$288,925; 21 Tandem trucks and dozers \$4,366,742; Transports \$213,258; Dozers \$302,542; Master Lease.

⁶ FY 07 Subsidies, Loans and Grants included \$200,000 Department of Agriculture Beaver Control Fund; VFA grants and FRDP grants.



Hurricane Katrina Recovery Update 2007

When Hurricane Katrina ravaged Mississippi's southernmost counties in 2005, the federal government appropriated \$11.8 million in supplemental funding to the MFC to aid in recovery of lost forest resources. Beginning in FY06 and continuing through FY07, recovery projects funded through this program include:

- Enhancing wildfire protection and mitigation projects.
- Awarding urban and community recovery grants.
- Conducting a reinventory of Sixteenth Section forestlands.
- Providing Volunteer Fire Assistance grants and County Wildfire Prevention Plans.
- Keeping the public informed of forest health issues.



Satellite image of Hurricane Katrina landfall

FY07 Highlights

Fire Equipment: The MFC increased capacity for wildfire preparedness by purchasing 34 One-Ton Pumper Units, 21 D-5 Fire Units and two large Mitigation Dozers totaling \$5,171,467.



Urban Forest Recovery: \$1.32 million in 34 grants were awarded to help communities replace tree cover lost and address tree health issues.

Urban Forest Council: The UFC established a grant to provide tree nursery assistance for hurricane impacted communities to replant their urban forest. Over 2,500 trees were containerized by sister cities and delivered to the Coast.

Wildfire Prevention Plans: The MFC partnered with Southern Mississippi Planning and Development District to prepare County Wildfire Prevention Plans, based on the Southern Wildfire Risk Assessment data in the 15 southern

most counties. This program involves each volunteer fire department and the county fire/emergency coordinator. A mass media fire campaign accompanied this program that included TV, radio, billboard and newsprint ads.

Fire Mitigation: The MFC fire crews reached nearly half of the three-year goal of 750 miles of permanent firebreaks under the Katrina fire mitigation program.

Communicating Recovery Success: The MFC provided grants to the Mississippi Forestry Association and the Mississippi Urban Forest Council to promote Katrina success stories for urban and rural forest recovery, as well as host field days to showcase these successes.

Landowner Information: The MFC also partnered with the MSU Cooperative Extension Service to reproduce the *Managing the Family Forest* booklet to include all-aged management and longleaf restoration as an option to Katrina damaged stands.

Volunteer Fire Assistance: The MFC awarded Volunteer Fire Assistance grants to 60 Volunteer Fire Departments totaling \$626,500.



Katrina "tree"

FY07 MFC Board of Commissioners

Robert E. "Bob" Cox

Chairman

1732 Douglastown Road
Maben, MS 39750
Fax Number: (662) 324-3183
Home Phone: (601) 324-0194
Cell Phone: (901) 488-3795
Email: bob.cox@tembec.com
*Term Expires: June 30, 2008

Donald C. Simmons

Vice-Chairman

1929 Robinson Road
Crawford, MS 39743
Home Phone: (662) 272-9554
Cell Phone: (662) 341-0973
Email: ganddsimmons@aol.com
*Term Expires: June 30, 2007

Al Alexander

Desoto Logging, Inc.
P.O. Box 460
Wiggins, MS 39577
Office Phone: (601) 928-4133
Fax Number: (601) 928-5091
Email: desotoland@datasync.com
*Term Expires: June 30, 2009

James Cummins

MIFI Representative

P.O. Box 10
Stoneville, MS 38776
Office Phone: (662) 686-3375
Fax Number: (662) 666-4780
Home Phone: (662) 686-4592
Cell Phone: (662) 820-5703
Email: jcummins@wildlifemiss.org
*Term Expires: non-expiring

Larry Homan

P.O. Box 39
Fulton, MS 38843
Office Phone: (662) 862-2125
Fax Number: (662) 862-4900
Home Phone: (662) 862-2208
Cell Phone: (662) 891-2208
Email: tristate@intop.net
*Term Expires: June 30, 2012

Dr. George Hopper

Ex-Officio

Mississippi State University
Box 9680
Mississippi State, MS 39762-9680
Office Phone: (662) 325-2953
Fax Number: (662) 325-0015
Email: ghopper@cfr.msstate.edu
*Term Expires: non-expiring

Allen Jones, Jr.

1045 Allen Jones Road
Lorman, MS 39096
Home Phone: (601) 877-3814
*Term Expires: June 30, 2007

Glenn Sowell

210 Huntview
Brandon, MS 39042
Office Phone: (601) 683-2018
Home Phone: (601) 825-5027
Email: glen.sowell@farmcreditbank.com
*Term Expires: June 30, 2012

Richard Thoms

105 N. Lane Street
Newton, MS 39345
Office Phone: (601) 683-2572
Fax Number: (601) 683-2573
Home Phone: (601) 683-3126
Cell Phone: (601) 209-6830
Email: rthoms@rttllc.com
*Term Expires: June 30, 2011

Art Waymire

6181 Hernando Road
Byhalia, MS 38611
Home Phone: (662) 838-8289
Cell Phone: (901) 488-3290
Email: foxden14@aol.com
*Term Expires: June 30, 2010

** Members, by statute, may serve until they are replaced after their expiration date.*

MFC Administrative Districts and Area Offices

Northeast District

Brendix Glasgow, District Forester
1711 McCullough Boulevard P.O. Box 703
Tupelo, MS 38802
Phone: (662) 842-5312 Fax: (662) 680-9999

Columbus Area Office

717 5th Street North Columbus, MS 39701
Phone: (662) 327-3352 Toll Free: (866) 250-4507
Fax: (662) 327-3352
Serving Choctaw, Clay, Lowndes, Noxubee, Oktibbeha, Webster and Winston Counties.

Oxford Area Office

103 Veterans Drive Oxford, MS 38655
Phone: (662) 234-1182 Toll Free: (866) 250-4505
Fax: (662) 234-7434
Serving Benton, Calhoun, Chickasaw, Lafayette, Marshall, Pontotoc and Union Counties.

Tupelo Area Office

1711 McCullough Boulevard P.O. Box 703
Tupelo, MS 38802
Phone: (662) 841-2479 Fax: (662) 841-2479
Serving Alcorn, Itawamba, Lee, Prentiss, Monroe, Tippah and Tishomingo Counties.

South Central District

Jack White, District Forester
2705 Highway 15 South P.O. Box 348
Bay Springs, MS 39422
Phone: (601) 764-2711 (601) 764-3061
Fax: (601) 764-3037

Laurel Area Office

2705 Highway 15 South P.O. Box 348
Bay Springs, MS 39422
Phone: (601) 764-2711 or (601) 764-3061
Fax: (601) 764-3037
Serving Clarke, Covington, Jasper, Jones, Smith and Wayne Counties.

Philadelphia Area Office

14941 Hwy 16 West P.O. Box 429
Philadelphia, MS 39350
Phone: (601) 656-1381 Fax: (601) 656-9247
Serving Kemper, Lauderdale, Leake, Neshoba, Newton and Scott Counties.

Southeast District

Mark Hamilton, District Forester
1528 Azalea Drive P.O. Box 430
Wiggins, MS 39577
Phone: (601) 928-5261 Fax: (601) 928-3174

Gulfport Area Office

14601 County Farm Road Gulfport, MS 39503
Phone: (228) 831-3359 Fax: (228) 831-3360
Serving George, Hancock, Harrison and Jackson Counties.

Wiggins Area Office

214 N. Critz Street Wiggins, MS 39577
Phone: (601) 928-7612 Fax: (601) 928-3883
Serving Greene, Forrest, Lamar, Pearl River, Perry and Stone Counties.

Southwest District

Randy Chapin, District Forester
515 County Farm Lane NE P.O. Box 749
Brookhaven, MS 39602-0749
Phone: (601) 833-6621 (601) 833-2598
Fax: (601) 835-0188

Pearl Area Office

3139 Hwy 468 Pearl, MS 39208
Phone: (601) 420-6010 Toll Free: (866) 250-5147
Fax: (601) 420-6012
Serving Claiborne, Copiah, Hinds, Madison, Rankin and Warren Counties.

Bogue Chitto Area Office

214 First Street Brookhaven, MS 39601
Phone: (601) 833-8563 Toll Free: (866) 250-5455
Fax: (601) 835-5089
Serving Jefferson Davis, Lawrence, Lincoln, Marion, Simpson and Walthall Counties.

Homochitto Area Office

185 Irene Street P.O. Box 242 Liberty, MS 39645
Office: (601) 657-8754
Toll Free: (866) 250-6269 Fax: (601) 657-9251
Serving Adams, Amite, Franklin, Jefferson, Pike and Wilkinson Counties.

Northwest District

Bobby Edwards, District Forester
1801 Highway 51N P.O. Box 668
Elliott, MS 38926
Phone: (662) 226-3321 Fax: (662) 226-0170

Batesville Area Office

108 Bethlehem Road P.O. Box 285
Batesville, MS 38606
Phone: (662) 563-3824 Toll Free: (866) 250-4531
Fax: (662) 563-2247
Serving Coahoma, De Soto, Panola, Tallahatchie, Tate, Tunica, Quitman and Yalobusha Counties.

Grenada Area Office

50 East Pecan Street, Suite A Grenada, MS 38901
Phone: (662) 226-1973 Toll Free: (866) 250-4696
Fax: (662) 226-0817
Serving Bolivar, Carroll, Grenada, Humphreys, Leflore, Montgomery, Sunflower and Washington Counties.

Kosciusko Area Office

715 Fairground Road P.O. Box 576
Kosciusko, MS 39090
Phone: (662) 289-2627 Toll Free: (866) 250-4722
Fax: (662) 289-2627
Serving Attala, Holmes, Issaquena, Sharkey and Yazoo Counties.

Mississippi Forestry Commission

301 North Lamar Street, Suite 300
Jackson, Mississippi 39201
Charlie Morgan, State Forester
(601) 359-1386 Phone
(601) 359-1349 Fax
www.mfc.state.ms.us