

MISSISSIPPI FORESTRY COMMISSION

2008

A YEAR OF ACCOMPLISHMENT

ANNUAL REPORT

{ The mission of the Mississippi Forestry Commission is to provide active leadership in forest protection, forest management, forest inventory and effective forest information distribution necessary for Mississippi's sustainable forest-based economy. }





THE MISSISSIPPI FORESTRY COMMISSION
HAS PROVIDED FOREST PROTECTION AND
FOREST MANAGEMENT TO MISSISSIPPI
LANDOWNERS SINCE 1926.

Message From the State Forester	1	2	Introduction & District Map
MFC's New Organizational Chart	3	4	MS Institute for Forestry Inventory/ Management
Private Lands	4	5	Forest Legacy/Assessment of Need
Forest Resource Development	5	5	Forest Stewardship Program
Public Lands	6	6	Sixteenth Section Lands
Forest Health	7	8	Fire Services
Aviation	8	8	Communications
Federal Excess Personal Property Program	9	9	Volunteer Fire Assistance Program
Fire Law Enforcement	10	11	Information and Public Outreach
Minority Outreach Program	11	12	Urban & Community Forestry Program
Champion Tree Program	12	13	Business Support
Financial Services	13	13	Information Systems
Human Resources	13	13	Safety & Training
Revenue Report	14	15	Expense Report
FY08 Highlights	16		

Contact information for the Board of Commissioners and district offices is located on the back cover.

The Mississippi Forestry Commission provides equal employment opportunity and services to all individuals regardless of disability, race, age, religion, color, gender, creed, national origin or political affiliation.
This institution is an equal opportunity provider.

2008 - A YEAR OF ACCOMPLISHMENT



Charlie Morgan
State Forester

This past year the Mississippi Forestry Commission achieved many goals to strengthen our service and sustain our state's forest-based economy.

For more than 82 years, the MFC has fulfilled its mission to the state by providing active leadership in forest protection, management, inventory and effective information distribution. The commission's primary responsibilities are to provide the following: statewide wildfire protection on nearly 19 million acres of forestland; active forest management on 16th Section School Trust Lands and other non-federal public lands; and technical assistance to the state's private nonindustrial forest landowners.

In an effort to deliver more effective service to the public, MFC implemented an agency-wide reorganization in July 2008. Forest management programs are now closer to the landowners, and fire fighting equipment is better aligned with areas of high fire occurrence and heavy forestry workload.

This year the commission prepared the first statewide comprehensive forest assessment of School Trust Lands. Totalling approximately 480,000 acres, this state-owned land generates revenue that is used by local public school districts to enhance the educational experience of their students. This assessment will greatly assist us by strengthening timber management and ultimately increasing revenue on 16th Section lands.

The MFC is recognized as a forest technology leader among other southern state and federal forestry agencies. With federal hurricane recovery funds, the commission developed two unique software products at no cost to the state: a GIS application called SIMSMap (Spatial Information Management System); and a forest management plan developer called PlanWriter. The commission is also using a harvest scheduler called Woodstock that foresters can use for planning from one year to the next.

We appreciate our partners who helped implement programs and provide the services detailed in this report including: Mississippi State University; the Mississippi Development Authority; the USDA Forest Service; the USDA Farm Services Agency; the USDA Natural Resources Conservation Service; the Mississippi Urban Forest Council; the Mississippi Forestry Association; volunteer fire departments; planning and development districts; private sector forestry consultants; and, several other natural resources-related organizations.

I thank our state leaders, commission, staff, partners and customers in helping us accomplish so much this year. Please contact us anytime for assistance.

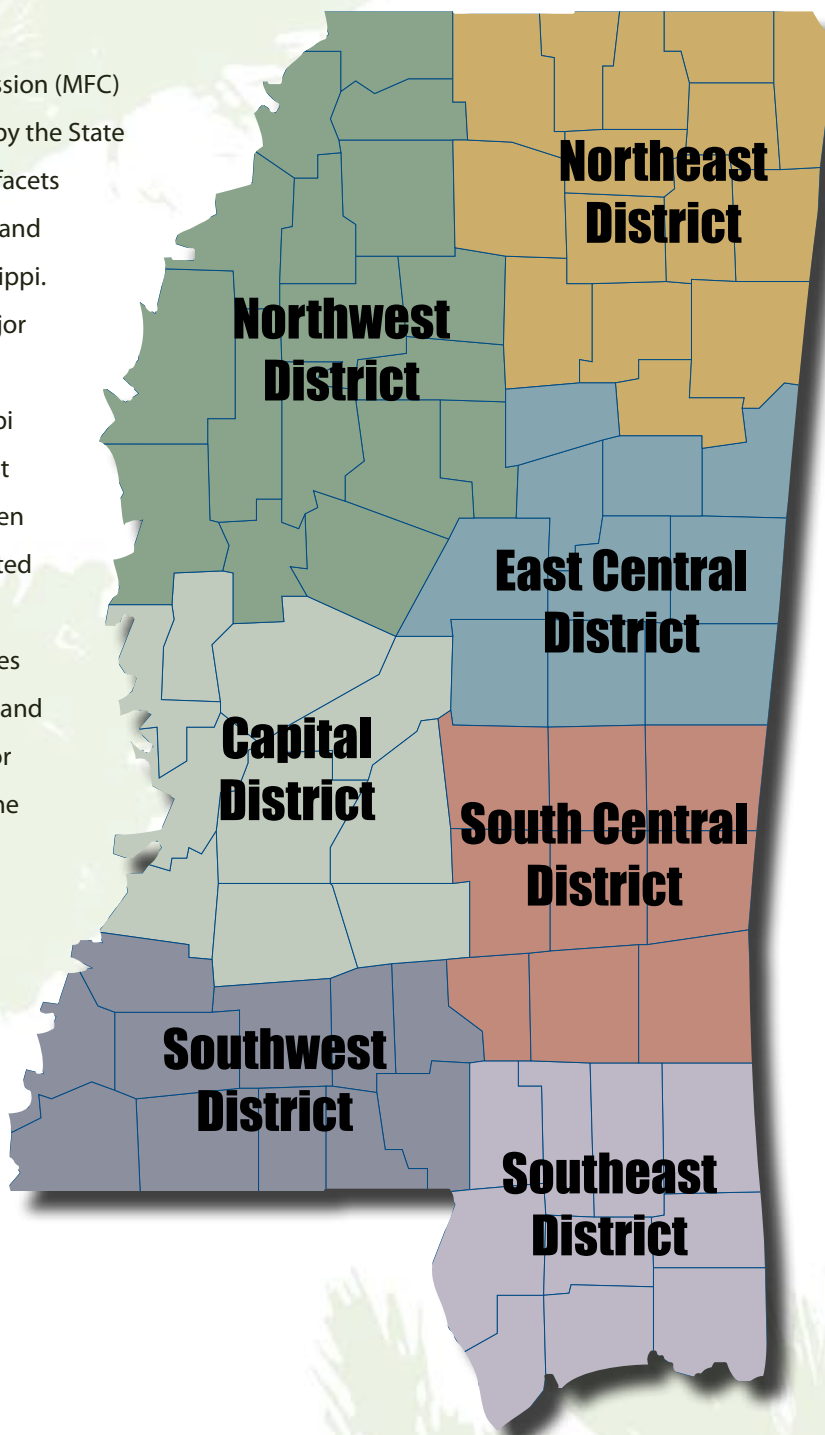
Charlie Morgan
State Forester

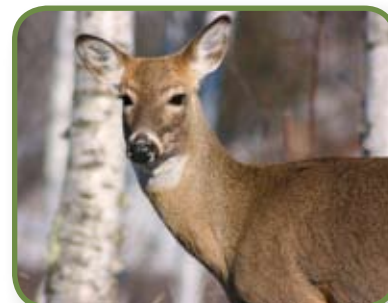
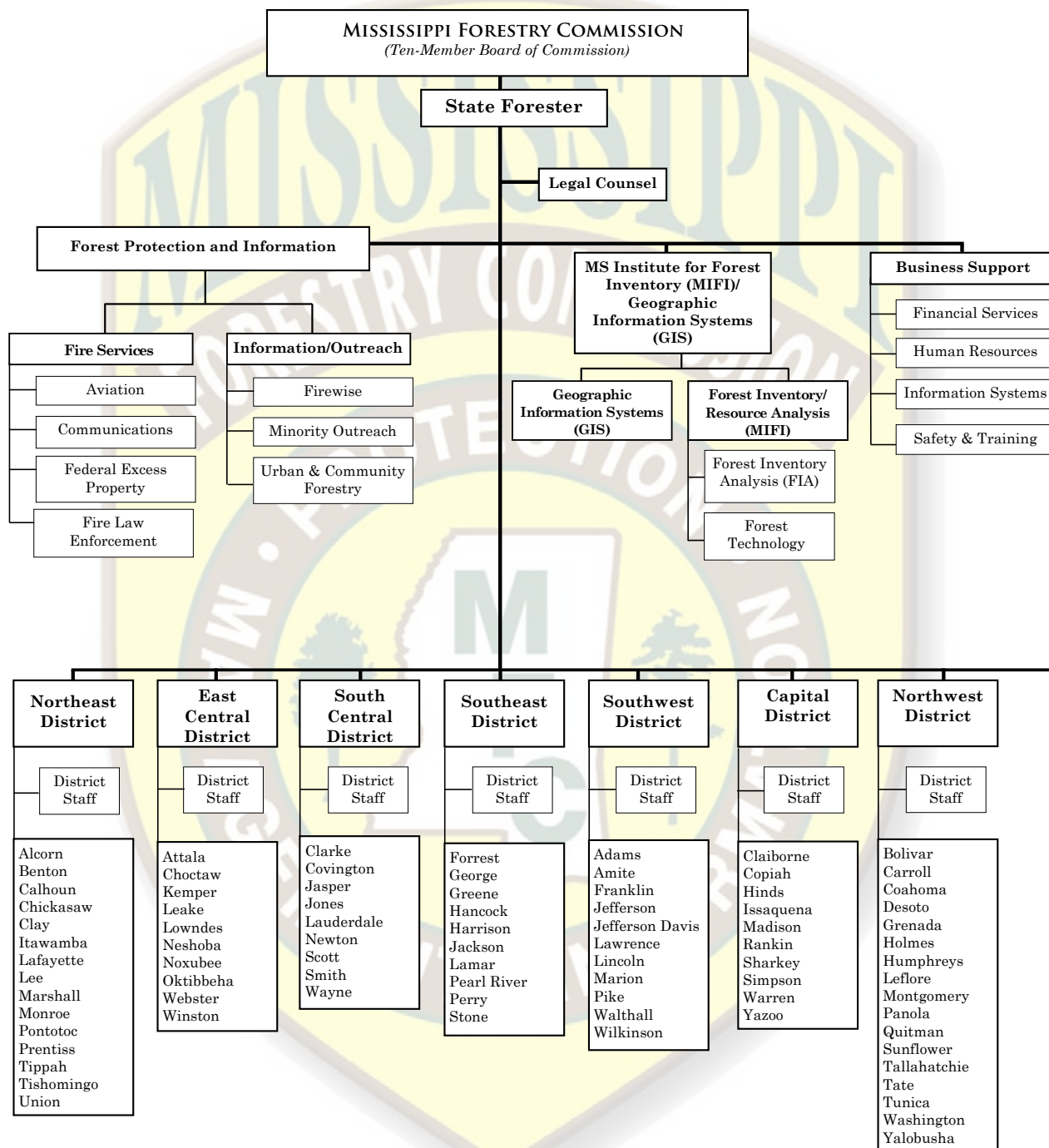
A handwritten signature in dark ink, appearing to read 'Charlie Morgan', written over the printed name and title.



MISSISSIPPI FORESTRY COMMISSION ADMINISTRATIVE DISTRICTS

The Mississippi Forestry Commission (MFC) is a public service agency created by the State Legislature and responsible for all facets of forest protection, management and information for the state of Mississippi. The agency is divided into two major program areas: Forest Protection and Information and the Mississippi Institute for Forest Inventory/Forest Management. These areas and seven administrative districts are supported by Business Support and Legal Counsel. This annual report provides an overview of each program area and highlights our accomplishments for Fiscal Year 2008 (July 1, 2007 to June 30, 2008).





MS INSTITUTE FOR FOREST INVENTORY

The Mississippi Institute for Forest Inventory/Forest Management provides direction and support to several program areas carried out on private and public lands.

In 2006, the Mississippi Legislature passed a law that brought the Mississippi Institute of Forest Inventory (MIFI) under the oversight of the MFC. Both MIFI and MFC's Forest Management Division dealt with forest inventory; by consolidating these activities, the agency eliminated duplication of work in particular areas and also allowed each department to capitalize on the other's strengths and become a stronger organization.

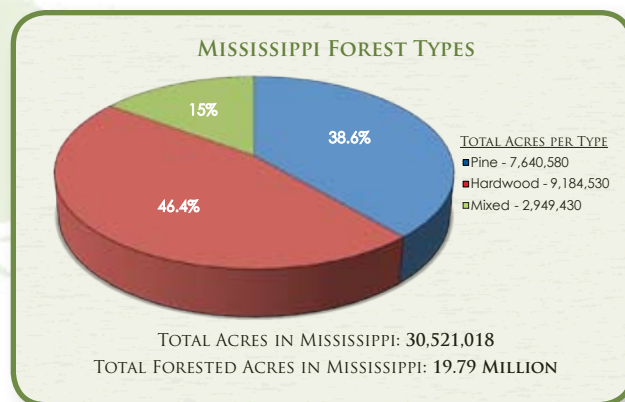
MFC's Resource Analysis program oversees the development, implementation, and management of the agency's geographic information system. This is a statewide system that is utilized by fire, public lands, private lands, and urban and community forestry programs.

In an effort to promote economic development of the state's forest resources, MIFI, in conjunction with the Mississippi Development Authority (MDA), provides forest resource information and maps for economic development. A statewide assessment of forest resources is maintained utilizing satellite imagery to estimate forest removals, regeneration and developmental stages of forest cover.

In FY08, MIFI completed a baseline forest inventory for 80% of Mississippi with the remaining to be completed in 2009. In addition, MIFI responded to numerous requests for resource analyses for ethanol conversion and wood pellet facilities.

FOREST MANAGEMENT

The MFC is charged in Mississippi Code Section 49-19-3 to promote sound forest management practices which maintain the integrity of the environment and provide for our state's future natural resource needs. The MFC offers a variety of forest management services to private landowners and public forestlands of Mississippi such as 16th Section Lands and other state agency properties.



PRIVATE LANDS

MFC provides technical and financial assistance to private nonindustrial forest landowners (PNIFs) in Mississippi. Of the state's 19.79 million acres of forestland, 77 percent, or more than 13 million acres, belongs to an estimated 350,000 PNIFs with parcels of 10 acres or greater. MFC provides technical financial assistance to PNIFs through programs designed to enhance and protect natural resources.

FY08 STATEWIDE ACCOMPLISHMENTS

Private Lands (Landowners Assisted)	16,868
Seedlings Sold	12,739,050*
Acres Regenerated or Improved	
Forest Resource Development Program	47,282
Federal Forestry Programs	3,643
Public Land Activities	
Timber Sale Receipts	\$10,185,340**
Acres Regenerated	3,475
Forest Management Plans	
Plans	1,400
Acres	76,285
Prescribed Burning (Acres)	
Private Lands	23,605
Public Lands	12,297
Total	35,902

* In FY08, the Forestry Commission discontinued nursery production of tree seedlings and permanently closed all nursery and seed orchard facilities. The number of seedlings sold (listed above) represents the final tree seedling crop produced by the Commission.

** Includes School Trust Lands and other public lands.

FOREST LEGACY PROGRAM

The Forest Legacy Program (FLP) was authorized by the 1990 Food, Agriculture, Conservation and Trade Act to identify and protect environmentally important, private forestlands threatened with conversion to non-forest uses. FLP is a USDA Forest Service program in partnership with Mississippi that will help support local efforts to protect environmentally sensitive, privately owned forestlands threatened by conversion to non-

forest use through land acquisition and conservation easements.



ASSESSMENT OF NEED (AON)

In 2008, MFC began implementing the 2007-2011 Assessment of Need (AON). The AON is a statewide plan for implementing the Forest Legacy Program that identifies areas where important natural forest communities exist on private lands that are potentially threatened by conversion from urban and suburban growth or other threats. The Assessment of Need recommends these areas of the state be designated as Forest Legacy Areas so that willing landowners may nominate their property as a possible Forest Legacy Tract. The MFC administers the FLP with funding from the USDA Forest Service.



FOREST RESOURCE DEVELOPMENT

The Forest Resource Development Program (FRDP) was established in 1974 by the Mississippi Legislature for developing the state's forest economy. This program provides cost-share funding for tree planting and forest improvement practices for the purpose of long-term timber production. This program helps offset a landowner's expense by sharing the cost of implementing specific forestry practices designed to produce timber and enhance wildlife development. Cost-share payments cover 50 to 75 percent (depending on the practice) of the total cost of implementing one or more forestry practices, with a maximum limit set for each individual practice. Eligible landowners can receive up to \$7,000 of FRDP assistance a year. In turn, a landowner agrees to protect the area receiving FRDP assistance from fire and grazing and to properly manage the area for a minimum of ten years.

Over two million dollars each year is distributed to private forest landowners in Mississippi through the Forest Resource Development Program, which provides cost sharing for tree planting and forest improvements.

FOREST STEWARDSHIP PROGRAM

The Forest Stewardship Program promotes natural resource planning on private, nonindustrial forestlands. Landowners not currently under forest management are encouraged to utilize stewardship management through the development and implementation of a Forest Stewardship Management Plan, which is based on sound management principles designed to restore and protect forest resources and water quality and to improve fish and wildlife habitats.

The Forest Stewardship Program is funded by the USDA Forest Service. The program is carried out by MFC through its Forest Stewardship Committee. Technical assistance is provided by local, federal, state, and private natural resource agencies and organizations. The State Plan for the Mississippi Forest Stewardship Program provides the framework for how the Forest Stewardship Program is conducted in Mississippi. The plan also contains stewardship background, guidelines, and forms for landowners and resource professionals.



MANAGING PUBLIC LANDS

The MFC provides management assistance to boards, agencies, and other entities having jurisdiction over approximately 480,000 acres of non-federal public forestlands in Mississippi. MFC is responsible for: managing two state forests, Kurtz and Camden; managing School Trust Lands; and rendering assistance to the various agencies, boards, departments and other entities having jurisdiction over state and other public lands in Mississippi.

The Mississippi Forestry Commission is a nationally recognized leader in forest management technology. This year several unique software products were created specifically for forestry management through hurricane recovery federal funding and at no cost to the state.

- A Geographical Information System (GIS) application called Spatial Information Management System (SIMSMap);
- A computer-driven forest management plan developer called PlanWriter;
- A harvest scheduler called Woodstock, which takes data from SIMSMap and creates a statewide harvest plan to carry out management activities from one year to the next.



The revenue from timber sales on School Trust Lands in FY08 totaled \$10.2 million.



Sixteenth Section Lands

The Forestry Commission is charged by state law to manage forested School Trust Lands, commonly referred to as Sixteenth Section lands located in 67 counties. In addition to timber production, management considerations also include wildlife, soil and water quality, aesthetics and other appropriate benefits of forestlands. The revenue from timber sales on School Trust Lands and other public lands in FY08 totaled \$10.2 million.

Over the past year, the agency has converted all its management data into a GIS system to help prepare the first comprehensive Sixteenth Section Land Assessment. This assessment, together with more intensive forest management practices, could raise timber-generated revenues to \$30 million per year or more depending on favorable markets.

Anticipating future needs, the MFC has taken the necessary steps to ensure that all School Trust Lands are managed sustainably and best management practices are used on all lands. FY08 highlights include:

- Converted all School Trust Land to a statewide GIS-based system;
- Conducted a statewide forest inventory on all School Trust forestland;
- Developed a statewide management database system for developing management plans as well as for planning, tracking, monitoring, and reporting forest practices and activities on School Trust forestland.

FOREST HEALTH

MFC provides forest pest detection, evaluation and control recommendations for all private and state-owned timberlands, as well as urban areas. The agency conducts at least one statewide aerial survey each year and additional surveys when needed. Insect and disease spots are ground checked to determine the exact cause and extent of damage.

Timber damage from forest insects and disease has been very light for FY08 compared to previous years. However, the southern pine beetle kills more pine timber in the South than any other forest insect. As a result, the MFC has partnered with the MSU Extension Service to carry out a Southern Pine Beetle Landowner Incentive Program designed to provide a financial incentive to landowners who apply southern pine beetle management practices.

The second leading insect to kill pine timber in the South is the Ips engraver beetle. Drought conditions and stress from severe winds can cause the Ips engraver beetle populations to increase dramatically.

In FY08, the MFC developed and launched a plan to mitigate the damage caused by invasive non-native plant species to the state's forestland. The Exotic Invasive Species Plan addresses the detection, identification, information, control and abatement of five species of concern that are either impacting or have the greatest potential to impact the forest resource of Mississippi. These species are cogongrass (*Imperata cylindrica*); Kudzu (*Pueraria Montana*); Chinese tallowtree (*Sapium sebifera*); Chinese/European privet (*Ligustrum sinense*); Japanese/glossy privet (*Ligustrum japonicum*); and Japanese climbing fern (*Lygodium japonicum*). The plan also addresses the need to develop partnerships with other agencies and organizations to achieve common goals in regard to invasive species.



Southern Pine Beetle Trap



Southern Pine Beetle



Checkered Beetle

FIRE SERVICES

The Fire Services Division includes four departments: Aviation, Communications, Federal Excess Personal Property Program and Fire Law Enforcement.

In 1926, the Mississippi Legislature mandated that the MFC protect the state's forestland from wildfire. At that time, wildfires were consuming more than five million acres of timberland each year.

MFC provides assistance to Mississippi and other states with all weather-related events such as hurricanes, ice storms and large scale wildfires, and also coordinates the management of MFC's firefighting resources within the state.

MFC collects all data needed to make sound decisions and long-range plans to ensure the adequate allocation of resources needed for pre-suppression and suppression of wildfires. MFC manages 13 remote area weather stations (RAWS) strategically located across the state as part of a national grid. These weather stations provide localized forestry and fire-related weather forecast.

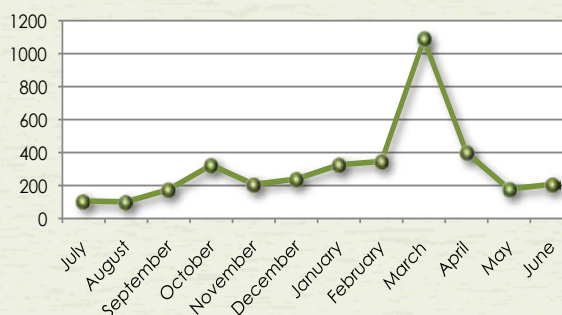
The MFC provides the following weather and fire information on the Web site:

- Fire Danger Rating (USDA Forest Service - Wildland Fire Assessment System (WFAS))
- Current Weather
- Forecast
- Fire Danger Rating and Color Code
- Keach Bryam Drought Index
- MFC Daily Fire Situation Report
- Southern Area Coordination Center (SACC)
- National Weather Service Enhanced Radar Image Loop for the United States
- NWS Enhanced Radar Image Loop for Lower Mississippi Valley Sector
- NWS Fire Weather Report

While great strides in wildfire prevention, detection, and suppression have been made, wildfires still continue to plague the state. There are approximately 3,400 wildfires each year in Mississippi burning more than 58,000 acres.

In FY08, MFC suppressed 2,175 wildfires, which burned 30,153 acres. The average wildfire size for FY08 was 16.3 acres.

NUMBER OF WILDFIRES
(5-YEAR AVERAGE)



In an effort to reduce the number of carelessness-caused wildfires, burn bans are authorized by County Boards of Supervisors and approved by the MFC. Burn ban notifications are listed on the MFC's Web site at www.mfc.state.ms.us.

Aviation

Wildfire detection is provided by airplane surveillance together with the public's reporting of wildfires using toll-free numbers provided by the MFC. Fire suppression crews are dispatched from a central dispatching center located at a district office. MFC's Aviation Department also provides service and support to Forest Health and other forest management programs.

Communications

An essential element of the agency's ability to deploy firefighting resources and maintain situational awareness of wildfire activity is dependable radio communications. The Communications Department is responsible for the maintenance and upgrades to the MFC's communication network which spans across the state. Components of the network include mobile radios in the agency's fleet of vehicles, lightweight hand-held radios for field personnel, and the communication network of radio repeater sites which provide statewide communication from dispatch centers to field personnel.

In FY07, MFC deployed an innovative and state-of-the-art "radio over Internet Protocol" (radio/IP) communication system, which converts radio signals into a digital format and is transmitted in real time through the existing MFC computer network. This communication system is also capable of connecting to approved state government emergency communication networks.

Federal Excess Personal Property Program

Providing assistance to the state's volunteer fire departments has had a significant impact on reducing the number of wildfires in Mississippi. This assistance is available through the Federal Excess Personal Property (FEPP) Program administered by the MFC through an agreement with the USDA Forest Service.

Since 1956, FEPP has allowed the Forest Service to loan property to state forestry agencies for the purpose of wildland and rural firefighting. The Forest Service is authorized and encouraged by the Secretary of Agriculture to loan FEPP to states, and through the states, to local fire forces. Approximately 70 percent of the property involved in the FEPP program in Mississippi is sub-loaned to local fire departments. In FY08, MFC's FEPP issued 78 vehicles with an estimated cost of \$2,886,161.

In FY08, The Mississippi Forestry Commission awarded 82 grants totaling \$221,210.



Volunteer Fire Assistance Program

Formerly known as the Rural Community Fire Protection Program, the Volunteer Fire Assistance Program (VFA) provides grants to eligible rural volunteer fire departments (VFDs) for the purchase of firefighting equipment. The Mississippi Forestry Commission administers this program through an agreement with the national Forest Service. Since 1975, more than 1,000 grants of up to \$2,000 have been issued to VFDs; in FY08, 82 grants were awarded in the amount of \$221,210.



FEPP Vehicle (before)



FEPP Vehicle (after)

FIRE LAW ENFORCEMENT

The MFC and the Mississippi judicial system have the responsibility to pursue the arrest and conviction of woods arsonists, individuals who show little or no concern for Mississippi's citizens and forest resource. They are also charged with pursuing retribution in instances where negligence has caused wildfires that result in the expenditure of state and/or federal funds.

Woods arson has historically been the leading cause of wildfires in Mississippi. In 1993, in an attempt to abate the problem, the Mississippi Legislature established fire law enforcement positions within MFC. The duties and authority of these officers are limited to woods arson. These officers may "... issue citations for any violation of those laws designed for the protection from fire recklessly or with gross negligence being communicated on the lands of another." (Section 49-19-3)

In FY08, MFC investigated approximately 200 arson cases (criminal and civil) and issued five misdemeanor woods arson citations.

Accidental fires, such as escaped control burns and debris burns, are as costly as those set on purpose. Accidental fires, the second most common cause of wildfires in Mississippi, require the same types of actions and resources as arson fires.

FY08 WILDFIRES BY CAUSE

Cause	# Wildfires	Acres Burned
Incendiary (arson)	958	16,117
Debris Burning	869	10,501
Miscellaneous	149	1,076
Re-ignition	68	635
Equipment Use	64	611
Lightning	18	116
Smoking	18	223
Railroad	16	731
Children	11	113
Campfire	4	30
TOTAL	2,175	30,153



Wildfire Origin and Cause Training





FOREST INFORMATION AND PUBLIC OUTREACH

The Information/Outreach Division has three departments: Forest Information, Public Outreach/Conservation, and Urban/Community Forestry.

The Forest Information and Public Outreach Division supports all MFC program areas by providing information, promotional activities and publicity. The division utilizes mass media outlets (e.g., radio, television and print) to release forestry and agency information to the public at large. Multiple delivery methods are used in order to reach the public in the most effective manner.

Forest Information

The Forest Information Department provides support to all MFC programs through the development of displays, exhibits, brochures, and other informational material. The department is responsible for maintaining the MFC Web site www.mfc.state.ms.us and producing the agency's newsletter, MFC News.

MFC OUTREACH PROGRAM

Outreach	FY08
Youth Programs	1,190
Adult Programs	1,100
Exhibits	340
Newsprint	678
TOTAL	3,314

Public Outreach/Conservation Education

The Public Outreach/Conservation Education Department maintains an active outreach program designed to educate youths and adults about forestry and related issues, in addition to the agency's mission and services. Local outreach activities such as civic club presentations, forestry field days and visits to school groups are carried out across the state to reach individuals at the community level. In FY08, outreach activities reached more than 36,000 youths and 120,000 adults. Two outreach programs are housed within the Public Outreach/Conservation Education Department: the Firewise Program and the Minority Outreach Program. Firewise is an educational program for homeowners and community leaders. This program is for anyone living in, or connected to, the wildland/urban interface. Information is available on how to design, construct, landscape and maintain a home or community to withstand a wildfire without the aid of firefighting resources on scene.



The Minority Outreach Program is a joint project between the MFC, Alcorn State University and the USDA Forest Service. The program offers assistance to minority and underserved landowners in Mississippi. This program has three primary goals:

- To provide outreach support and technical assistance to underserved landowners;
- To encourage young people to seek careers in forestry;
- To work with Alcorn State University to develop and/or enhance projects of mutual forestry interest.

Urban/Community Forestry

The MFC provides assistance and training to urban areas in developing community forestry programs. This includes support to counties and municipalities on developing tree ordinances, inventorying street trees and writing urban forest management plans. The MFC also provides technical advice to builders on tree preservation during construction and helps homeowners with advice on insects, diseases and other tree care problems.

In FY08, the MFC's Urban/Community Forestry Program provided financial assistance grants totaling \$294,492 to state and local governments, non-profit groups and educational institutions.

The Urban and Community Forestry Challenge Grant Program, funded through the USDA Forest Service, provides funding for administration, demonstration projects and educational programs.

The Transportation Enhancement Tree Planting Program provides matching grants to state and local governments for the purpose of planting trees to enhance transportation systems. Qualifying projects must be in close proximity to a public transportation corridor or facility. This program is administered by the MFC with financial support from the Mississippi Department of Transportation.

Providing leadership, financial aid and technical support to the Mississippi Urban Forest Council is a major function of the MFC's urban forestry effort. The agency worked jointly with this volunteer organization to conduct a statewide conference and carry out a statewide awards program.

The MFC responded to 3,986 requests from cities, communities and homeowners for urban forestry assistance during FY08.



2008 Arbor Day Poster Contest Winner

CHAMPION TREE PROGRAM

Champion Trees of Mississippi, the official publication of the Mississippi Champion Tree Program, records the largest trees of various species growing in the state. Currently, 163 trees are registered as Mississippi Champions, nine of which are also national champions and five are national co-champions.

TREE CITY USA AWARDS

Tree City USA is a national recognition program that provides a basis for a good community forestry program. The Tree City USA Program is administered in Mississippi by the MFC. In the calendar year of 2007, 28 cities were awarded Tree City USA status:

Biloxi	Hattiesburg	Olive Branch
Cleveland	Horn Lake	Oxford
Columbus	Keesler AFB	Pearl
Columbus AF Base	Laurel	Sandersville
Como	Leakesville	Senatobia
Ellisville	Long Beach	Tunica
Greenwood	Lucedale	Tupelo
Greenville	Meridian	Wiggins
Grenada	Newton	Winona
	Ocean Springs	

BUSINESS SUPPORT

Business Support consists of four service-oriented departments: Financial Services, Information Systems, Human Resources and Safety/Training.

Financial Services

Financial records of the MFC are maintained in accordance with accepted accounting procedures and conform to state and federal law as defined by the Comptroller, Examiners of Public Accounts, and the USDA Forest Service. MFC FY08 Income and Expense Statement and financial highlights can be found on pages 14 & 15.

A component of Financial Services, the Purchasing Department is responsible for ensuring that the MFC follows all state purchasing laws and requirements. Providing purchasing-related assistance to the agency's administrative districts and program areas is an essential function of the department.

Information Systems

During FY08, Information Systems provided maintenance and technical support to the MFC's network of computers. Improvements and updates to the MFC's Web site were made throughout the year. The Web site is accessible by the public and employees: www.mfc.state.ms.us. During periods of high fire danger, the Web site is used to provide public service information, including daily fire reports and news releases. The "Intranet" section of the Web site has become very useful in providing updated forms and documents to employees. The Web site is managed as a joint project between Information Systems and Information/Outreach.

Human Resources

The MFC's Human Resources Department strives to maintain a total personnel administration program for the entire agency. In FY08, the MFC had 585 full-time and 54 part-time authorized employee positions.

Safety & Training

MFC EMPLOYEES

Position	FY07	FY08	FY09
Full-Time	585	585	504
Part-Time	54	54	29
TOTAL	639	639	533



MFC Web site Homepage

Safety & Training

The Safety and Training Program stresses the importance of safety in all programs of the MFC. Providing tools, techniques and training necessary for employees to work safely and effectively is essential to enhancing job skills and fostering personal development and growth. Continuing education and training opportunities were available for each employee in FY08.



Firefighter Training

FY08 MISSISSIPPI FORESTRY COMMISSION - REVENUE

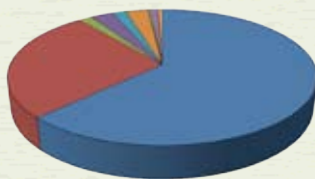
INCOME	6/30/2008	6/30/2007	Increase (Decrease)
48000 General Funds	\$19,600,216.00	\$18,140,319.01	\$1,459,896.99
40260 Severance Tax	2,742,639.21	2,760,793.13	(18,153.92)
40440 Acreage Tax	1,371,055.72	1,347,849.22	23,206.50
41460 Miscellaneous Income	160,376.73	4,393.72	155,983.01
42310 Criminal Law Assessment Fines	2,100.00	-	2,100.00
43010 Hardwood Seedling Sales	2,973.00	5,167.00	(2,194.00)
43011 Pine Seedling Sales	534,157.14	658,089.50	(123,932.36)
43100 Rent of State Property	74,852.63	56,496.00	18,356.63
44080 Forestry Programs	8,333,612.50	13,502,441.98	(5,168,829.48)
44500 Donations	(2,000.00)	(1,000.00)	(1,000.00)
44630 Red Sub Grants Rec	20,445.46	205,568.99	(185,123.53)
45010 Crew Assistance - Private Lands	599,487.25	593,485.21	6,002.04
45020 Crew Assistance - Public Lands	880,062.67	986,456.69	(106,394.02)
46000 Sale of Real Estate	-	3,000.00	(3,000.00)
46010 Sale of Personal Property	268,557.11	42,675.80	225,881.31
46020 Sale of Scrap	1,734.50	2,856.10	(1,121.60)
46030 Other Sales	5,285.10	107,993.69	(102,708.59)
49150 Transfer from Other Funds (MDOT)	197,651.41	-	197,651.41
49305 5 Year Cancelled Warr. Returns	691.92	1,993.27	(1,301.35)
Net Revenue	\$34,793,898.35	\$38,418,579.31	(\$3,624,680.96)

ACCOUNTS RECEIVABLE

Billable Services	241,661.77	22,334.60
Federal Reimbursements	976,609.12	437,475.55
Net A/R	\$1,218,270.89	\$459,810.15

TOTAL REVENUE	\$36,012,169.24	\$38,878,389.46
----------------------	------------------------	------------------------

FY08 REVENUES



■ General Funds - 62%
■ Forestry Programs - 27%
■ Severance Tax - 2%
■ Crew Assistance-Private Lands - 3%
■ Pine Seedling Sales - 2%
■ Crew Assistance-Public Lands - 3%
■ Red Sub Grants - less than 1%
■ Other Sales - less than 1%
■ Rent of State Property - less than 1%
■ Sale of Personal Property - 1%
■ Hardwood Seedling Sales - less than 1%
■ Miscellaneous Income - less than 1%
■ Real Estate Sales - less than 1%
■ Scrap Sales - less than 1%
■ 5 Yr. Cancelled Warranty Returns - less than 1%

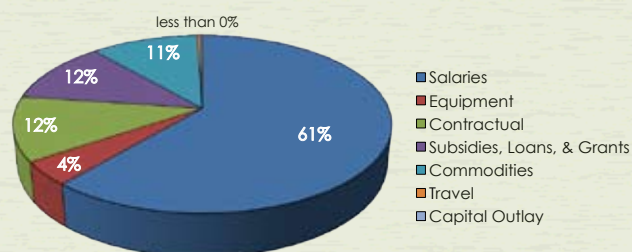
MFC FY08 FISCAL RECAP

Category	FY08 Authority	FY08 Expenses
Salaries	\$21,757,038	\$21,412,090
Travel	111,000	110,860
Contractual	4,837,639	4,070,763
Commodities	4,064,268	3,799,532
Bldgs & Improv	135,861	70,961
Equipment	1,697,433	1,512,486
Vehicles	690,895	614,381
Wireless Comm	2,000	890
SLG	4,600,000	3,985,763
TOTALS	\$37,896,134	\$35,577,726

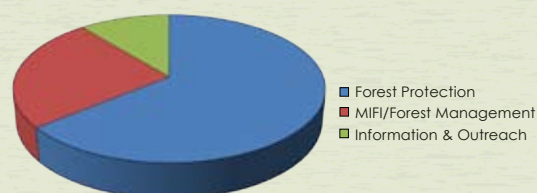
FY08 MISSISSIPPI FORESTRY COMMISSION - EXPENSE

EXPENSE		6/30/2008	6/30/2007	Increase (Decrease)
Salaries		\$21,412,089.99	\$19,371,456.17	\$2,040,633.82
Travel		110,860.49	112,607.07	(1,746.58)
Contractual		4,070,763.16	3,309,203.14	761,560.02
Software Acquisition	328,963.40			
Repair & Service	322,646.57			
Other Fees & Services	1,633,783.45			
Electricity	215,436.88			
Other Contractual Items	2,988,279.43			
Encumbrances		-	698,909.52	(698,909.52)
Commodities		3,799,532.03	2,526,918.04	1,272,613.99
Uniforms	291,445.47			
Fuels - Gasoline	697,420.11			
Fuels - Diesel	648,744.19			
Supplies & Materials	590,915.81			
Procurement Card	225,890.79			
Other Commodities	2,691,279.96			
Encumbrances		197.54	611,725.63	(611,528.09)
Capital Outlay other than equipment		70,961.00	26,644.00	44,317.00
Encumbrances		-	10,574.00	(10,574.00)
Equipment		1,512,485.70	6,070,166.08	(4,557,680.38)
Encumbrances		-	2,873,200.62	(2,873,200.62)
Vehicles		614,381.18	-	614,381.18
Encumbrances		-	-	-
Wireless Communication Devices		889.93	-	889.93
Encumbrances		-	-	-
Subsidies, Loans, and Grants		3,985,762.87	3,227,327.80	758,435.07
Encumbrances		-	-	-
TOTAL EXPENSE		\$35,577,923.89	\$38,838,732.07	(\$3,876,079.29)
NET		\$434,245.35	\$39,657.39	

FY08 EXPENSE



EXPENDITURES BY PROGRAM AREA



FY08 HIGHLIGHTS

Sixteenth Section Land

MFC has been collecting field data from the trees and forests growing on School Trust Lands to prepare the first comprehensive forest assessment, totaling approximately 480,000 acres. Information from the assessment, combined with applying more intensive timber management practices, will lead to increased timber sale revenues.

Technology Leader

The federal funding allocated to Mississippi for hurricane recovery efforts provided the financial support that significantly advanced the Forestry Commission's level of technology, at no cost to the state. Two unique products were created specifically for the Forestry Commission: a Geographical Information System (GIS) application called SIMSMap (Spatial Information Management System) and a computer-driven forest management plan developer called PlanWriter. The commission is also using a harvest scheduler called Woodstock, which takes data from SIMSMap and creates a statewide harvest plan that foresters will use when carrying out forest management activities from one year to the next.

Agency Reorganization

Beginning on July 1, 2008, the Forestry Commission implemented the new organizational structure, which includes creating two new management districts. The reorganization was accomplished using existing office space and without adding additional personnel. Benefits of the reorganization include:

- Forest management programs are administered from the district level instead of the administrative level, placing programs closer to the customer (landowner);
- Forest management and firefighting equipment are better aligned with areas of high fire occurrence and heavy forestry workload;
- One administrative layer has been removed from the district level, resulting in more forester expertise available at the local level.

HURRICANE KATRINA RECOVERY UPDATE

When Hurricane Katrina ravaged Mississippi's southernmost counties in 2005, the federal government appropriated \$11.8 million in supplemental funding to MFC to aid in recovery of lost forest resources. Beginning in FY06 and continuing through FY08, recovery projects funded through this program included:

- Enhancing wildfire protection and mitigation projects;
- Providing urban and community recovery grants.
- Conducting reinventory of Sixteenth Section forestlands damaged by Katrina;
- Providing Volunteer Fire Assistance grants and local Community Wildfire Prevention Plans;
- Keeping the public informed of forest health issues.



FY08 BOARD OF COMMISSIONERS

Robert E. "Bob" Cox, Chairman
1732 Douglastown Road
Maben, MS 39750
Fax Number: (662) 324-3183
Home Phone: (662) 324-0194
Cell Phone: (901) 488-3795
Email: robertecox@bellsouth.net
*Term Expires: June 30, 2008

Al Alexander, Vice-Chairman
Desoto Logging, Inc.
P.O. Box 460
Wiggins, MS 39577
Office Phone: (601) 928-4133
Fax Number: (601) 928-5091
Email: desotoland@datasync.com
*Term Expires: June 30, 2009

James Cummins, MIFI Board Member
P.O. Box 10
Stoneville, MS 38776
Office Phone: (662) 686-3375
Fax Number: (662) 666-4780
Home Phone: (662) 686-4592
Cell Phone: (662) 820-5703
Email: jcummins@wildlifemiss.org
*Term Expires: non-expiring

Danny Dilworth
275 County Road 514
Rienzi, MS 38865
Home Phone: (662) 287-3623
*Term Expires: June 30, 2013

Charles Donald, Jr.
Charles Donald Pulpwood, Inc.
P.O. Drawer 398
Port Gibson, MS 39150
Office Phone: (601) 473-4012
Fax Number: (601) 473-5562
Cell Phone: (601) 668-8027
Email: charlie@donalddtimber.com
*Term Expires: June 30, 2013

Larry Homan
P.O. Box 39
Fulton, MS 38843
Office Phone: (662) 862-2125
Fax Number: (662) 862-4900
Home Phone: (662) 862-2208
Cell Phone: (662) 891-2208
Email: tristate@intop.net
*Term Expires: June 30, 2012

Dr. George Hopper
Mississippi State University
P.O. Box 9680
Mississippi State, MS 39762
Office Phone: (662) 325-2953
Fax Number: (662) 325-0015
Email: ghopper@cfr.msstate.edu
*Term Expires: non-expiring

Glenn Sowell
210 Huntview
Brandon, MS 39042
Office Phone: (601) 683-2018
Home Phone: (601) 825-5027
Email: glen.sowell@farmcreditbank.com
*Term Expires: June 30, 2012

Richard Thoms
105 N. Lane Street
Newton, MS 39345
Office Phone: (601) 683-2572
Fax Number: (601) 683-2573
Home Phone: (601) 683-3126
Cell Phone: (601) 209-6830
Email: rthoms@rttlc.com
*Term Expires: June 30, 2011

Art Waymire
6181 Hernando Road
Byhalia, MS 38611
Home Phone: (662) 838-8289
Cell Phone: (901) 488-3290
Email: foxden14@aol.com
*Term Expires: June 30, 2010

*Members, by statute, may serve after their term expires until replaced.

MFC ADMINISTRATIVE DISTRICT OFFICES

Mississippi Forestry Commission
Charlie Morgan, State Forester
301 North Lamar Street, Suite 300
Jackson, Mississippi 39201
Phone: (601) 359-1386 • Fax: (601) 359-1349

Northeast District

Brendix Glasgow, District Forester
1711 McCullough Boulevard
P.O. Box 703 • Tupelo, MS 38802
Phone: (662) 842-5312 • Fax: (662) 680-9999

Northwest District

Brant Godbold, District Forester
1801 Highway 51 South • Grenada, MS 38901
Phone: (662) 226-3321 • Fax: (662) 226-0170

Capital District

Richard McInnis, District Forester
3139 Highway 468 • Pearl, MS 39208
Phone: (601) 420-6018 • Fax: (601) 420-6027

East Central District

Bruce Frasier, District Forester
14941 Highway 16 West
P.O. Box 429 • Philadelphia, MS 39350
Phone: (601) 656-1381 • Fax: (601) 656-9247

South Central District

Jack White, District Forester
2705 Highway 15 South
P.O. Box 348 • Bay Springs, MS 39422
Phone: (601) 764-2711 • Alt. Phone: (601) 764-3061
Fax: (601) 764-3037

Southeast District

Mark Hamilton, District Forester
1528 Azalea Drive
P.O. Box 430 • Wiggins, MS 39577
Phone: (601) 928-5261 • Fax: (601) 928-3174

Southwest District

Randy Chapin, District Forester
515 County Farm Lane Northeast
P.O. Box 749 • Brookhaven, MS 39602-0749
Phone: (601) 833-6621 • Alt. Phone: (601) 833-2598
Fax: (601) 835-0188

For a complete list of all offices & employees, please
visit our Web site at www.mfc.state.ms.us.

