

MISSISSIPPI FORESTRY COMMISSION



A YEAR OF PRODUCTIVITY

ANNUAL REPORT

{ The mission of the Mississippi Forestry Commission is to provide active leadership in forest protection, forest management, forest inventory and effective forest information distribution necessary for Mississippi's sustainable forest-based economy. }





THE MISSISSIPPI FORESTRY COMMISSION
HAS PROVIDED FOREST PROTECTION AND
FOREST MANAGEMENT TO MISSISSIPPI
LANDOWNERS SINCE 1926.

Message From the State Forester	1	2	Introduction & District Map
MFC's Organizational Chart	3	4	MS Institute for Forestry Inventory / Management
Private Lands	4	5	Forest Legacy / Assessment of Need
Forest Resource Development	5	5	Forest Stewardship Program
Public Lands	6	6	Sixteenth Section Lands
Forest Health	7	8	Fire Services
Communications	8	9	Aviation
Federal Excess Personal Property Program	9	9	Volunteer Fire Assistance Program
Fire Law Enforcement	10	11	Information & Public Outreach
Underserved Outreach Program	11	12	Urban & Community Forestry Program
Champion Tree Program	12	13	Business Support
Financial Services	13	13	Information Systems
Human Resources	13	13	Safety & Training
Revenue Report	14	15	Expense Report
Board of Commissioners	16		

Contact information for the district offices is located on the inside back cover.

*The Mississippi Forestry Commission provides equal employment opportunity and services to all individuals regardless of disability, race, age, religion, color, gender, creed, national origin or political affiliation.
This institution is an equal opportunity provider.*

2009 - A YEAR OF PRODUCTIVITY



Charlie Morgan
State Forester

The Mississippi Forestry Commission is responsible for taking care of the trees and forests of Mississippi, and we take this job seriously. For more than 83 years our Forestry Commission has provided the cutting-edge expertise and experience necessary to keep our state's forestland healthy, productive and profitable.

This has been a year of productivity for the Mississippi Forestry Commission (MFC), and our record speaks for itself as presented throughout this report. Our state's productive forests continue to serve as an important source of revenue, employment and outdoor recreation for Mississippians. The Forestry Commission plays a significant role in providing outstanding forest management assistance and wildfire protection to the state's landowners.

The MFC is responsible for managing the forestland on approximately 480,000 acres of valuable non-federal public lands in Mississippi. The majority of these lands are comprised of School Trust Lands set aside for the benefit and support of local public schools. Our goal is to maximize timber sale revenue on a sustainable basis in order to keep this legacy secure for future generations.

Some of the highlights of 2009 include:

- Developed 100 Sixteenth Section Forest Management Plans for 100 public school districts with forested School Trust Lands;
- Prepared 247 public land timber sales resulting in \$16 million of revenue for local school districts;
- Completed firebreak, woods road and boundary line maintenance on 1,147 miles of public lands;
- Carried out an aggressive prescribed burning program on private and public lands resulting in 32,385 acres treated;
- Continued providing outstanding support to the state's network of volunteer fire departments;
- Intensified the delivery of forest health assistance on private and public lands; and
- Began development of Mississippi's Forest Assessment and Resource Strategy Report (as directed by the 2008 Farm Bill). This report will identify and address the threats, trends and conditions facing our state's forests and associated natural resources. The report will be completed in 2010.

We appreciate our partners who provide support and collaboration on many of our programs and services. Developing strong relationships with natural resource agencies, organizations and individuals is vital to ensuring the citizens of Mississippi receive the best assistance and service possible.

I thank our state leaders, commission, staff, partners and citizens for their continued support and assistance in making 2009 a productive year.

Please feel free to contact our office at any time. We look forward to serving you.

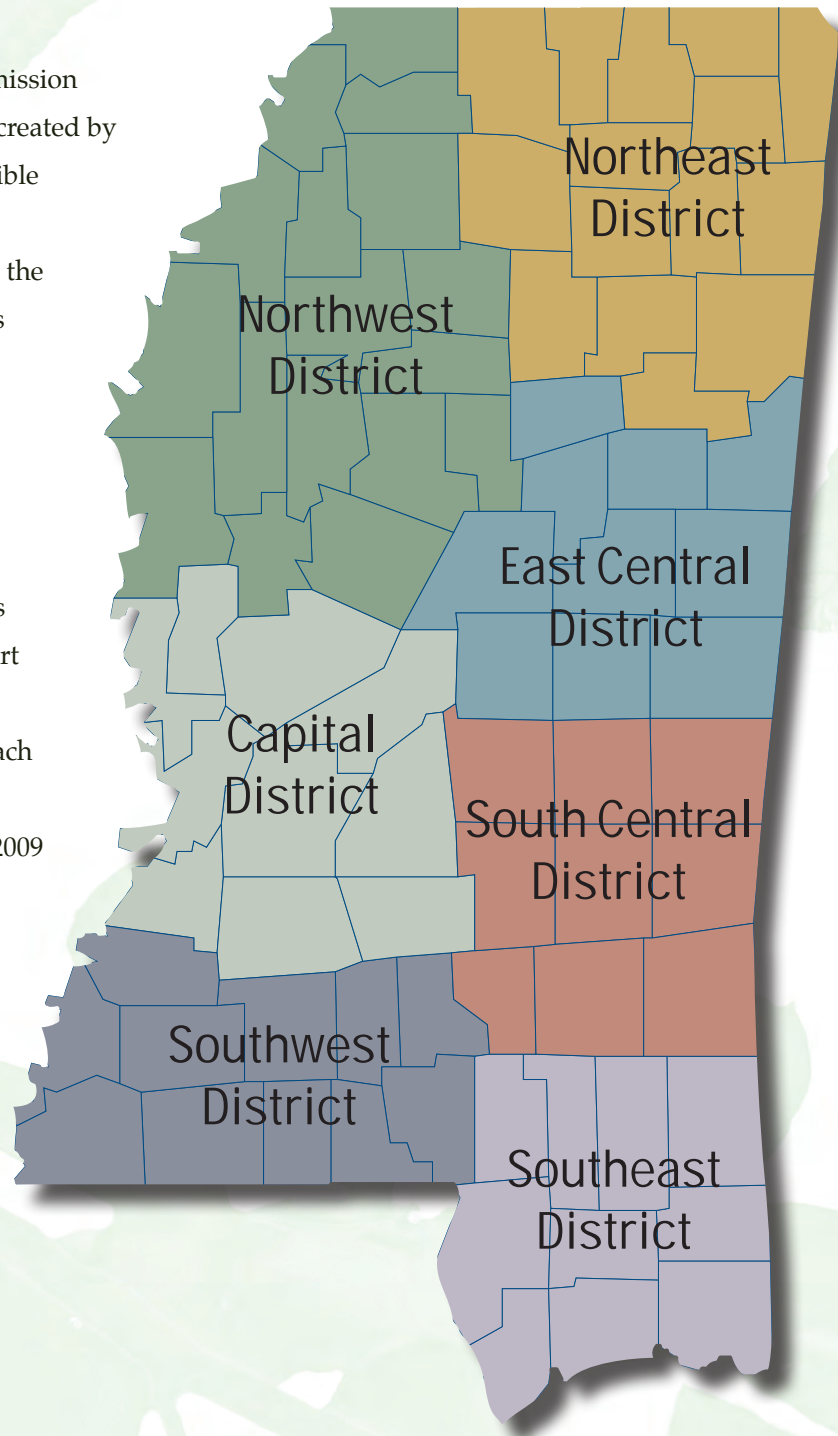
A handwritten signature in cursive script that reads "Charlie Morgan".

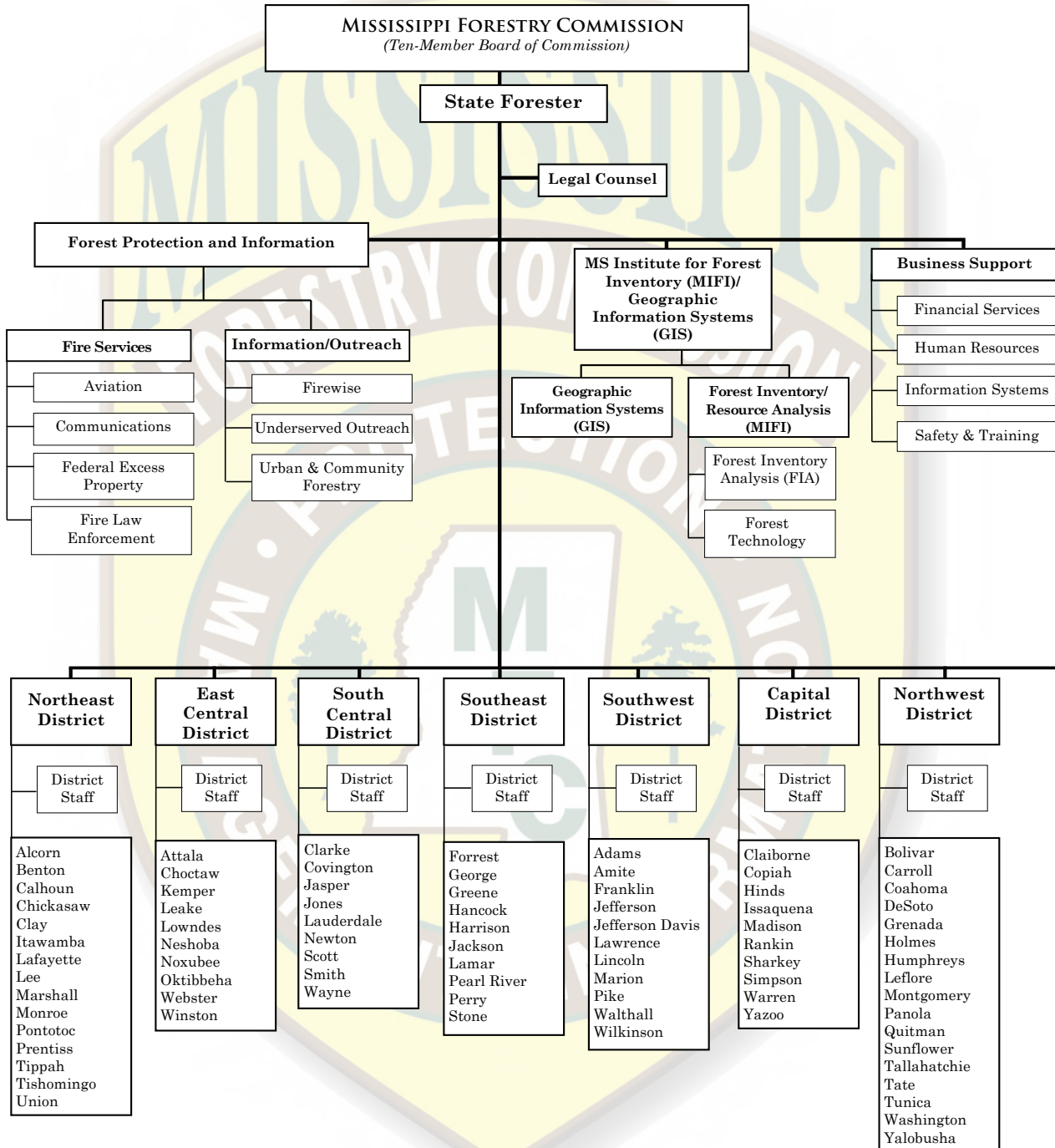
Charlie Morgan
State Forester



MISSISSIPPI FORESTRY COMMISSION ADMINISTRATIVE DISTRICTS

The Mississippi Forestry Commission (MFC) is a public service agency created by the State Legislature and responsible for all facets of forest protection, management and information for the state of Mississippi. The agency is divided into two major program areas: Forest Protection and Information, and the Mississippi Institute for Forest Inventory / Forest Management. These areas and seven administrative districts are supported by Business Support and Legal Counsel. This annual report provides an overview of each program area and highlights our accomplishments for Fiscal Year 2009 (July 1, 2008 to June 30, 2009).





MS INSTITUTE FOR FOREST INVENTORY

The Mississippi Institute for Forest Inventory/Forest Management provides direction and support to several program areas carried out on private and public lands.

In 2006, the Mississippi Legislature passed a law that brought the Mississippi Institute of Forest Inventory (MIFI) under the oversight of the MFC. Both MIFI and MFC's Forest Management Division dealt with forest inventory. By consolidating these activities, the agency eliminated duplication of work in particular areas and also allowed each department to capitalize on the other's strengths to form a stronger organization.

MFC's Resource Analysis program oversees the development, implementation and management of the agency's geographic information system. This is a statewide system that is utilized for information on fires, public/private lands and urban/community forestry programs.

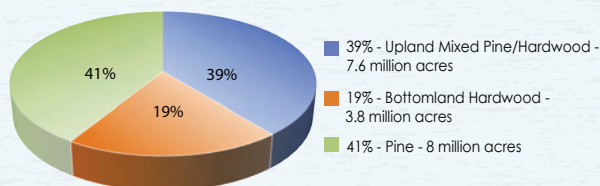
In an effort to promote economic development of the state's forest resources, MIFI, in conjunction with the Mississippi Development Authority (MDA), provides forest resource information and maps for economic development. A statewide assessment of forest resources is maintained utilizing satellite imagery to estimate forest removals, regeneration and developmental stages of forest cover.

In FY09, MIFI completed a baseline forest inventory for Mississippi. In addition, MIFI responded to numerous requests for resource analyses for ethanol conversion and wood pellet facilities.

FOREST MANAGEMENT

The MFC is charged in Mississippi Code Section 49-19-3 to "promote sound forest management practices which maintain the integrity of the environment and provide for our state's future natural resource needs." The MFC offers a variety of forest management services to private landowners and public forestlands of Mississippi, such as 16th Section Lands and other state agency properties.

MISSISSIPPI FOREST TYPES*



*Source: Mississippi's Forests, 2006. USDA, Southern Research Station, Bulletin SRS-147. Chart does not include 0.2 million acres of exotic hardwood and non-stocked timberland.

PRIVATE LANDS

MFC provides technical and financial assistance to private nonindustrial forest landowners (PNIFs) in Mississippi. Seventy-eight percent of Mississippi's timberland, 15.2 million acres, belongs to an estimated 350,000 PNIFs with parcels of 10 acres or greater. MFC provides technical financial assistance to PNIFs through programs designed to enhance and protect natural resources.

FY09 STATEWIDE ACCOMPLISHMENTS

Private Lands Activities

Landowners Assisted	13,802
Forest Management Plans	1,663
Acres	76,271

Public Land Activities

Timber Sale Receipts	\$16,676,827*
Number of Sales	247
Acres Regenerated	5,297
Forest Management Plans	100
Boundary Line Maintenance (Miles)	526
Firebreak/Woods Road Maintenance (Miles)	621

Forest Resource Development Program

Acres Regenerated or Improved	20,529
-------------------------------	--------

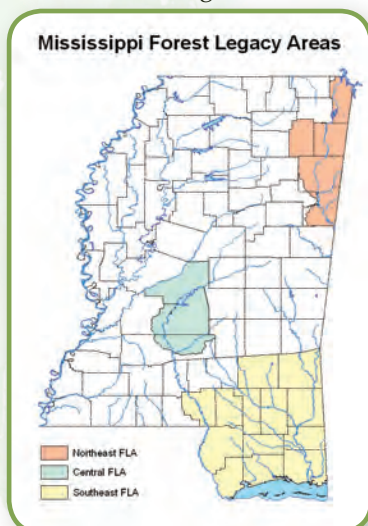
Prescribed Burning

Private Lands (Acres)	13,990
Public Lands (Acres)	18,395
Total	32,385

*Source: MFC's Public Lands Timber Sale report and FY09 Crew Assistance report. Receipts are from sales made on School Trust Lands and other public lands. Timber sale receipts consist of lump sum sale revenue, carry-over revenue from FY08, and actual thin sale revenue; does not include remaining pay-as-cut revenue estimated to be \$2.7 million, which will be reported next year as carry over from FY09. Note: 26 public land timber sales were rejected in FY09 due to low bids, which reflects poor market conditions, especially in the sawtimber market.

FOREST LEGACY PROGRAM

The Forest Legacy Program (FLP) was authorized by the 1990 Food, Agriculture, Conservation and Trade Act



to identify and protect environmentally important, private forestlands threatened with conversion to non-forest uses. FLP is a USDA Forest Service program in partnership with Mississippi that will help support local efforts to protect environmentally sensitive, privately owned forestlands threatened by

conversion to non-forest use through land acquisition and conservation easements.

ASSESSMENT OF NEED (AON)

In 2009, MFC continued implementing the 2007-2011 Assessment of Need (AON). The AON is a statewide plan for implementing the Forest Legacy Program that identifies areas where important natural forest communities exist on private lands that are potentially threatened by conversion from urban and suburban growth or other threats. The Assessment of Need recommends these areas of the state be designated as Forest Legacy Areas, so that willing landowners may nominate their property as a possible Forest Legacy Tract. The MFC administers the FLP with funding from the USDA Forest Service. The AON is posted on the MFC's Web site at www.mfc.state.ms.us.



FOREST RESOURCE DEVELOPMENT

The Forest Resource Development Program (FRDP) was established in 1974 by the Mississippi Legislature for developing the state's forest economy. This program provides cost-share funding for tree planting and forest improvement practices for the purpose of long-term timber production. This program helps offset a landowner's expense by sharing the cost of implementing specific forestry practices designed to produce timber and enhance wildlife development. Cost-share payments cover 50 to 75 percent (depending on the practice) of the total cost of implementing one or more forestry practices, with a maximum limit set for each individual practice. Eligible landowners can receive up to \$7,000 of FRDP assistance a year. In turn, a landowner agrees to protect the area receiving FRDP assistance from fire and grazing, and to properly manage the area for a minimum of ten years.

On average, more than \$2 million is distributed each year to private forest landowners in Mississippi through the Forest Resource Development Program, which provides cost sharing for tree planting and forest improvements.

FOREST STEWARDSHIP PROGRAM

The Forest Stewardship Program promotes natural resource planning on private, nonindustrial forestlands. Landowners not currently under forest management are encouraged to utilize stewardship management through the development and implementation of a Forest Stewardship Management Plan. These plans are based on sound management principles designed to restore and protect forest resources and water quality and to improve fish and wildlife habitats.

The Forest Stewardship Program is funded by the USDA Forest Service. The program is carried out by MFC through its Forest Stewardship Committee. Technical assistance is provided by local, federal, state and private natural resource agencies and organizations. The State Plan for the Mississippi Forest Stewardship Program provides the framework for conducting the program. The plan also contains stewardship background, guidelines and forms for landowners and resource professionals.



MANAGING PUBLIC LANDS

The MFC provides management assistance to boards, agencies and other entities having jurisdiction over approximately 480,000 acres of non-federal public forestlands in Mississippi. MFC is responsible for managing two state forests, Kurtz and Camden; managing School Trust Lands; and rendering assistance to the various agencies, boards, departments and other entities having jurisdiction over state and other public lands in Mississippi.

The Mississippi Forestry Commission is a nationally recognized leader in forest management technology. Several unique software products have been created specifically for forestry management through hurricane recovery federal funding and at no cost to the state:

- A Geographical Information System (GIS) application called Spatial Information Management System (SIMSMap);
- A computer-driven forest management plan developer called PlanWriter; and
- A harvest scheduler called Woodstock, which takes data from SIMSMap and creates a statewide harvest plan to carry out management activities from one year to the next.



In FY09, the revenue from timber sales on non-federal public lands, including School Trust Lands, totaled \$16.7 million.

"Our goal is to maximize School Trust Land timber sale revenue by applying a more intensive timber management process. The potential to increase revenue on a sustainable basis exists, and we intend to make it happen for the local school districts and the children attending those schools."

Charlie Morgan, State Forester



Sixteenth Section Lands

The Forestry Commission is charged by state law to manage forested School Trust Lands, commonly referred to as Sixteenth Section Lands located in 67 counties. In addition to timber production, management considerations also include wildlife, soil and water quality, aesthetics and other appropriate benefits of forestlands. The revenue from timber sales on School Trust Lands and other public lands in FY09 totaled \$16.7 million.

The MFC has converted all its management data into a GIS system to prepare the first comprehensive Sixteenth Section Land Assessment. This assessment, together with more intensive forest management practices and favorable markets, could raise timber-generated revenues to \$30 million per year or more.

Anticipating future needs, the MFC ensures necessary steps are taken so that all School Trust Lands are managed sustainably, and best management practices are used on all lands. FY09 highlights include presenting 100 customized 16th Section Forest Management Plans to 100 school districts with School Trust Funds.

FOREST HEALTH

MFC provides forest pest detection, evaluation and control recommendations for all private and state-owned timberlands as well as urban areas. The agency conducts at least one statewide aerial survey each year and additional surveys when needed. Insect and disease spots are ground checked to determine the exact cause and extent of damage.

Timber damage from forest insects and disease has been very light for FY09 compared to previous years. However, the southern pine beetle kills more pine timber in the South than any other forest insect. As a result, the MFC has partnered with the MSU Extension Service to carry out a Southern Pine Beetle Landowner Incentive Program designed to provide a financial incentive to landowners who apply southern pine beetle management practices.

The second leading insect to kill pine timber in the South is the *Ips* engraver beetle. Drought conditions and stress from severe winds can cause the *Ips* engraver beetle populations to increase dramatically.

In FY08, the MFC launched a plan to mitigate the damage caused by invasive non-native plant species to the state's forestland. The Exotic Invasive Species Plan addresses the detection, identification, information, control and abatement of six species of concern that are either impacting or have the greatest potential to impact the forest resource of Mississippi. These species are cogongrass (*Imperata cylindrica*); kudzu (*Pueraria montana*); Chinese tallowtree (*Sapium sebifera*); Chinese/European privet (*Ligustrum sinense*); Japanese/glossy privet (*Ligustrum japonicum*); and Japanese climbing fern (*Lygodium japonicum*). The plan also addresses the need to develop partnerships with other agencies and organizations to achieve common goals in regard to invasive species.



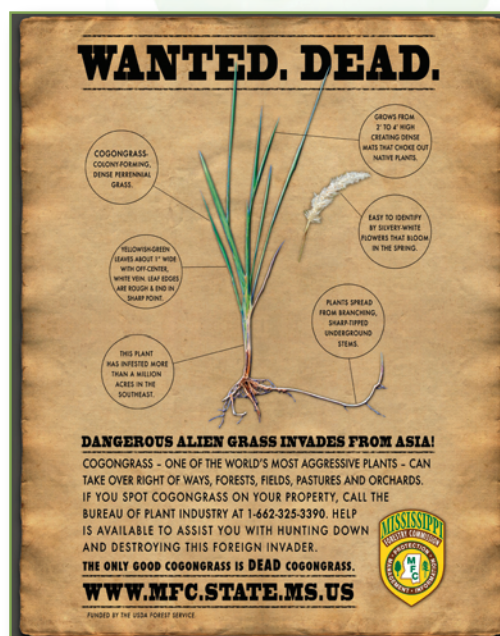
Southern Pine Beetle Trap



Southern Pine Beetle

This year, the MFC and Mississippi State University received American Recovery and Reinvestment Act (ARRA) grants. These grants will provide Mississippi landowners with financial and technical assistance for combating invasive plants, particularly cogongrass (MFC); reducing the number of wildfires by removing fuel buildup through hazard mitigation (MFC); and treating pine timber stands to mitigate the high risk of infestations by the southern pine beetle (MSU).

Native to Southeast Asia, cogongrass is believed to have entered the US in the early 1900s as packing material. Today, infested areas of cogongrass are found on more than one million acres throughout the southeastern US. In Mississippi, cogongrass has been identified in 62 counties, with significant infestations in 28 counties. The ARRA grant will assist MFC with public education and cogongrass control measures in select counties.



Cogongrass Education Poster



Cogongrass Spring Blooms (*Imperata cylindrica*)

FIRE SERVICES

The Fire Services Division includes four departments: Aviation, Communications, Federal Excess Personal Property Program and Fire Law Enforcement.

In 1926, the Mississippi Legislature mandated that the MFC protect the state's forestland from wildfire. At that time, wildfires were consuming more than five million acres of timberland each year.

MFC provides assistance to Mississippi and other states with all weather-related events such as hurricanes, ice storms and large scale wildfires, and also coordinates the management of MFC's firefighting resources within the state.

MFC collects all data needed to make sound decisions and long-range plans to ensure the adequate allocation of resources needed for pre-suppression and suppression of wildfires. MFC manages 13 remote area weather stations (RAWS) strategically located across the state as part of a national grid. These weather stations provide localized forestry and fire-related weather forecasts.

The MFC provides the following weather and fire information on the Web site:

- Fire Danger Rating (USDA Forest Service Wildland Fire Assessment System)
- Current Weather
- Forecast
- Fire Danger Rating and Color Code
- Keach Bryam Drought Index
- MFC Daily Fire Situation Report
- Southern Area Coordination Center (SACC)
- National Weather Service Enhanced Radar Image Loop for the United States
- NWS Enhanced Radar Image Loop for Lower Mississippi Valley Sector
- NWS Fire Weather Report



Remote Area Weather Station (RAWS)

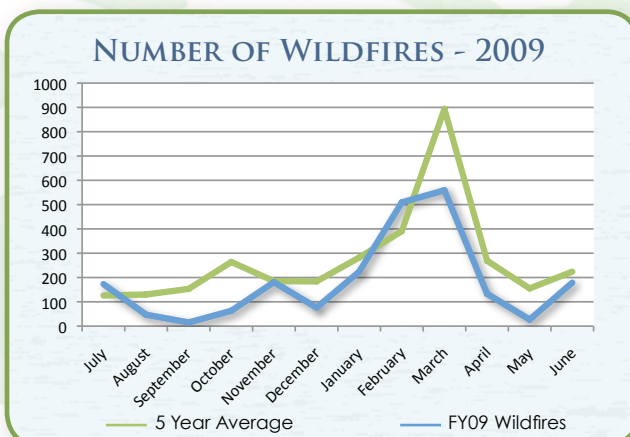
While great strides in wildfire prevention, detection and suppression have been made, wildfires still continue to plague the state. There are approximately 3,200 wildfires each year in Mississippi burning more than 55,000 acres.

In an effort to reduce the number of carelessness-caused wildfires, burn bans are authorized by County Boards of Supervisors and approved by the MFC. Burn ban notifications are listed on the MFC's Web site at www.mfc.state.ms.us.

Communications

An essential element of the agency's ability to deploy firefighting resources and maintain situational awareness of wildfire activity is dependable radio communications. The Communications Department is responsible for the maintenance and upgrades to the MFC's communication network which spans across the state. Components of the network include mobile radios in the agency's fleet of vehicles, lightweight hand-held radios for field personnel, and the communication network of radio repeater sites, which provide statewide communication from dispatch centers to field personnel.

In FY07, MFC deployed an innovative and state-of-the-art "Radio Over Internet Protocol" (radio/IP) communication system, which converts radio signals into a digital format and is transmitted in real time through the existing MFC computer network. This communication system is also capable of connecting to approved state government emergency communication networks.



In FY09, MFC suppressed 2,186 wildfires, which burned 28,823 acres. The average wildfire size for FY09 was 13.2 acres.

Aviation

Wildfire detection is provided by airplane surveillance together with the public's reporting of wildfires using toll-free numbers provided by the MFC. Fire suppression crews are dispatched from a central dispatching center located at a district office. MFC's Aviation Department also provides service and support to Forest Health and other forest management programs.

Federal Excess Personal Property Program

Providing assistance to the state's volunteer fire departments has had a significant impact on reducing the number of wildfires in Mississippi. This assistance is available through the Federal Excess Personal Property (FEPP) Program, administered by the MFC through an agreement with the USDA Forest Service.

Since 1956, FEPP has allowed the Forest Service to loan property to state forestry agencies for the purpose of wildland and rural firefighting. The Forest Service is authorized and encouraged by the Secretary of Agriculture to loan FEPP to states, and through the states, to local fire forces. Approximately 70 percent of the property involved in the FEPP program in Mississippi is sub-loaned to local fire departments. In FY09, MFC's FEPP issued 129 vehicles with an estimated value or acquisition cost of \$4.1 million.

In FY09, the Mississippi Forestry Commission awarded 73 grants totaling \$226,427 to volunteer fire departments.



Volunteer Fire Assistance Program

Formerly known as the Rural Community Fire Protection Program, the Volunteer Fire Assistance Program (VFA) provides grants to eligible rural volunteer fire departments (VFDs) for the purchase of firefighting and personal protection equipment. The Mississippi Forestry Commission administers this program through an agreement with the national Forest Service. In FY09, the Mississippi Forestry Commission awarded 73 grants totaling \$226,427 to volunteer fire departments. These grants were used to purchase wildland firefighting ready-kits containing protective clothing and gear for 730 volunteer firefighters.



FEPP Vehicle (before)



FEPP Vehicle (after)

FIRE LAW ENFORCEMENT

The MFC and the Mississippi judicial system have the responsibility to pursue the arrest and conviction of woods arsonists, individuals who show little or no concern for Mississippi's citizens and forest resource. They are also charged with pursuing retribution in instances where negligence has caused wildfires that result in the expenditure of state and/or federal funds.

Woods arson has historically been the leading cause of wildfires in Mississippi. In 1993, in an attempt to abate the problem, the Mississippi Legislature established fire law enforcement positions within MFC. The duties and authority of these officers are limited to woods arson. These officers may "... issue citations for any violation of those laws designed for the protection from fire recklessly or with gross negligence being communicated on the lands of another." (Section 49-19-3)

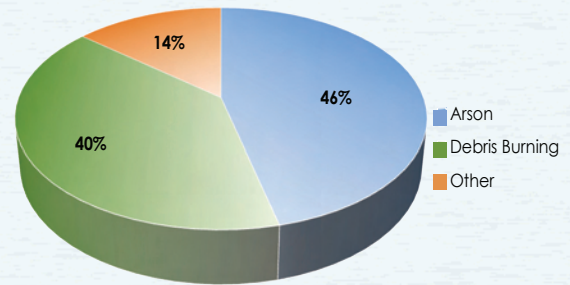
In FY09, MFC investigated approximately 225 arson cases (criminal and civil) and issued misdemeanor woods arson citations.

Accidental fires, such as escaped control burns and debris burns, are as costly as those set on purpose. Accidental fires, the second most common cause of wildfires in Mississippi, require the same types of actions and resources as arson fires.

FY09 WILDFIRES BY CAUSE

Cause	# Wildfires	Acres Burned
Incendiary (arson)	1,010	16,504
Debris Burning	872	8,292
Miscellaneous	159	2,316
Re-ignition	62	713
Equipment Use	31	297
Lightning	18	419
Smoking	10	88
Railroad	7	69
Children	10	101
Campfire	7	24
TOTAL	2,186	28,823

FY09 WILDFIRES BY CAUSE



Wildfire Origin and Cause Training



Setting Backfire on a Prescribed Burn



(left to right) State Forester Charlie Morgan, Smokey Bear, and MS National Forest Supervisor Gretta Boley

FOREST INFORMATION AND PUBLIC OUTREACH

The Information/Outreach Division has three departments: Forest Information, Public Outreach/Conservation, and Urban/Community Forestry.

The Forest Information and Public Outreach Division supports all MFC program areas by providing information, promotional activities and publicity. The division utilizes mass media outlets (e.g., radio, television and print) to release forestry and agency information to the public at large. Multiple delivery methods are used in order to reach the public in the most effective manner.

Forest Information

The Forest Information Department provides support to all MFC programs through the development of displays, exhibits, brochures and other informational material. The department is responsible for maintaining the MFC Web site www.mfc.state.ms.us and producing the agency's newsletter, *MFC News*.

MFC OUTREACH PROGRAM

Newsprint	366
Adult & Youth Programs	761
Participants	168,696

Public Outreach/Conservation Education

The Public Outreach/Conservation Education Department maintains an active outreach program designed to educate youths and adults about forestry and related issues, in addition to the agency's mission and services. Local outreach activities such as civic club presentations, forestry field days and visits to school groups are carried out across the state to reach individuals at the community level. In FY09, outreach activities reached more than 34,000 youths and 133,000 adults. Two outreach programs are housed within the Public Outreach/Conservation Education Department: the Firewise Program and the Underserved Landowner Outreach Program. Firewise is an educational program for homeowners and community leaders. This program is for anyone living in, or connected to, the wildland/urban interface. Information is available on how to design, construct, landscape and maintain a home or community to withstand a wildfire without the aid of firefighting resources on scene.



The Underserved Landowner Outreach Program is a joint project between the MFC, Alcorn State University and the USDA Forest Service. The program offers assistance to underserved landowners in Mississippi. This program has three primary goals:

- To provide outreach support and technical assistance to underserved landowners;
- To encourage young people to seek careers in forestry; and
- To work with Alcorn State University to develop and/or enhance projects of mutual forestry interest.

Urban/Community Forestry

The MFC provides assistance and training to urban areas in developing community forestry programs. This includes support to counties and municipalities on developing tree ordinances, inventorying street trees and writing urban forest management plans. The MFC also provides technical advice to builders on tree preservation during construction and helps homeowners with advice on insects, diseases and other tree care problems.

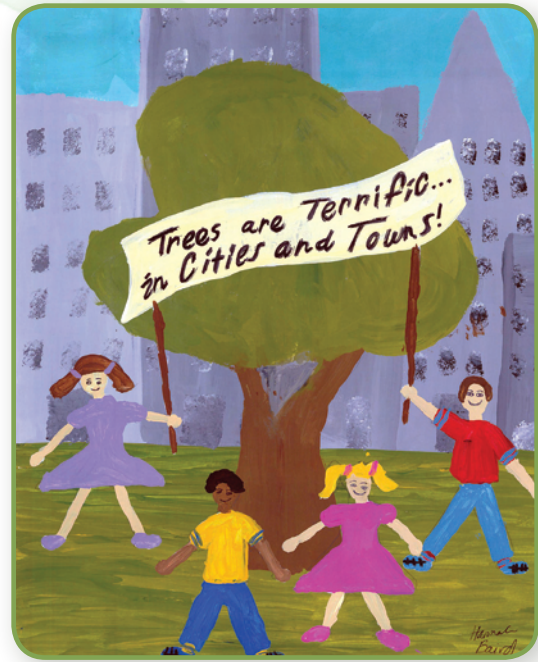
In FY09, the MFC's Urban/Community Forestry Program provided 23 financial assistance grants totaling \$348,931 to state and local governments, non-profit groups and educational institutions.

The Urban and Community Forestry Challenge Grant Program, funded through the USDA Forest Service, provides funding for administration, demonstration projects and educational programs.

The Transportation Enhancement Tree Planting Program provides matching grants to state and local governments for the purpose of planting trees to enhance transportation systems. Qualifying projects must be in close proximity to a public transportation corridor or facility. This program is administered by the MFC with financial support from the Mississippi Department of Transportation.

Providing leadership, financial aid and technical support to the Mississippi Urban Forest Council is a major function of the MFC's urban forestry effort. The agency worked jointly with this volunteer organization to conduct a statewide conference and carry out a statewide awards program.

The MFC responded to 1,876 requests from cities, communities and homeowners for urban forestry assistance during FY09.



2009 Arbor Day Poster Contest Winner

CHAMPION TREE PROGRAM

Champion Trees of Mississippi, the official publication of the Mississippi Champion Tree Program, records the largest trees of various species growing in the state. Of the 163 trees registered as Mississippi Champions, nine are also national champions and five are national co-champions.

TREE CITY USA AWARDS

Tree City USA is a national recognition program that provides a basis for a good community forestry program. The Tree City USA Program is administered in Mississippi by the MFC. In the calendar year of 2008, 30 cities were awarded Tree City USA status:

Biloxi	Horn Lake	Oxford
Cleveland	Keesler AFB	Pass Christian
Columbus	Laurel	Pearl
Columbus AFB	Leakesville	Ridgeland
Ellisville	Long Beach	Sandersville
Greenville	Lucedale	Senatobia
Greenwood	Meridian	Tunica
Grenada	Newton	Tupelo
Gulfport	Ocean Springs	Wiggins
Hattiesburg	Olive Branch	Winona

BUSINESS SUPPORT

Business Support consists of four service-oriented departments: Financial Services, Information Systems, Human Resources and Safety/Training.

Financial Services

Financial records of the MFC are maintained in accordance with accepted accounting procedures and conform to state and federal law as defined by the Comptroller, Examiners of Public Accounts and the USDA Forest Service. MFC FY09 Income and Expense Statement and financial highlights can be found on pages 14 & 15.

A component of Financial Services, the Purchasing Department is responsible for ensuring that the MFC follows all state purchasing laws and requirements. Providing purchasing-related assistance to the agency's administrative districts and program areas is an essential function of the department.

Information Systems

During FY09, Information Systems provided maintenance and technical support to the MFC's network of computers. Improvements and updates to the MFC's Web site were made throughout the year. The Web site is accessible by the public and employees at www.mfc.state.ms.us. During periods of high fire danger, the Web site is used to provide public service information, including daily fire reports and news releases. The "Intranet" section of the Web site has become very useful in providing updated forms and documents to employees. The Web site is managed as a joint project between Information Systems and Information/Outreach.

Human Resources

The MFC's Human Resources Department strives to maintain a total personnel administration program for the entire agency. In FY09, the MFC had 504 full-time and five part-time authorized employee positions. Authorized positions for FY10 include 490 full-time and six part-time.

MFC EMPLOYEES*

Position	FY09	FY10
Full-Time	504	490
Part-Time	5	6
TOTAL	509	496

* Does not include federally-funded, time-limited positions.



Firefighter Hand Tool Training

Safety & Training

The Safety and Training Program stresses the importance of safety in all programs of the MFC. Providing tools, techniques and training necessary for employees to work safely and effectively is essential to enhancing job skills and fostering personal development and growth. Continuing education and training opportunities were available for each employee in FY09.



Operation & Maintenance Training on New Transport Trucks Provided to MFC Operators

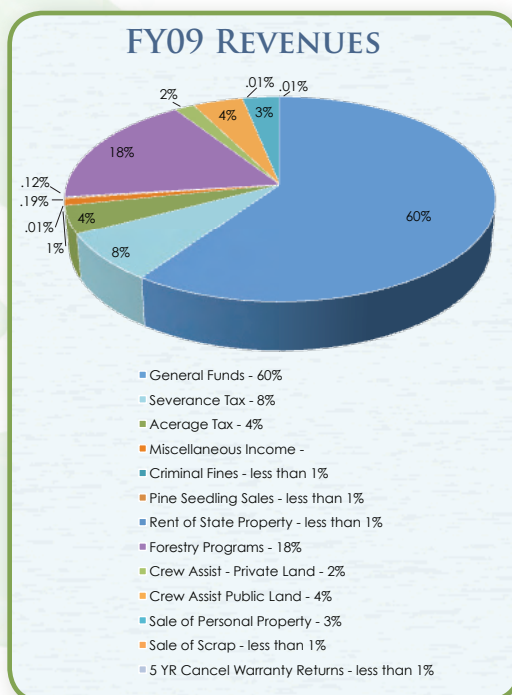
FY09 MISSISSIPPI FORESTRY COMMISSION - REVENUE

INCOME	6/30/2009	6/30/2008	Increase (Decrease)
48000 General Funds	\$18,648,649	\$19,600,216	(\$951,567)
40260 Severance Tax	2,412,904	2,742,639	(329,735)
40440 Acreage Tax	1,371,878	1,352,418	19,460
41460 Miscellaneous Income	327,759	165,628	162,130
42310 Criminal Law Assessment Fines	2,121	100	2,021
43011 Pine Seedling Sales	60,289	537,130	(476,841)
43100 Rent of State Property	35,953	73,893	(37,939)
44080 Forestry Programs	5,491,558	8,486,885	(2,995,327)
45010 Crew Assistance - Private Lands	542,644	600,290	(57,646)
45020 Crew Assistance - Public Lands	1,348,998	873,659	475,339
46010 Sale of Personal Property	1,009,715	268,557	741,158
46020 Sale of Scrap	3,669	1,696	1,973
49305 5 Year Cancelled Warr. Returns	702	692	10
Net Revenue	\$31,256,838	\$34,703,803	(\$3,446,964)

ACCOUNTS RECEIVABLE

Billable Services	155,812	241,662
Federal Reimbursements	452,136	976,609
Net A/R	\$607,948	\$1,218,271

TOTAL REVENUE	\$31,864,787	\$35,922,074
----------------------	---------------------	---------------------



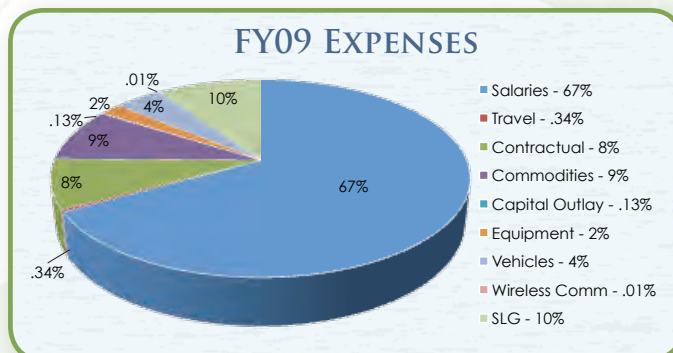
MFC FY09 FISCAL RECAP

Category	FY09 Authority	FY09 Expenses
Salaries	\$20,525,444	\$20,072,660
Travel	113,000	112,203
Contractual	3,316,224	2,984,650
Commodities	3,112,728	2,831,510
Capital Outlay	177,389	161,776
Equipment	665,000	613,785
Vehicles	2,028,270	1,825,396
Wireless Comm	1,000	940
SLG	2,925,580	3,050,719
TOTALS	\$32,864,635	\$31,653,640

FY09 MISSISSIPPI FORESTRY COMMISSION - EXPENSE

EXPENSE	6/30/2009	6/30/2008	Increase (Decrease)
Salaries	\$20,072,660	\$21,318,874	(\$1,246,214)
Travel	112,203	105,818	6,386
Contractual	2,668,764	3,889,826	(1,221,061)
Repair & Service-vehicles, bldg, etc.	246,155		
Electricity	182,684		
Capitol Facilities	122,472		
Other Fees & Services	680,033		
Other Contractual Items	1,437,420		
Encumbrances	315,886	407,615	(91,729)
Commodities	2,753,155	3,675,641	(922,486)
Uniforms	237,044		
Fuels - Gasoline	550,259		
Fuels - Diesel	417,633		
Repair Parts - other	433,436		
Procurement Card	229,488		
Other Commodities	885,294		
Encumbrances	78,355	300,291	(221,936)
Capital Outlay <i>other than equipment</i>	62,575	26,661	35,914
Encumbrances	99,201	52,365	46,836
Equipment	597,060	1,448,779	(851,719)
Encumbrances	16,725	63,850	(47,125)
Vehicles	1,740,573	614,381	1,126,191
Encumbrances	84,823	-	-
Wireless Communication Devices	890	890	-
Encumbrances	50	400	-
Subsidies, Loans, and Grants	3,050,719	3,740,272	(689,553)
Encumbrances	-	60,000	-
TOTAL EXPENSE	\$31,653,640	\$35,705,663	(\$4,076,496)
NET	\$211,147	\$216,411	

Total Encumbrances thru June 2009 (cash not expended, only authority reserved): \$595,041



International 7500 Transport Trucks

FY09 BOARD OF COMMISSIONERS

Robert E. "Bob" Cox, *Chairman*

1732 Douglastown Road

Maben, MS 39750

Fax Number: (662) 324-3183

Home Phone: (662) 324-0194

Cell Phone: (901) 488-3795

Email: robertecox@bellsouth.net

*Term Expires: June 30, 2008

Al Alexander, *Vice-Chairman*

Desoto Logging, Inc.

P.O. Box 460

Wiggins, MS 39577

Office Phone: (601) 928-4133

Fax Number: (601) 928-5091

Email: desotoland@datasync.com

*Term Expires: June 30, 2009

James Cummins, *MIFI Board Member*

P.O. Box 10

Stoneville, MS 38776

Office Phone: (662) 686-3375

Fax Number: (662) 666-4780

Home Phone: (662) 686-4592

Cell Phone: (662) 820-5703

Email: jcummins@wildlifemiss.org

*Term Expires: non-expiring

Danny Dilworth

275 County Road 514

Rienzi, MS 38865

Home Phone: (662) 287-3623

*Term Expires: June 30, 2013

Charles Donald, Jr.

Charles Donald Pulpwood, Inc.

P.O. Drawer 398

Port Gibson, MS 39150

Office Phone: (601) 473-4012

Fax Number: (601) 473-5562

Cell Phone: (601) 668-8027

Email: charlie@donalddtimber.com

*Term Expires: June 30, 2013

Larry Homan

P.O. Box 39

Fulton, MS 38843

Office Phone: (662) 862-2125

Fax Number: (662) 862-4900

Home Phone: (662) 862-2208

Cell Phone: (662) 891-2208

Email: tristate@intop.net

*Term Expires: June 30, 2012

Dr. George Hopper

Mississippi State University

P.O. Box 9680

Mississippi State, MS 39762

Office Phone: (662) 325-2953

Fax Number: (662) 325-0015

Email: ghopper@cfr.msstate.edu

*Term Expires: non-expiring

Glenn Sowell

210 Huntview

Brandon, MS 39042

Office Phone: (601) 683-2018

Home Phone: (601) 825-5027

Email: glen.sowell@farmcreditbank.com

*Term Expires: June 30, 2012

Richard Thoms

105 N. Lane Street

Newton, MS 39345

Office Phone: (601) 683-2572

Fax Number: (601) 683-2573

Home Phone: (601) 683-3126

Cell Phone: (601) 209-6830

Email: rthoms@rttlc.com

*Term Expires: June 30, 2011

Art Waymire

6181 Hernando Road

Byhalia, MS 38611

Home Phone: (662) 838-8289

Cell Phone: (901) 488-3290

Email: foxden14@aol.com

*Term Expires: June 30, 2010

*Members, by statute, may serve after their term expires until replaced.

MFC ADMINISTRATIVE DISTRICT OFFICES

Mississippi Forestry Commission

Charlie Morgan, State Forester

301 North Lamar Street, Suite 300

Jackson, Mississippi 39201

Phone: (601) 359-1386 • Fax: (601) 359-1349

Northeast District

Brendix Glasgow, District Forester

1711 McCullough Boulevard

P.O. Box 703 • Tupelo, MS 38802

Phone: (662) 842-5312 • Fax: (662) 680-9999

South Central District

Jack White, District Forester

2705 Highway 15 South

P.O. Box 348 • Bay Springs, MS 39422

Phone: (601) 764-2711 • Alt. Phone: (601) 764-3061

Fax: (601) 764-3037

Northwest District

Brant Godbold, District Forester

1801 Highway 51 South • Grenada, MS 38901

Phone: (662) 226-3321 • Fax: (662) 226-0170

Southeast District

Mark Hamilton, District Forester

1528 Azalea Drive

P.O. Box 430 • Wiggins, MS 39577

Phone: (601) 928-5261 • Fax: (601) 928-3174

Capital District

Richard McInnis, District Forester

3139 Highway 468 • Pearl, MS 39208

Phone: (601) 420-6018 • Fax: (601) 420-6027

East Central District

Bruce Frasier, District Forester

14941 Highway 16 West

P.O. Box 429 • Philadelphia, MS 39350

Phone: (601) 656-1381 • Fax: (601) 656-9247

Southwest District

Randy Chapin, District Forester

515 County Farm Lane Northeast

P.O. Box 749 • Brookhaven, MS 39602-0749

Phone: (601) 833-6621 • Alt. Phone: (601) 833-2598

Fax: (601) 835-0188

*For a complete list of all offices & employees, please
visit our Web site at www.mfc.state.ms.us.*





www.mfc.state.ms.us