



MISSISSIPPI FORESTRY COMMISSION

# 2010

## ANNUAL REPORT

A YEAR OF DEVELOPMENT

{ The mission of the Mississippi Forestry Commission is to provide active leadership in forest protection, forest management, forest inventory and effective forest information distribution necessary for Mississippi's sustainable forest-based economy. }





THE MISSISSIPPI FORESTRY COMMISSION  
HAS PROVIDED FOREST PROTECTION AND  
FOREST MANAGEMENT TO MISSISSIPPI  
LANDOWNERS SINCE 1926.

---

Message From the State Forester	1 2	Introduction & District Map
MFC's Organizational Chart	3 4	MS Institute for Forestry Inventory /Management
State Assessment of Forest Resources /Resource Strategy	4 5	Private Lands
Forest Resource Development	5 5	Forest Stewardship Program
Managing Public Lands	6 6	Sixteenth Section Lands
Forest Health	7 8	Fire Services
Communications	8 9	Aviation
Federal Excess Personal Property Program/ Fire Fighter Program	9 9	Volunteer Fire Assistance Program
Fire Law Enforcement	10 11	Forest Information & Public Outreach
Firewise Program	11 11	Public Outreach/ Conservation Education
Underserved Landowner Outreach Program	11 12	Urban/Community Forestry Program
Champion Tree Program	12 13	Business Support
Financial Services	13 13	Information Systems
Human Resources	13 13	Safety & Training
Revenue Report	14 15	Expense Report
Board of Commissioners	16	

Contact information for the district offices is located on the inside back cover.

*The Mississippi Forestry Commission provides equal employment opportunity and services to all individuals regardless of disability, race, age, religion, color, gender, creed, national origin or political affiliation.*

*This institution is an equal opportunity provider.*

## 2010 - A YEAR OF DEVELOPMENT



Charlie Morgan  
State Forester

The Mississippi Forestry Commission has been a leader in forest protection, management and sustainability of our state's forests for over 84 years. Year after year we provide expertise, experience, information and support to keep Mississippi's 19.79 million acres of forestland healthy, productive and profitable.

This past year can best be described as a year of development. One of these developments was the completion of the first ever statewide forest resource assessment and strategy. The publication, titled "Mississippi's Assessment of Forest Resources and Forest Resource Strategy", was created to satisfy a requirement of the 2008 Farm Bill. It will act as a general guideline for forest resource management for many years to come.

One of our challenges this past year has been continuing to stay at the forefront of forest technology, management and protection while maintaining tight budget constraints. We have performed our tasks operating on a planned 5 percent reduction in budget and have taken great strides to efficiently develop our everyday functions to meet our objectives while satisfying these constraints. This has led to the implementation of a robust forest management training program and development of a new forest management manual. Also, we experienced a wet and mild fire season in FY10 which aided in our cost savings and allowed us to focus our efforts on management.

Some of the highlights of 2010 include:

- Increased timber sale revenue of 16th section lands to over \$30 million
- Completed the Mississippi Assessment of Forest Resources and Forest Resource Strategy
- Assisted MDA in development of KiOR Bio-crude plant location to MS
- Participated in the Mississippi Conservation Summit with Secretary of State
- Completed management plans for all school trust lands
- Completed the statewide Forest Information Analysis (FIA) in conjunction with the USFS Southern Research Station
- Used new technology to map and calculate amount of damaged timber from the tornados that struck in the spring. This data helped secure federal support.

We appreciate our partners who provide support, collaboration and implementation on many of our programs and services. We work hard to maintain and develop our relationships with natural resource agencies, organizations and individuals. These relationships ensure the citizens of Mississippi receive the best assistance and service possible.

I would also like to thank our state leaders, commission, staff, partners and citizens for their continued support and assistance in making 2010 a success.

Please contact our office at any time. We look forward to serving you.

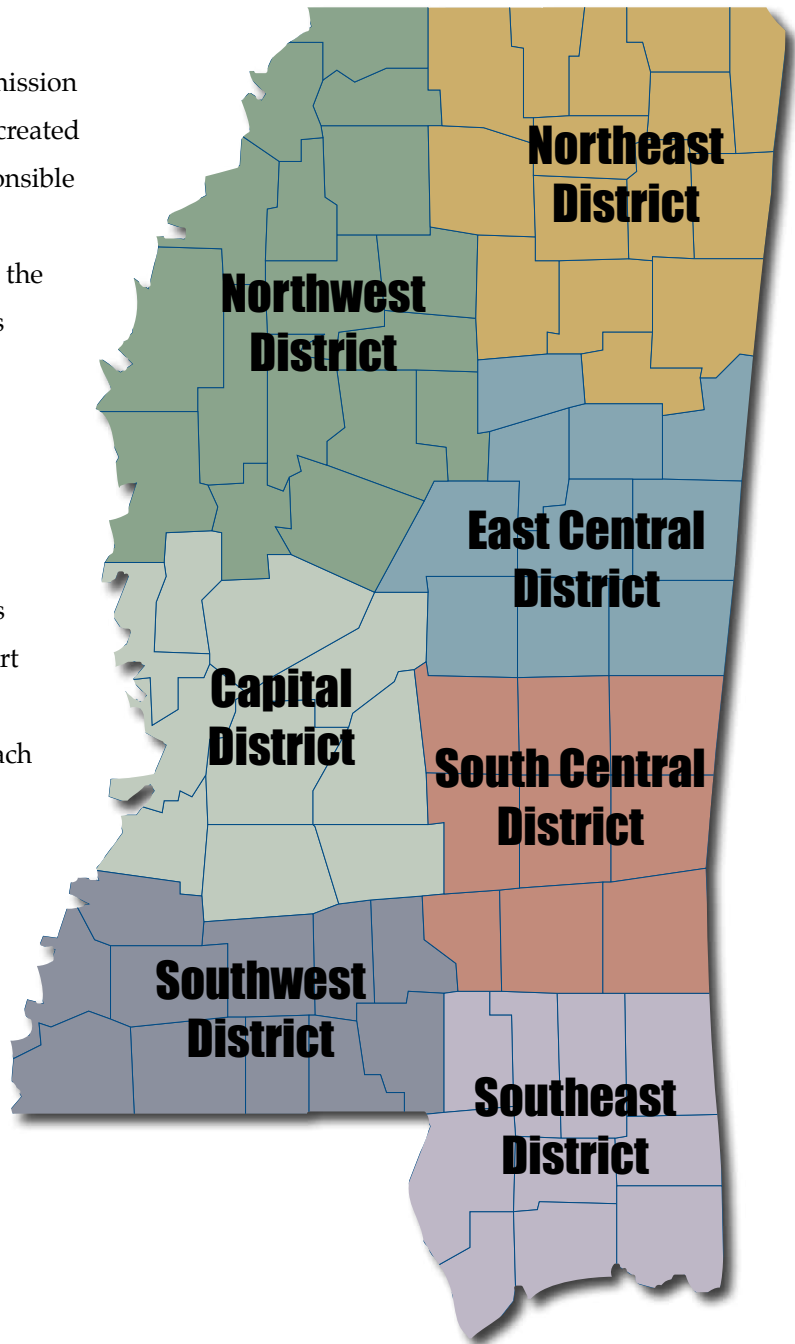
A handwritten signature in cursive script that reads "Charlie Morgan".

Charlie Morgan  
State Forester

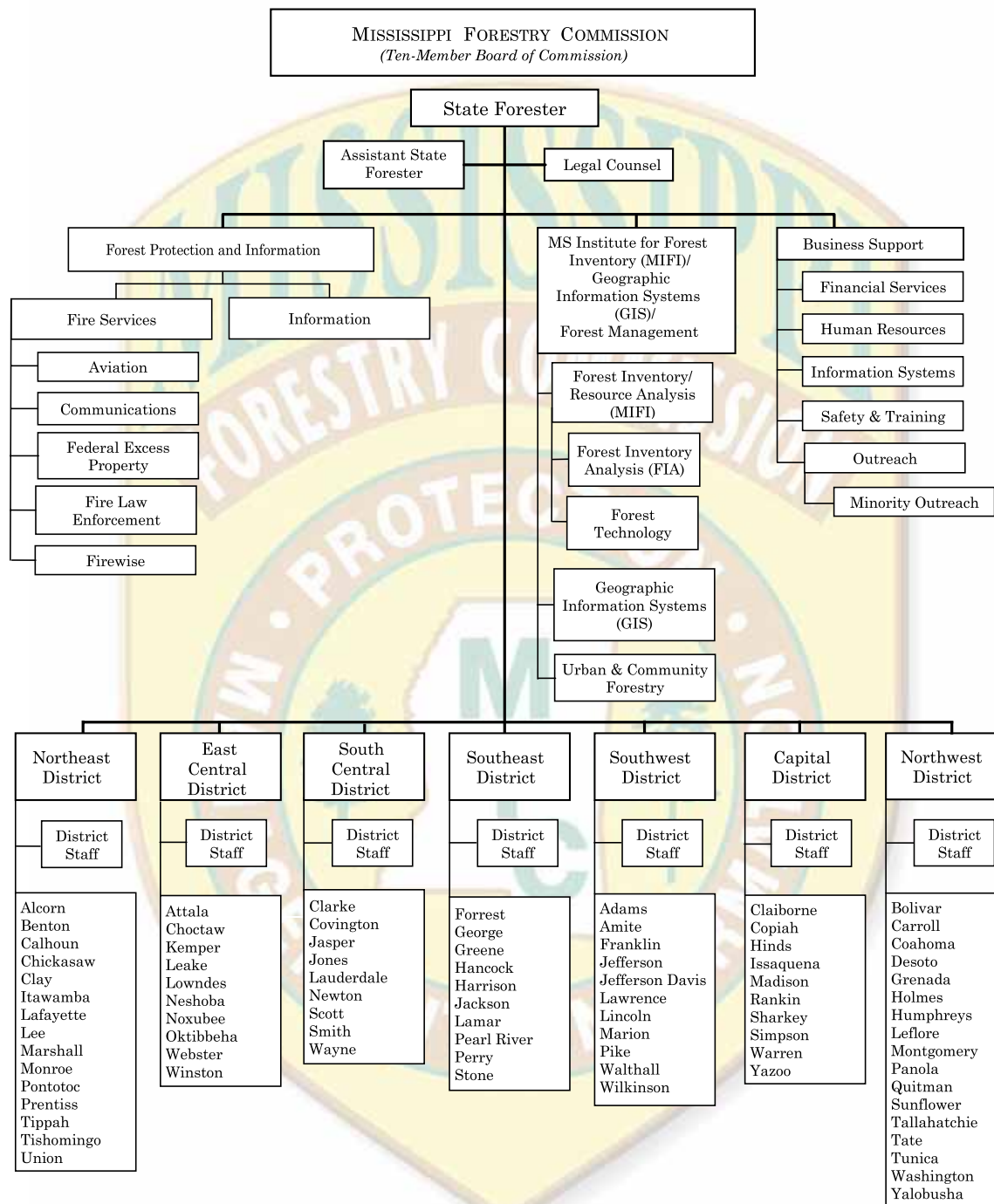


## MISSISSIPPI FORESTRY COMMISSION ADMINISTRATIVE DISTRICTS

The Mississippi Forestry Commission (MFC) is a public service agency created by the State Legislature and responsible for all facets of forest protection, management and information for the state of Mississippi. The agency is divided into two major program areas: Forest Protection and Information, and the Mississippi Institute for Forest Inventory / Forest Management. These areas and seven administrative districts are supported by Business Support and Legal Counsel. This annual report provides an overview of each program area and highlights our accomplishments for FY 2010 (July 1, 2009 to June 30, 2010).







## MS INSTITUTE FOR FOREST INVENTORY

*The Mississippi Institute for Forest Inventory/Forest Management provides direction and support to several program areas carried out on private and public lands.*

In 2006, the Mississippi Legislature passed a law that brought the Mississippi Institute of Forest Inventory (MIFI) under the oversight of the MFC. Both MIFI and MFC's Forest Management Division dealt with forest inventory. By consolidating these activities, the agency eliminated duplication of work in particular areas and also allowed each department to capitalize on the other's strengths to form a stronger organization.

The MFC's Resource Analysis program oversees the development, implementation and management of the agency's geographic information system. This is a statewide system that is utilized for information on fires, public/private lands and urban/community forestry programs.

In an effort to promote economic development of the state's forest resources, MIFI, in conjunction with the Mississippi Development Authority (MDA), provides forest resource information and maps for economic development. A statewide assessment of forest resources is maintained utilizing satellite imagery to estimate forest removals, regeneration and developmental stages of forest cover.

*In FY09, MIFI completed a baseline forest inventory for Mississippi. In FY10, MIFI used the information to respond to numerous requests for resource analyses for ethanol conversion and wood pellet facilities.*

## FOREST MANAGEMENT

The MFC is charged in Mississippi Code Section 49-19-3 to "promote sound forest management practices which maintain the integrity of the environment and provide for our state's future natural resource needs."

The MFC offers a variety of forest management services to private landowners and public forestlands of Mississippi, such as 16th Section Lands and other state agency properties.

## FY10 STATEWIDE ACCOMPLISHMENTS

### Private Lands Activities

Landowners Assisted	16,423
Forest Management Plans	1,110
Acres	95,355

### Public Land Activities

Timber Sale Receipts	\$30,460,625*
Number of Sales	305
Acres Regenerated	6,021
Boundary Line Maintenance (Miles)	373
Firebreak/Woods Road Maintenance (Miles)	496

### Forest Resource Development Program

Acres Regenerated or Improved	26,194
-------------------------------	--------

### Prescribed Burning

Private Lands (Acres)	12,889
Public Lands (Acres)	16,337

<b>Total</b>	<b>29,226</b>
--------------	---------------

\*Source: MFC's Public Lands Timber Sale report and FY10 Crew Assistance report. Receipts are from sales made on School Trust Lands and other public lands. Timber sale receipts consist of lump sum sale revenue, carry-over revenue from FY09, and actual thin sale revenue; does not include remaining pay-as-cut revenue estimated to be \$3.1 million, which will be reported next year as carry over from FY10. Note: 30 public land timber sales were rejected in FY10 due to low bids or no bids, which reflects poor market conditions, especially in the sawtimber market.

## STATE ASSESSMENT OF FOREST RESOURCES AND FOREST RESOURCE STRATEGY

In response to a requirement of the Food, Conservation and Energy Act of 2008 (the Farm Bill), the MFC completed a statewide forest resource assessment and a long-term statewide forest resource strategy titled "Mississippi's Assessment of Forest Resources and Forest Resource Strategy." This assessment and strategy will allow Mississippi to receive funds under the amended Cooperative Forestry Assistance Act. The assessment provides an analysis of forest conditions and trends in the state and delineates priority rural and urban forest landscape areas. The strategy provides general long-term plans for investing state, federal and other resources to effectively stimulate or leverage desired action and engage multiple partners. A copy of the State Assessment and Strategy can be found on our website at [www.mfc.ms.gov](http://www.mfc.ms.gov).



## PRIVATE LANDS

The MFC provides technical and financial assistance to private nonindustrial forest landowners (PNIFs) in Mississippi. More than 78 percent of Mississippi's timberland, 15.2 million acres, belongs to an estimated 350,000 PNIFs with parcels of 10 acres or greater. The MFC provides technical financial assistance to PNIFs through programs designed to enhance and protect natural resources.

## FOREST LEGACY PROGRAM



The Forest Legacy Program (FLP) was authorized by the 1990 Food, Agriculture, Conservation and Trade Act to identify and protect environmentally important, private forestlands threatened with conversion

to non-forest uses. FLP, a USDA Forest Service program in partnership with Mississippi, helps support with local efforts. A statewide Assessment of Need (AON) was completed this year as a first step to identifying the areas where important natural forest communities exist on private lands that are potentially threatened by conversion from urban and suburban growth or other threats. The AON is posted on the MFC's website at [www.mfc.ms.gov](http://www.mfc.ms.gov).

*On average, more than \$2 million is distributed each year to private forest landowners in Mississippi through the Forest Resource Development Program, which provides cost sharing for tree planting and forest improvements.*

## FOREST RESOURCE DEVELOPMENT

The Forest Resource Development Program (FRDP) was established in 1974 by the Mississippi Legislature for developing the state's forest economy. This program provides cost-share funding for tree planting and forest improvement practices for the purpose of long-term timber production. This program helps offset a landowner's expense by sharing the cost of implementing specific forestry practices designed to produce timber and enhance wildlife development. Cost-share payments cover 50 to 75 percent (depending on the practice) of the total cost of implementing one or more forestry practices, with a maximum limit set for each individual practice.

Eligible landowners can receive up to \$7,000 of FRDP assistance a year. In turn, a landowner agrees to protect the area receiving FRDP assistance from fire and grazing, and to properly manage the area for a minimum of ten years.

## FOREST STEWARDSHIP PROGRAM

The Forest Stewardship Program promotes natural resource planning on private, nonindustrial forestlands. Landowners not currently under forest management are encouraged to utilize stewardship management through the development and implementation of a Forest Stewardship Management Plan. These plans are based on sound management principles designed to restore and protect forest resources and water quality, and to improve fish and wildlife habitats.

The Forest Stewardship Program is funded by the USDA Forest Service. The program is carried out by the MFC through its Forest Stewardship Committee. Technical assistance is provided by local, federal, state and private natural resource agencies and organizations.

The State Plan for the Mississippi Forest Stewardship Program provides the framework for conducting the program. The plan also contains stewardship background, guidelines and forms for landowners and resource professionals. Educational DVDs were developed by the Public Outreach Department this year to show Mississippi's landowners the benefits of the stewardship program and multiple-use management on their timberlands.



## MANAGING PUBLIC LANDS

The MFC provides management assistance to boards, agencies and other entities having jurisdiction over approximately 480,000 acres of non-federal public forestlands in Mississippi. The MFC is responsible for managing two state forests, Kurtz and Camden; managing School Trust Lands; and rendering assistance to the various agencies, boards, departments and other entities having jurisdiction over state and other public lands in Mississippi.

The Mississippi Forestry Commission is a nationally recognized leader in forest management technology. Several unique software products have been created or used specifically for forestry management through hurricane recovery federal funding, at no cost to the state:

- A Geographical Information System (GIS) application called Spatial Information Management System (SIMSMap)
- A computer-driven forest management plan developer called PlanWriter
- A new Plot Allocator to more efficiently collect data and meet statistical objectives faster
- Use of handheld computers that allows for monitoring the sampling error during the inventory
- Use of trail/game cameras to monitor the number of loads leaving logging site for accountability
- A harvest scheduler called Woodstock, which takes data from SIMSMap and creates a statewide harvest plan to carry out management activities from one year to the next



*"Our goal is to maximize School Trust Land timber sale revenue by applying a more intensive timber management process. This process yielded a 45 percent increase in revenue over the previous year. These funds directly benefit the local school districts and the children attending those schools."*

*Charlie Morgan, State Forester*



*In FY10, the revenue from timber sales on non-federal public lands, including School Trust Lands, totaled \$30.46 million.*

### Sixteenth Section Lands

The Forestry Commission is charged by state law to manage forested School Trust Lands, commonly referred to as Sixteenth Section Lands located in 67 counties. In addition to timber production, management considerations also include wildlife, soil and water quality, aesthetics and other appropriate benefits of forestlands. The revenue from timber sales on School Trust Lands and other public lands in FY10 totaled \$30.46 million.

The MFC has converted all its management data into a GIS system to prepare the first comprehensive Sixteenth Section Land Assessment. This assessment, together with more intensive forest management practices, has allowed us to meet our mark of timber-generated revenues of \$30 million per year.

Anticipating future needs, the MFC ensures necessary steps are taken so that all School Trust Lands are managed sustainably, and best management practices are used on all lands. FY10 highlights include presenting customized Sixteenth Section Forest Management Plans to all school districts with School Trust Funds.



## FOREST HEALTH

The MFC provides forest pest detection, evaluation and control recommendations for all private and state-owned timberlands as well as urban areas. The agency conducts at least one statewide aerial survey each year and additional surveys when needed. Insect and disease spots are ground checked to determine the exact cause and extent of damage.

Timber damage from forest insects and disease has been very light for FY10 compared to previous years. However, the Southern Pine Beetle kills more pine timber in the South than any other forest insect. As a result, the MFC has partnered with the MSU Extension Service to carry out a Southern Pine Beetle Landowner Incentive Program designed to provide a financial incentive to landowners who apply Southern Pine Beetle management practices.

The second leading insect to kill pine timber in the South is the *Ips* engraver beetle. Drought conditions and stress from severe winds can cause the *Ips* engraver beetle populations to increase dramatically.



Southern  
Pine Beetle

In FY08, the MFC launched a plan to mitigate the damage caused by invasive, non-native plant species to the state's forestland. The Exotic Invasive Species Plan addresses the detection, identification, information, control and abatement of six species of concern that are either impacting or have the greatest potential to impact the forest resource of Mississippi. These species are cogongrass (*Imperata cylindrica*); kudzu (*Pueraria montana*); Chinese tallowtree (*Sapium sebifera*); Chinese/European privet (*Ligustrum sinense*); Japanese/glossy privet (*Ligustrum japonicum*); and Japanese climbing fern (*Lygodium japonicum*). The plan also addresses the need to develop partnerships with other agencies and organizations to achieve common goals in regard to invasive species.

In FY09, the MFC and Mississippi State University received American Recovery and Reinvestment Act (ARRA) grants. These grants provide Mississippi landowners with financial and technical assistance for combating invasive plants, particularly Cogongrass (MFC); reducing the number of wildfires by removing fuel buildup through hazard mitigation (MFC); and treating pine timber stands to mitigate the high risk of infestations by the Southern Pine Beetle (MSU).

## ARRA GRANT PROGRESS

### Cogongrass

Applications from Landowners	525
Applications/Landowners Inspected	304
Total Infested Spots Treated	1,452
Total Acres Treated	219,763
Average Size of Infestation (Acres)	0.151
Gallons of Herbicide Applied	11,033

Native to Southeast Asia, Cogongrass is believed to have entered the US in the early 1900s as packing material. Cogongrass is an aggressive invasive species that chokes out native vegetation, burns at extremely hot temperatures and is devastating to the native ecosystem.

Today, infested areas of Cogongrass are found on more than one million acres throughout the southeastern United States. In Mississippi, Cogongrass has been identified in 62 counties, with significant infestations in 28 counties. The ARRA grant will assist the MFC with public education and Cogongrass control measures in select counties.



Cogongrass  
Education Poster



"Don't Move Firewood"  
Education Poster

pests are often transported and introduced to new areas through the movement of firewood across state and county lines.

The MFC also started a new campaign in FY10. The "Don't Move Firewood" program was created to help stop the spread of invasive pests, such as the Emerald Ash Borer, the Redbay Ambrosia Beetle, the Gypsy Moth and the Sirex Woodwasp, through the movement of firewood. These



Redbay Ambrosia Beetle

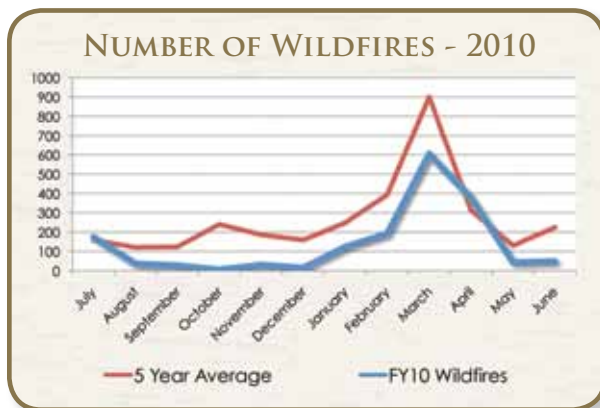
## FIRE SERVICES

*The Fire Services Division includes four departments: Aviation, Communications, Federal Excess Personal Property Program and Fire Law Enforcement.*

In 1926, the Mississippi Legislature mandated that the MFC protect the state's forestland from wildfire. At that time, wildfires were consuming more than five million acres of timberland each year.

The MFC provides assistance to Mississippi and other states with all weather-related events such as hurricanes, ice storms and large scale wildfires, and also coordinates the management of MFC's firefighting resources within the state.

The MFC collects all data to make sound decisions and long-range plans to ensure the adequate allocation of resources needed for pre-suppression and suppression of wildfires. The MFC manages 12 remote area weather stations (RAWS) strategically located across the state as part of a national grid. These weather stations provide localized forestry and fire-related weather forecasts.



The MFC provides the following weather and fire information on our website:

- Fire Danger Rating (USDA Forest Service Wildland Fire Assessment System)
- Current Weather
- Forecast
- Fire Danger Rating Color Code
- Keach Bryam Drought Index
- MFC Daily Fire Situation Report
- Southern Area Coordination Center (SACC)
- National Weather Service Enhanced Radar Image Loop for the United States
- NWS Enhanced Radar Image Loop for Lower Mississippi Valley Sector
- NWS Fire Weather Report



*Remote Area Weather Station (RAWS)*

While great strides in wildfire prevention, detection and suppression have been made, wildfires still continue to plague the state. There are approximately 3,200 wildfires each year in Mississippi burning more than 55,000 acres. Due to excessive rainfall early in the year, occurrences and acres burned were well below normal for FY10.

In an effort to reduce the number of carelessness-caused wildfires, burn bans are authorized by the County Boards of Supervisors and approved by the MFC. Burn ban notifications are listed on the MFC's website at [www.mfc.ms.gov](http://www.mfc.ms.gov).

### Communications

An essential element of the agency's ability to deploy firefighting resources and maintain situational awareness of wildfire activity is dependable radio communications. The Communications Department is responsible for the maintenance and upgrades to the MFC's communication network which spans across the state. Components of the network include mobile radios in the agency's fleet of vehicles, lightweight hand-held radios for field personnel and the communication network of radio repeater sites, which provide statewide communication from dispatch centers to field personnel.

In FY10, MFC completed testing the Mississippi Wireless Integrated Network (MSWIN) system as required by the Mississippi Wireless Communications Committee (WCC). The MSWIN system will provide interoperable emergency radio communication across the state with all levels of government, agencies and organizations. This system is a result of Hurricane Katrina, when the need for a more coordinated response during times of crisis was identified.



*In FY10, MFC suppressed 1,672 wildfires, which burned 19,113 acres. The average wildfire size for FY10 was 11.4 acres.*

*In FY10, the Mississippi Forestry Commission awarded 80 grants totaling \$250,670 to volunteer fire departments.*

### **Aviation**

Wildfire detection is provided by airplane surveillance together with the public's reporting of wildfires using toll-free numbers provided by the MFC. Fire suppression crews are dispatched from a central dispatching center located at a district office. On large fires, the airplanes survey the area, providing ground personnel with real-time information of the fire's behavior. The MFC's Aviation Department also provides service and support to the Forest Health program and other forest management programs.

After two tornados cut through the state in the spring of this year, the aviation fleet was used to survey and estimate the amount of damage sustained to forestlands. Using state-of-the-art technology, the tornados' path and width were mapped, and MIFI data were used to calculate a volume estimate of damaged timber.

### **Federal Excess Personal Property Program/ Fire Fighter Program**

Providing assistance to the state's volunteer fire departments has had a significant impact on reducing the number of wildfires in Mississippi. This assistance is available through the Federal Excess Personal Property (FEPP) Program and the Fire Fighter Program (FFP), administered by the MFC through an agreement with the USDA Forest Service.

Since 1956, FEPP has allowed the Forest Service to loan property to state forestry agencies for the purpose of wildland and rural firefighting. The Forest Service is authorized and encouraged by the Secretary of Agriculture to loan FEPP to states; and through the states, to local fire forces.

The MFC delivered the first FFP equipment in FY10. The use of the equipment is for wildland / rural firefighting and emergency response. Unlike FEPP, FFP equipment ownership is transferred to the receiving organization.

Approximately 70 percent of the property involved in the FEPP program in Mississippi is sub-loaned to local fire departments. Approximately 90 percent of all equipment acquired through FFP is transferred to local fire departments. In FY10, MFC's FEPP/FFP issued 105 vehicles with an estimated value or acquisition cost of \$4.53 million.



### **Volunteer Fire Assistance Program**

Formerly known as the Rural Community Fire Protection Program, the Volunteer Fire Assistance Program (VFA) provides grants to eligible rural volunteer fire departments (VFDs) for the purchase of firefighting and personal protection equipment needed for fighting wildfires. The Mississippi Forestry Commission administers this program through an agreement with the U.S. Forest Service. In FY10, the Mississippi Forestry Commission awarded 80 grants totaling \$250,670 to volunteer fire departments. These grants were used to purchase wildland firefighting ready-kits containing protective clothing and gear for 800 volunteer firefighters.



*FEPP Vehicle  
Restoration*



## FIRE LAW ENFORCEMENT

The MFC and the Mississippi judicial system have the responsibility to pursue the arrest and conviction of woods arsonists, individuals who show little or no concern for Mississippi's citizens and forest resources. They are also charged with pursuing retribution in instances where negligence has caused wildfires that result in the expenditure of state and/or federal funds.

Woods arson has historically been the leading cause of wildfires in Mississippi. In 1993, in an attempt to abate the problem, the Mississippi Legislature established fire law enforcement positions within the MFC. The duties and authority of these officers are limited to woods arson. These officers may "... issue citations for any violation of those laws designed for the protection from fire recklessly or with gross negligence being communicated on the lands of another." (Section 49-19-3)

During FY10, the MFC investigated felony woods arson cases resulting in the arrests of woods arsonists. Citations, under the woods arson statute, were issued following investigations of misdemeanor cases.



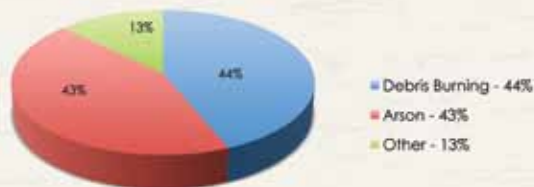
*Setting Backfire*

MFC investigators have investigated 31 suppression cases in which the responsible parties were issued an invoice for the incurred costs. The total amount involved in all pending civil and criminal cases was \$18,703. This included suppressions, misdemeanor and felony restitutions. The total number of all investigated cases, both criminal and civil, was more than 150 cases.

### FY10 WILDFIRES BY CAUSE

Cause	# Wildfires	Acres Burned
Debris Burning	731	6,612
Incendiary (Arson)	728	11,005
Miscellaneous	108	503
Re-ignition	38	427
Equipment Use	31	254
Smoking	14	34
Lightning	10	147
Children	9	125
Railroad	2	3
Campfire	1	3
<b>TOTAL</b>	<b>1,672</b>	<b>19,113</b>

### FY10 WILDFIRES BY CAUSE



The MFC investigators also initiated and assisted on a timber theft case that was led by the Department of Agriculture. This case is ongoing and has now produced three different criminal/felony indictments (timber theft) on the responsible party. These indictments stem from three different timber sales within school lands where timber theft was occurring. There was an excess of \$375,000 of timber stolen from these tracts. Other charges may possibly follow in this particular investigation.

Historically, accidental fires, such as escaped control burns and debris burns, are as costly as those set on purpose. Accidental fires, the second most common cause of wildfires in Mississippi, require the same types of actions and resources as arson fires.







*Smokey Bear with children at Trustmark Park*

## FOREST INFORMATION AND PUBLIC OUTREACH

*The Information/Outreach Division has three departments: Forest Information, Public Outreach and Urban/Community Forestry.*

The Forest Information and Public Outreach Division supports all the MFC program areas by providing information, promotional activities and publicity. The division utilizes mass media outlets (e.g., radio, television and print) to release forestry and agency information to the public at large. Multiple delivery methods are used in order to reach the public in the most effective manner.

### Forest Information

The Forest Information Department provides support to all the MFC programs through the development of displays, exhibits, brochures and other informational material. The department is the point of contact for media relations and is responsible for maintaining the MFC website, [www.mfc.ms.gov](http://www.mfc.ms.gov), and producing the agency's newsletter, annual report and *MFC News* magazine.

### MFC OUTREACH PROGRAM

Adult & Youth Programs	1,190
Participants	88,223*

\* Numbers do not include participants from MS State Fair, MS Wildlife Extravaganza or MS Garden and Patio Show

## Public Outreach/Conservation Education

The Public Outreach/Conservation Education Department maintains active outreach programs designed to educate youths and adults about forestry and related issues, in addition to the agency's mission and services. Local outreach activities such as civic club presentations, forestry field days and visits to school groups are carried out across the state to reach individuals at the community level. In FY10, outreach activities reached more than 12,000 youths and 75,000 adults. These numbers do not include the people visiting MFC displays at the State Fair, Mississippi Wildlife Extravaganza or Garden and Patio Show. The Public Outreach Department oversees two programs: the Firewise Program and the Underserved Landowner Outreach Program.

Firewise is an educational program for homeowners and community leaders. This program is for anyone living in, or connected to, the wildland / urban interface. Information is available on how to design, construct, landscape and maintain a home or community to withstand a wildfire, without the aid of firefighting resources on scene.



The Underserved Landowner Outreach Program is a joint project between the MFC, Alcorn State University and the USDA Forest Service. The program offers assistance to underserved landowners in Mississippi. This program has three primary goals:

- To provide outreach support and technical assistance to underserved landowners;
- To encourage young people to seek careers in forestry; and
- To work with Alcorn State University to develop and/or enhance projects of mutual forestry interest.

The Public Outreach Department also developed the Mississippi Forest Stewardship DVD, mentioned earlier in the Forest Stewardship section of this publication. The MFC is in the process of developing two DVDs that will educate landowners and promote water quality and Best Management Practices. Look for these DVDs in the upcoming year.

## Urban/Community Forestry

The MFC provides assistance and training to urban areas in developing community forestry programs. This includes support to counties and municipalities on developing tree ordinances, inventorying street trees and writing urban forest management plans. The MFC also provides technical advice to builders on tree preservation during construction and helps homeowners with advice on insects, diseases and other tree care problems.

*In FY10, the MFC's Urban/Community Forestry Program provided 12 financial assistance grants totaling \$205,406 to state and local governments, non-profit groups and educational institutions.*

The Urban and Community Forestry Challenge Grant Program, funded through the USDA Forest Service, provides funding for administration, demonstration projects and educational programs.

The Transportation Enhancement Tree Planting Program provides matching grants to state and local governments for the purpose of planting trees to enhance transportation systems. Qualifying projects must be in close proximity to a public transportation corridor or facility. This program is administered by the MFC with financial support from the Mississippi Department of Transportation. In FY10, MFC awarded 19 transportation grants for a total amount of \$172,708.

Providing leadership, financial aid and technical support to the Mississippi Urban Forest Council are major functions of the MFC's urban forestry effort. The agency worked jointly with this volunteer organization to conduct a statewide conference and carry out a statewide awards program.

*The MFC responded to 150 requests from cities, communities and homeowners for urban forestry assistance during FY10.*



2010 Arbor Day Poster Contest Winner

## CHAMPION TREE PROGRAM

*Champion Trees of Mississippi*, the official publication of the Mississippi Champion Tree Program, records the largest trees of various species growing in the state. Of the 175 trees registered as Mississippi Champions, nine are also national champions and five are national co-champions.

### TREE CITY USA AWARDS

Tree City USA is a national recognition program that provides a basis for model community forestry practices.

The program is administered in Mississippi by the MFC.

In the 2009 calendar year, 35 cities were awarded

Tree City USA status:

Bay St. Louis	Horn Lake	Oxford
Biloxi	Keesler AFB	Pass Christian
Cleveland	Laurel	Pearl
Columbus	Leakesville	Ridgeland
Columbus AFB	Long Beach	Sandersville
Como	Lucedale	Senatobia
Ellisville	Meridian	Southaven
Greenwood	Mount Bayou	Tunica
Greenville	New Albany	Tupelo
Grenada	Newton	Wiggins
Gulfport	Ocean Springs	Winona
Hattiesburg	Olive Branch	



## BUSINESS SUPPORT

*Business Support consists of four service-oriented departments: Financial Services, Information Systems, Human Resources and Safety/Training.*

### Financial Services

Financial records of the MFC are maintained in accordance with accepted accounting procedures and conform to state and federal law as defined by the Comptroller, Examiners of Public Accounts and the USDA Forest Service. The MFC FY10 Income and Expense Statement and financial highlights can be found on pages 14 & 15.

A component of Financial Services, the Purchasing Department is responsible for ensuring that the MFC follows all state purchasing laws and requirements. Providing purchasing-related assistance to the agency's administrative districts and program areas is an essential function of the department.

### Information Systems

During FY10, Information Systems provided maintenance and technical support to the MFC's network of computers. Improvements and updates to the MFC's website were made throughout the year. The website is accessible by the public and employees at [www.mfc.ms.gov](http://www.mfc.ms.gov). During periods of high fire danger, the website is used to provide public service information, including daily fire reports and news releases. The "Intranet" section of the website has become very useful in providing updated forms and documents to employees. The website is managed as a joint project between Information Systems and Information/Outreach.



*Firefighter Training*



*Firefighter Training*

### Human Resources

The MFC's Human Resources Department strives to maintain a total personnel administration program for the entire agency. In FY10, the MFC had 490 full-time and six (6) part-time authorized employee positions. Authorized positions for FY11 include 474 full-time and three (3) part-time positions.

#### MFC EMPLOYEES\*

Position	FY10	FY11
Full-Time	490	474
Part-Time	6	3
<b>TOTAL</b>	<b>496</b>	<b>477</b>

*\* Does not include federally-funded, time-limited positions.*

### Safety & Training

The Safety and Training Program stresses the importance of safety in all programs of the MFC. Providing tools, techniques and training necessary for employees to work safely and effectively is essential to enhancing job skills and fostering personal development and growth. Continuing education and training opportunities were available for each employee in FY10.

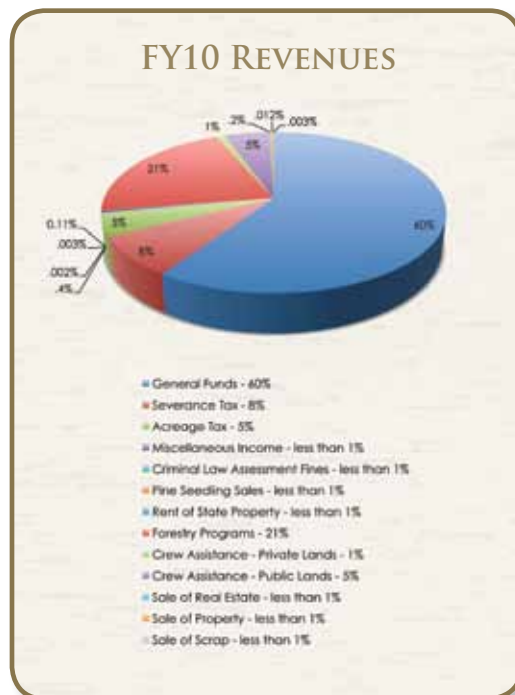
## FY10 MISSISSIPPI FORESTRY COMMISSION - REVENUE

INCOME	6/30/2010	6/30/2009	Increase (Decrease)
48000 General Funds	\$17,790,063	\$18,648,649	(\$858,586)
40260 Severance Tax	2,407,250	2,412,904	(5,654)
40440 Acreage Tax	1,379,507	1,371,878	7,629
41460 Miscellaneous Income	118,975	328,461	(209,486)
42310 Criminal Law Assessment Fines	690	2,121	(1,431)
43011 Pine Seedling Sales	819	60,289	(59,470)
43100 Rent of State Property	34,122	35,953	(1,831)
44080 Forestry Programs	6,279,166	5,491,558	787,608
45010 Crew Assistance - Private Lands	287,594	542,644	(255,050)
45020 Crew Assistance - Public Lands	1,504,826	1,348,998	155,828
46000 Sale of Real Estate	55,500	--	55,500
46010 Sale of Property	85,212	1,009,715	(924,503)
46020 Sale of Scrap	956	3,669	(2,713)
<b>Net Revenue</b>	<b>\$29,944,679</b>	<b>\$31,256,839</b>	<b>(\$1,312,160)</b>

## ACCOUNTS RECEIVABLE

Billable Services	127,640	155,812
Federal Reimbursements	--	452,136
<b>Net A/R</b>	<b>\$127,640</b>	<b>\$607,948</b>

<b>TOTAL REVENUE</b>	<b>\$30,072,319</b>	<b>\$31,864,787</b>
----------------------	---------------------	---------------------





# FY10 MISSISSIPPI FORESTRY COMMISSION - EXPENSE

EXPENSE	6/30/2010	6/30/2009	Increase (Decrease)
Salaries	\$19,546,578	\$20,072,660	(\$526,082)
Travel	91,125	112,203	(21,078)
Contractual	2,426,303	2,668,764	(242,461)
Electricity	166,169		
Services Charges to Data Center	147,262		
Software Acquisition	212,782		
Fees & Services	385,736		
Other Contractual Items	1,514,354		
Encumbrances	29,030	315,886	(286,856)
Commodities	2,241,099	2,753,155	(512,056)
Uniforms	197,667		
Fuels - Gasoline	533,372		
Fuels - Diesel	327,373		
Supplies and Materials	253,591		
Other Commodities	929,096		
Encumbrances	3,499	78,355	(74,856)
Capital Outlay <i>other than equipment</i>	99,201	62,575	36,626
Encumbrances	--	99,201	(99,201)
Equipment	1,449,644	597,060	852,584
Encumbrances	--	16,725	(16,725)
Vehicles	163,286	1,740,573	(1,577,287)
Encumbrances	--	84,823	(84,823)
Wireless Communication Devices	725	890	-
Encumbrances	--	50	
Subsidies, Loans, and Grants	2,788,991	3,050,719	(261,728)
Encumbrances	--	--	--
<b>TOTAL EXPENSE</b>	<b>\$28,839,480</b>	<b>\$31,653,639</b>	<b>(\$2,813,944)</b>
<b>NET</b>	<b>\$1,232,838</b>	<b>\$211,148</b>	

Total Encumbrances thru June 2010 (*cash not expended, only authority reserved*): \$32,530



MFC Operators

## FY10 BOARD OF COMMISSIONERS

Robert E. "Bob" Cox, *Chairman*

1732 Douglastown Road

Maben, MS 39750

Fax Number: (662) 324-3183

Home Phone: (662) 324-0194

Cell Phone: (901) 488-3795

Email: bob.cox@tembec.com

\*Term expires: June 30, 2012

Richard Thoms

105 N. Lane Street

Newton, MS 39345

Office Phone: (601) 683-2572

Fax Number: (601) 683-2573

Home Phone: (601) 683-3126

Cell Phone: (601) 209-6830

Email: rthoms@rtllc.com

\*Term expires: ended March 2010

Art Waymire, *Vice-Chairman*

6181 Hernando Road

Byhalia, MS 38611

Home Phone: (662) 838-8289

Cell Phone: (901) 488-3290

Email: foxden14@aol.com

\*Term expires: June 30, 2010

Dr. George Hopper

Mississippi State University

P.O. Box 9680

Mississippi State, MS 39762-9680

Office Phone: (662) 325-2953

Fax Number: (662) 325-0015

Email: ghopper@cfr.msstate.edu

\*Non-expiring term

Danny Dilworth

275 County Road 514

Rienzi, MS 38865

Home Phone: (662) 287-3623

Email: sueann@hughes.net

\*Term expires: June 30, 2013

Larry Homan

P.O. Box 39

Fulton, MS 38843

Office Phone: (662) 862-2125

Fax Number: (662) 862-4900

Home Phone: (662) 862-2208

Cell Phone: (662) 891-2208

Email: tristate@intop.net

\*Term expires: June 30, 2012

Glenn Sowell

210 Huntview

Brandon, MS 39042

Office Phone: (601) 683-2018

Home Phone: (601) 825-5027

Email: glen.sowell@farmcreditbank.com

\*Term expires: June 30, 2012

Charlie Donald

P.O. Box 820185

Vicksburg, MS 39182

Office Phone: (601) 473-4012

Fax Number: (601) 473-5562

Cell Phone: (601) 668-8027

Email: charlie@donalddtimber.com

\*Term expires: ended March 2010

James Cummins, *MIFI Board Member*

P.O. Box 10

Stoneville, MS 38776

Office Phone: (662) 686-3375

Fax Number: (662) 666-4780

Home Phone: (662) 686-4592

Cell Phone: (662) 820-5703

Email: jcummins@wildlifemiss.org

\*Non-expiring term

\*Members, by statute, may serve until they are replaced after their expiration date.



## MFC ADMINISTRATIVE DISTRICT OFFICES

### Mississippi Forestry Commission

*Charlie Morgan, State Forester*

660 North Street, Suite 300

Jackson, Mississippi 39202

Phone: (601) 359-1386 • Fax: (601) 359-1349

#### Northeast District

*Brendix Glasgow, District Forester*

1711 McCullough Boulevard

P.O. Box 703 • Tupelo, MS 38802

Phone: (662) 842-5312 • Fax: (662) 680-9999

#### South Central District

*Jack White, District Forester*

2705 Highway 15 South

P.O. Box 348 • Bay Springs, MS 39422

Phone: (601) 764-2711 • Alt. Phone: (601) 764-3061

Fax: (601) 764-3037

#### Northwest District

*Brant Godbold, District Forester*

1801 Highway 51 South • Grenada, MS 38901

Phone: (662) 226-3321 • Fax: (662) 226-0170

#### Southeast District

*Mark Hamilton, District Forester*

1528 Azalea Drive

P.O. Box 430 • Wiggins, MS 39577

Phone: (601) 928-5261 • Fax: (601) 928-3174

#### Capital District

*Richard McInnis, District Forester*

3139 Highway 468 • Pearl, MS 39208

Phone: (601) 420-6018 • Fax: (601) 420-6027

#### Southwest District

*Randy Chapin, District Forester*

515 County Farm Lane Northeast

P.O. Box 749 • Brookhaven, MS 39602-0749

Phone: (601) 833-6621 • Alt. Phone: (601) 833-2598

Fax: (601) 835-0188

#### East Central District

*Bruce Frasier, District Forester*

14941 Highway 16 West

P.O. Box 429 • Philadelphia, MS 39350

Phone: (601) 656-1381 • Fax: (601) 656-9247

*For a complete list of all offices & employees,  
please visit our website at [www.mfc.ms.gov](http://www.mfc.ms.gov).*



660 North Street, Suite 300  
Jackson, Mississippi 39202  
*[www.mfc.ms.gov](http://www.mfc.ms.gov)*